

**NB. This chart is from the
Resene historical file.
Please refer to current
Resene colour charts
for the latest colour options**

Resene

Roof Paint Systems



Resene

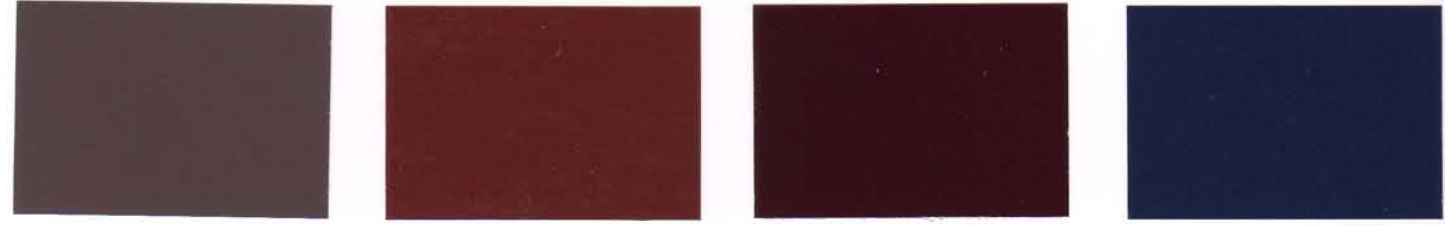
the paint the professionals use

Available in 10 litre pails
CC Available in Cool Colour

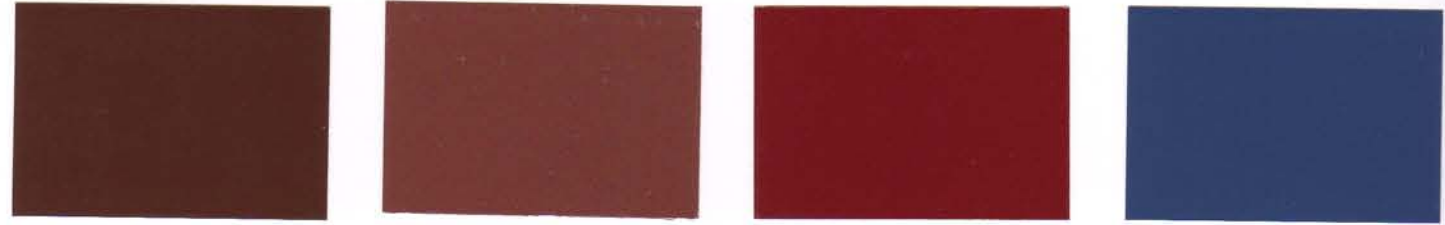
Resene Hi-Glo



acrylic roof paint



Felix 1.5BO27 Scoria * 1RO36 Rustic Red * 1RO73 Stratos 1B60



Indian Tan * CC 1.5BO73 Metallic Copper * 10HK12 Venetian Red 1BR49 Gulf Blue 2B60



Western Red 1BR50



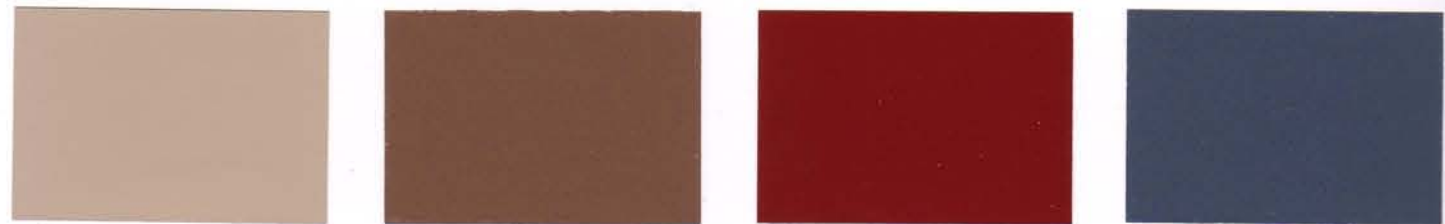
Explorer * 3.5B94



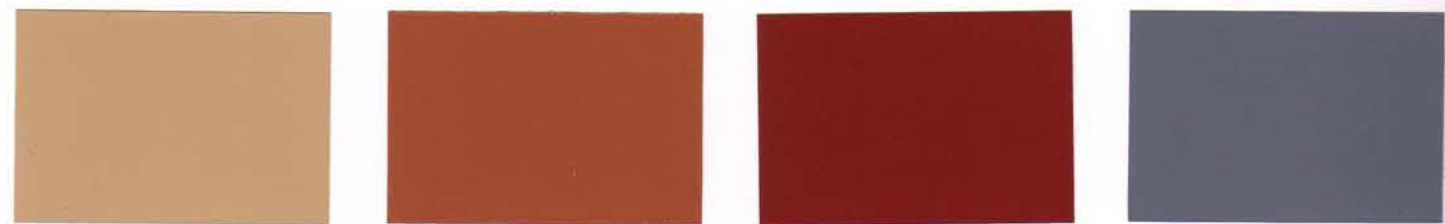
Botanic * 1.5GO81



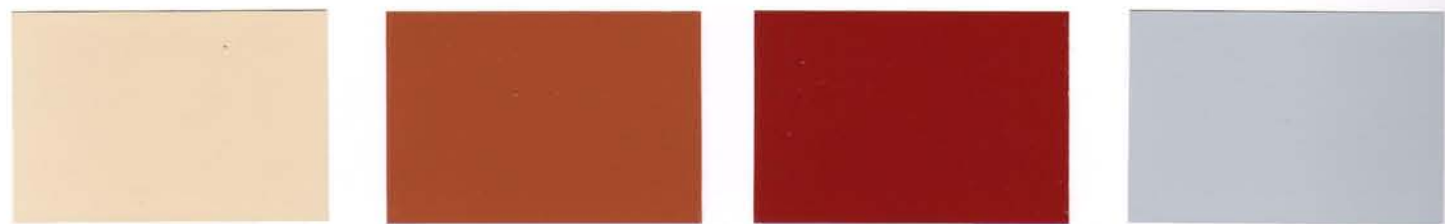
Rattlesnake * 10HJ03



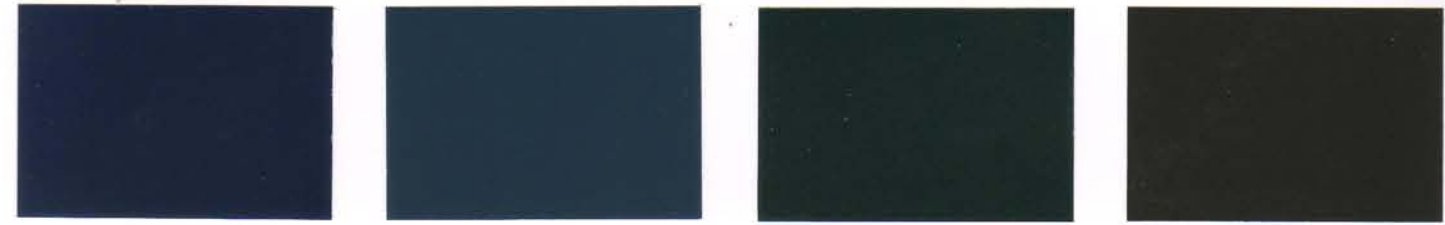
Desert Sand 6BO76 Old Copper * 15HK16 Red Oxide * 1RO43 Blue Zodiac * 14HK4.5



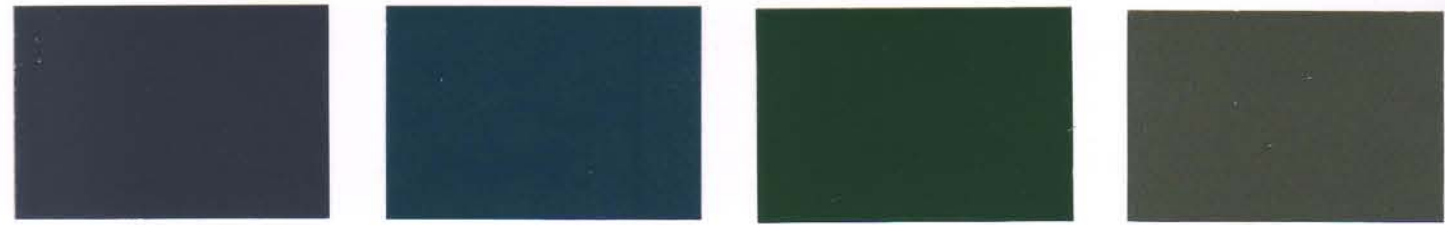
Barley Corn 4.5YO24 Twizel * 3RO16 Pioneer Red * 1RO42 Maltese * 3.5GR62



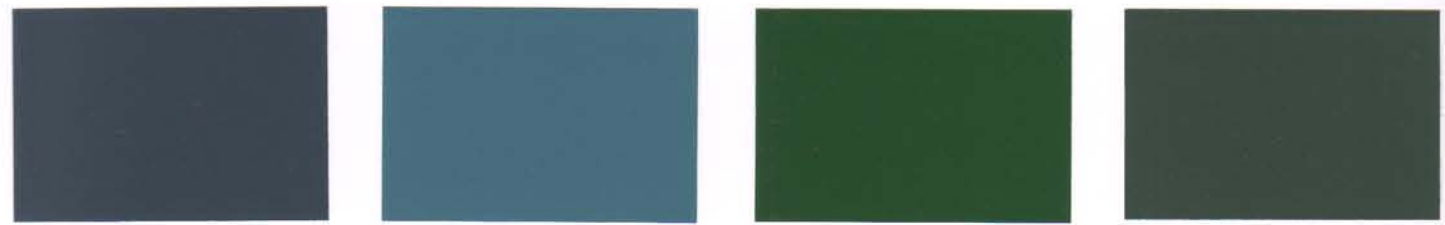
Smooth Cream * 5.5YO77 Alert Tan * 2YO62 Heatwave 1RO38 Forecast * 6B85



Tornado 1B67 Coast * 2B75 Racing Green CC 1GO51 Karaka * CC 1GO16



High Tide * 1B82 Blue Whale 1B48 Palm Green * 1GO59 Trainspotter * 10HJ05



New Denim Blue * 1B90 Undercurrent * 3.5B54 Permanent Green * 1GO57 Jurassic * 1.5GO90



Latitude * 4GR75



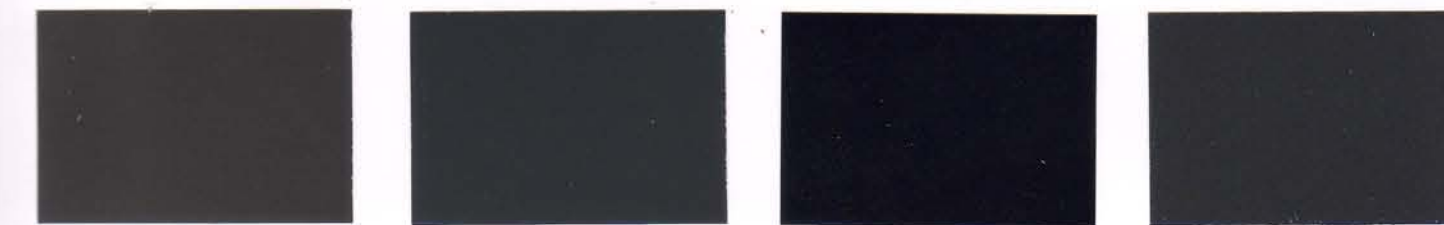
Cloud Burst * 1.5B88



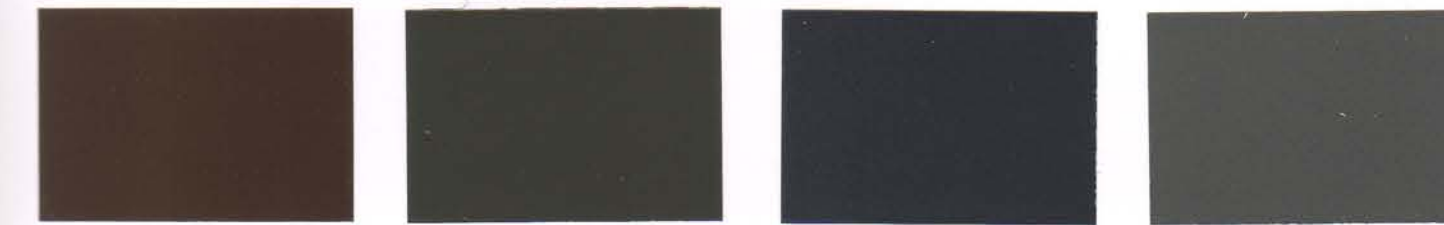
Seaweed * 1GO29



Paddock 5GO45



Ironsand * CC 1.5GR85 Grey Friars * CC 1GR16 All Black CC 1GR80 Bright Charcoal * 10HJ01



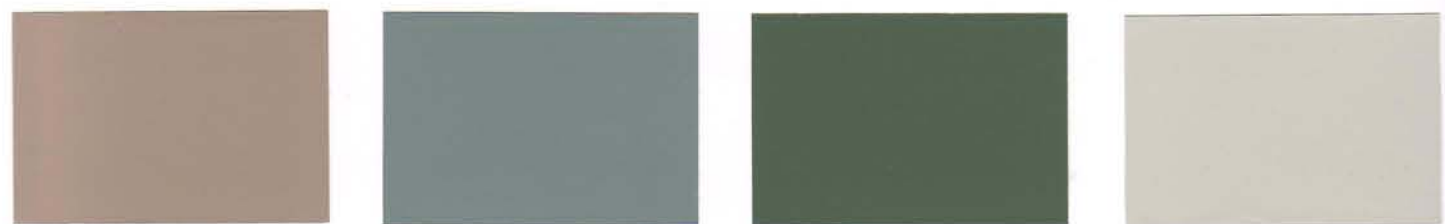
Lignite * CC 1BO18 Squall * CC 1GR76 Gumboot * CC 1GR51 Cathedral * 10HJ02



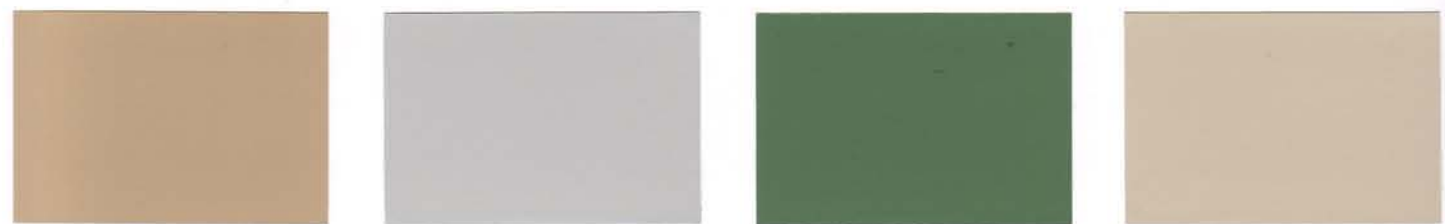
Metallic Bronze * 10HL10 Heavy Metal * 13HJ10 Vulcan * 11HK3.5 Steel Grey * CC 2GR51



Latitude * 4GR75 Cloud Burst * 1.5B88 Seaweed * 1GO29 Paddock 5GO45



Outback 5BO79 Sirocco 4GR73 Rivergum * 3GO51 Bone White * 7GR02



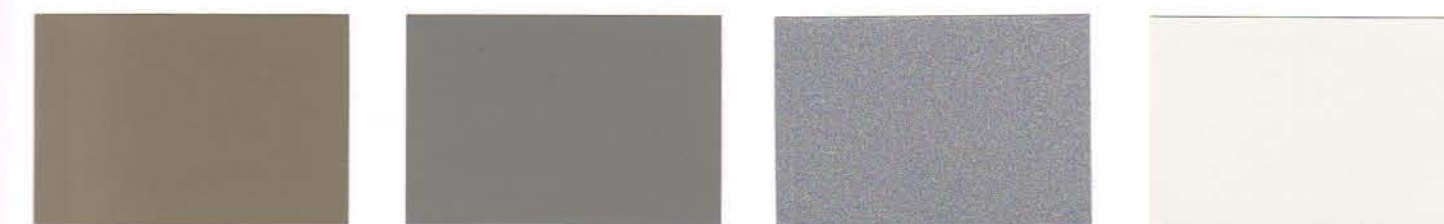
Castlepoint 4YO35 Atmosphere * 6GR09 Gecko * 2GO58 Toi Toi 5YO82



Groundbreaker * 3BO34 Bright Grey * 12HK15 Winchester 10HJ06 Titania * 7.5GR01



Yellow Metal * 11HL17 Mid Grey * 3GR49 Sword 10HJ04 Helium * 7.5GO19



Lichen * 4.5GO04 Gauntlet * 4GR85 Aluminium 13HK92 Sponge * 8.5GR03

Before you choose a Resene roof paint system, check the condition of your roof. For example, is it new, weathered or rusty? Details like these will help you get the right advice when you visit your local Resene ColorShop or Reseller, and a better result when you come to paint.

Resene Hi-Glo Acrylic House & Roof Paint is made with UV resistant pigments and tough acrylic polymers to give a long-life high gloss finish on new primed roofs or previously painted roofs. An Environmental Choice approved product, Resene Hi-Glo dries fast to form a flexible, weatherproof surface. See Data Sheet D31.

Resene Mica Bond Alkyd Finish provides extra protection in exposed salt-laden environments with a plate-protection shield (similar to overlapping fish scales) that seals out weather and resists UV light, drying to a durable low-lustre finish. See Data Sheet RA71.

Purpose-designed primers

The Resene roof paint system range includes four purpose-designed primers for you to choose from:

1. Resene Galvo One Galvanised Iron Primer is fast-drying, anti-corrosive and will weld itself to new or old (even lightly rusted) galvanised iron, providing an ideal surface for topcoating. Resene Galvo One is also recommended for use over aluminium. Overcoat within three months of application. See Data Sheet D41.

2. Resene Galvo-Prime Waterbased Galvanised Iron Primer is ideal for use on new galvanised iron or Zinalume. If the substrate is weathered, use only Resene Galvo One. See Data Sheet D402.

3. Resene Rust-Arrest Anti-Corrosive Primer has been designed specifically for red rust problems. See Data Sheet RA30.

4. Resene Vinyl Etch Metal Primer is ideal for professional application to galvanised iron, aluminium roofs and sidings and all non-ferrous surfaces. See Data Sheet RA31.

Resene Roof Wash and Paint Cleaner is a concentrated pre-treatment for all new and old unpainted galvanised roofing, and a general cleaner for previously painted surfaces including roofing. See Data Sheet D88.

Use Resene Membrane Roofing Primer for all sheet rubber roofing systems and for unsurpassed adhesion on bituminous surfaces. See Data Sheet D49.

Paint and tank water

Recommended systems for domestic water collection off roofs are Resene Galvo One or Galvo-Prime with either Resene Hi-Glo or Resene Mica Bond. Disconnect all downpipes before applying Resene roof paint. Reconnect downpipes after the first heavy showers have flushed away stabilising surfactants from the new paint film.

Cool colours

With the launch of Resene Cool Colours, you can select dark colours and keep your cool. Dark colours on areas such as roofing are suntraps soaking in the sun's rays placing significant relentless stress on the coating and the substrate. All dark colours absorb a lot of light. This in isolation is not an issue however in combination with the light absorption dark colours also absorb heat from the infra red rays of the sun causing significant temperature build up on the surface. White and light coloured paints reflect both light and heat and therefore are not affected.

The unique formulation and materials of the new 'cool' colours allows them to absorb light so they appear visually identical but simultaneously reflect a large proportion of the heat falling on them keeping the surfaces significantly cooler than their standard counterparts. In essence, the colours work by reflecting energy in the near and far infra red region of the spectrum even though they absorb strongly in the visible region.



Roof: Resene Mid Grey 3GR49

How much roof paint?

A good rule-of-thumb guide for calculating quantities is: your house's floor area plus about 40% (allows for roof pitch, corrugations, soffit overhang, etc). Trough section roofing can require significantly more. Typically a complete roof paint system requires surface preparation using Resene Roof Wash and Paint Cleaner, one coat of primer and two coats of topcoat at the recommended coverage rate specified on the product packaging.

Colour ranges

The colours on this chart have been chosen for the durability and colour-fastness of their pigments. You can also choose from many other colours found on other Resene colour charts.

COLORSTEEL® colours

Resene roof paints are available in all COLORSTEEL® colours for trims, flashings, gutterings and repaints. For heavy duty applications, Resene can supply a full range of specialist coatings. For further information call your local Resene ColorShop or Reseller.

Added protection

In common with all surface coatings, the colour of your paint finish may be affected by UV light. Resene uses the finest pigments commercially available, but even these are liable to change after constant exposure to sunlight. Any changes will be gradual, but after a few years the difference between shaded and exposed areas may become noticeable.

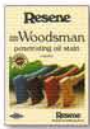
Resene Sun Defier UV Protective Glaze may be used as a finish coat over freshly painted bright organic hues and shades to protect these more vulnerable pigments against fading. See Data Sheet D502.

The end result being that a 'cool' colour will look the same as a standard colour but surface heat will build up slower and to a significantly lower level than a 'not so cool' traditional colour.

In hot summer conditions 'cool' colours will help keep the roof temperature down, minimising the energy required to keep homes and buildings maintained at a comfortable temperature. A secondary benefit is that the reduced stress on the coating and substrate will increase the expected lifetime of each.

'Cool' colour technology performs optimally on dark colours that are the most prone to heat build-up, which makes them ideally suited for dark roofing colours.

See colours marked "cc" on this chart.



Complement with a stained finish

For a natural look, try Resene Waterborne Woodsman. Resene Waterborne Woodsman is a transparent wood finish that allows you to colour your timber while still allowing the natural grain to show through. Suitable for all exterior wood surfaces, including fences, decks, gates and outdoor furniture, see the Resene Woodsman chart to view the full range. Or rejuvenate or enhance your timber deck with Resene Kwila Decking Stain, the ideal way to protect your deck and achieve a popular kwila brown finish.



Step this way

Make trafficable areas in and around your home non-skid with Resene Non-Skid Deck & Path. Available in a desirable low sheen finish, Resene Non-Skid Deck & Path may be tinted to complement existing décor, both inside and out. Combinations of contrasting colours may be used to create decorative effects in courtyards and pathed areas, either as part of a new landscaping plan or to rejuvenate weathered surfaces. See the Resene Decks, Paths, Driveways and Recreational Areas chart for more ideas on colouring the great outdoors.



Splash out

After a hard day's work, relaxing in a swimming pool is always popular. Resene Swimming Pool Paint has been specially designed for direct application to concrete swimming pools. A pool coated in Resene Swimming Pool Paint 'Magic Blue' will be less affected by chemicals used for treating pools than traditional pigmented pool finishes. The result is a longer lasting colour, giving you more time to enjoy your pool because you'll spend less time repainting it.



Pots of colour

Textured, colourwashed, painted or stained... Resene has a wide range of products suitable for decorating planters. Available in hundreds of colours, Resene testpots allow you to add colour to your garden planters without being left with litres of excess paint. Testpots are available online or from your local Resene ColorShop or Reseller.



'See' the finish

Virtual painting with Resene EzyPaint allows you to visualise the entire colour scheme before the redecorating even starts. Resene EzyPaint can be downloaded free from the Resene website www.resene.co.nz (NZ), www.resene.com.au (AUST) or purchased on CD Rom from your local Resene ColorShop or Reseller.



Explore a colour library

View an extensive range of Resene colour swatches in the online Resene colour library, then download the ones you like. Once you have found your favourites, order testpots online and try them out for yourself in the real world. Or browse through the in-store libraries of colour that can be found at most Resene ColorShops. With over 2000 variously coloured A4 swatches to pore over, you're bound to find one that suits.



Put your colour to the test

No matter how you select your colours, always use testpots to confirm your choices in the area you are planning to paint. Resene testpots are available from your local Resene ColorShop or Reseller or you can order online from the Resene website.



Choose to help the environment

You can minimise the effect your next decorating project has on the environment by choosing one of the Resene range of Environmental Choice approved products.



Caring for your paint finish

Annual washing will help maintain the fresh appearance of your paintwork. Follow the recommendations in the Resene Caring for your Paint Finish brochure or on the Resene website to keep your paint finish looking its best.

Resene

the paint the professionals use

In New Zealand: 32-50 Vogel Street, Lower Hutt, PO Box 38-242, Wellington Mail Centre
Call 0800 RESENE, visit www.resene.co.nz or email us at advice@resene.co.nz

In Australia: PO Box 785, Ashmore City, Queensland 4214
Call 1800 738 383, visit www.resene.com.au or email us at advice@resene.com.au

Colour Name	Total Colour Code	Tone	Approx RV	COLORSTEEL® Equivalent
Alert Tan	2Y062	O	22	-
All Black	1GR80	U	4	Ebony
Aluminium	13HK92	AL	92	-
Atmosphere	6GR09	W	49	Gull Grey
Barley Corn	4.5Y024	L	37	-
Blue Whale	1B48	D	8	-
Blue Zodiac	14HK4.5	ME	5	-
Bone White	7GR02	W	55	Bone White
Botanic	1.5G081	G	9	Kelp
Bright Charcoal	10HJ01	ME	6	-
Bright Grey	12HK15	ME	15	-
Castlepoint	4Y035	L	41	Straw
Cathedral	10HJ02	ME	12	-
Cloud Burst	1.5B88	MI	14	-
Coast	2B75	MI	8	Storm Blue
Desert Sand	6B076	P	42	Desert Sand
Explorer	3.5B94	MI	13	Pacific Blue
Felix	1.5B027	M	12	-
Forecast	6B85	W	50	-
Gauntlet	4GR85	MI	25	Sandstone Grey
Gecko	2G058	G	18	Spring Green
Grey Friars	1GR16	MI	8	Grey Friars
Groundbreaker	3B034	MI	15	Sorrell
Gulf Blue	2B60	M	8	-
Gumboot	1GR51	MI	5	-
Heatwave	1R038	U	11	Maple
Heavy Metal	13HL10	ME	10	-
Helium	7.5G019	W	75	Cloud
High Tide	1B82	MI	9	Indigo Blue
Indian Tan	1.5B073	O	9	-
Ironsand	1.5GR85	MI	9	Ironsand
Jurassic	1.5G090	MI	11	Gable Green
Karaka	1G016	G	7	Karaka
Lattitude	4GR75	MI	25	Smokey
Lichen	4.5G004	MI	24	Lichen
Lignite	1B018	G	8	Lignite
Maltese	3.5GR62	MI	17	-
Metallic Bronze	10HL10	ME	10	-
Metallic Copper	10HK12	ME	12	-
Mid Grey	3GR49	MI	27	-
New Denim Blue	1B90	MI	11	New Denim Blue
Old Copper	15HK16	ME	16	-
Outback	5B079	L	32	Stone
Paddock	5G045	M	24	Mist Green
Palm Green	1G059	G	4	-
Permanent Green	1G057	G	9	Permanent Green
Pioneer Red	1R042	RO	10	Pioneer Red
Racing Green	1G051	U	6	-
Rattlesnake	10HJ03	ME	8	-
Red Oxide	1R043	RO	9	-
Rivergum	3G051	G	16	Rivergum
Rustic Red	1R073	RO	5	-
Scoria	1R036	RO	9	Scoria
Seaweed	1G029	O	8	-
Sirocco	4GR73	L	31	-
Smooth Cream	5.5Y077	W	65	Smooth Cream
Sponge	8.5GR03	W	76	Foam
Squall	1GR76	MI	10	Thunder Grey
Steel Grey	2GR51	MI	13	-
Stratos	1B60	D	5	-
Sword	10HJ04	AL	37	-
Titania	7.5GR01	W	64	Titania
Toi Toi	5Y082	P	51	Ivorie
Tornado	1B67	U	4	-
Trainspotter	10HJ05	ME	11	-
Twizel	3R016	O	20	Terracotta
Undercurrent	3.5B54	MI	17	Azure
Venetian Red	1BR49	MG	8	-
Vulcan	11HK3.5	ME	4	-
Western Red	1BR50	MG	8	-
Winchester	10HJ06	AL	19	-
Yellow Metal	11HL17	ME	17	-

TO NE KEY:
AL = Aluminium D = Deep G = Green L = Light
M = Mid ME = Metallic MI = Mid Grey MG = Magenta
O = Ochre P = Pastel RO = Red Oxide U = Ultra Deep
W = White

Note 1: The approximate reflectance value (RV) of a colour indicates the amount of light and heat that a colour will reflect. Black has a reflectance value of 0% and absorbs all light and heat. The surfaces are consequently very dark and can get very hot. In contrast, white has a reflectance value of 100% and keeps a building light and cool. All colours fit within these two extremes.

Note 2: Tones listed above are subject to change if colours are reformulated.



9 418022 018636