

**NB. This chart is from the
Resene historical file.
Please refer to current
Resene colour charts
for the latest colour options**

Resene

Roof Paint Systems



Resene

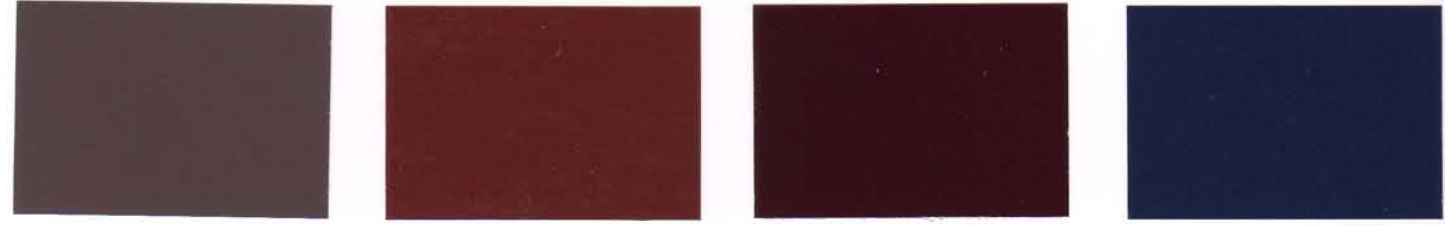
the paint the professionals use

Available in 10 litre pails
CC Available in Cool Colour

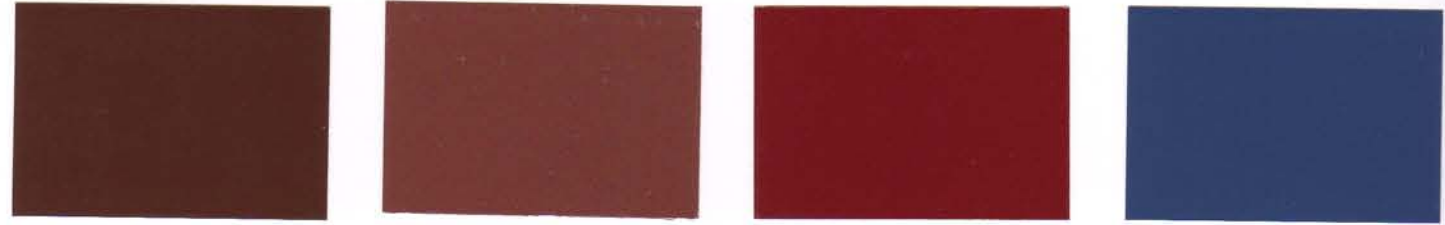
Resene Hi-Glo



acrylic roof paint



Felix 1.5BO27 Scoria * 1RO36 Rustic Red * 1RO73 Stratos 1B60



Indian Tan * CC 1.5BO73 Metallic Copper * 10HK12 Venetian Red 1BR49 Gulf Blue 2B60



Western Red 1BR50



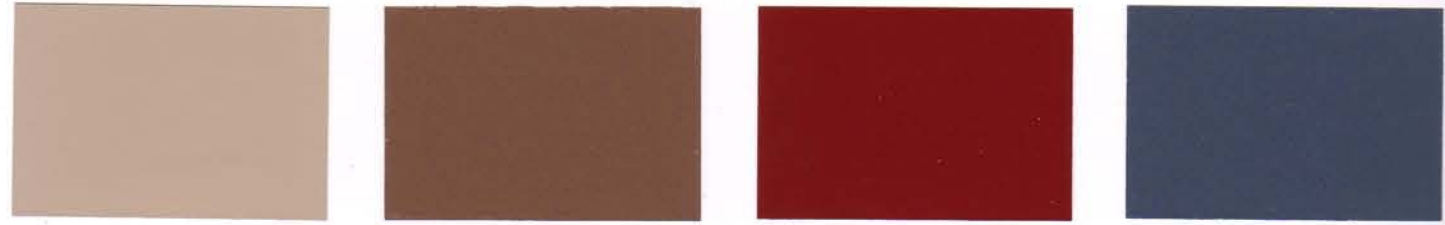
Explorer * 3.5B94



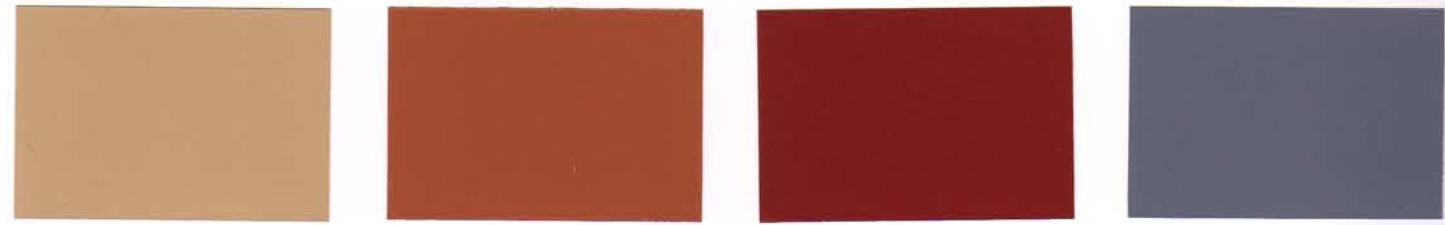
Botanic * 1.5GO81



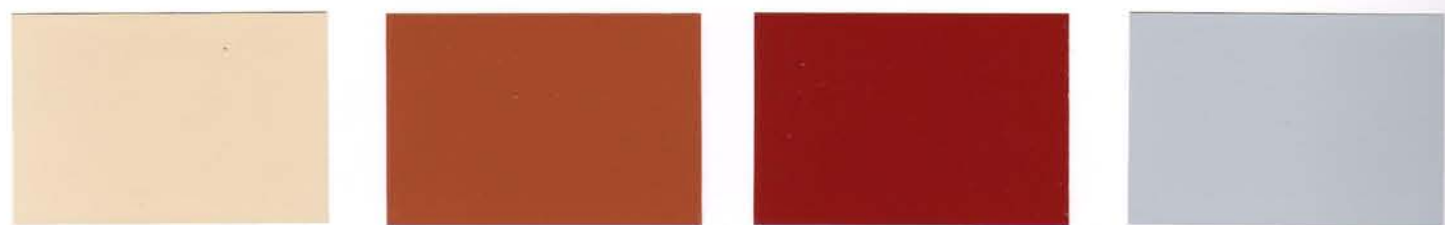
Rattlesnake * 10HJ03



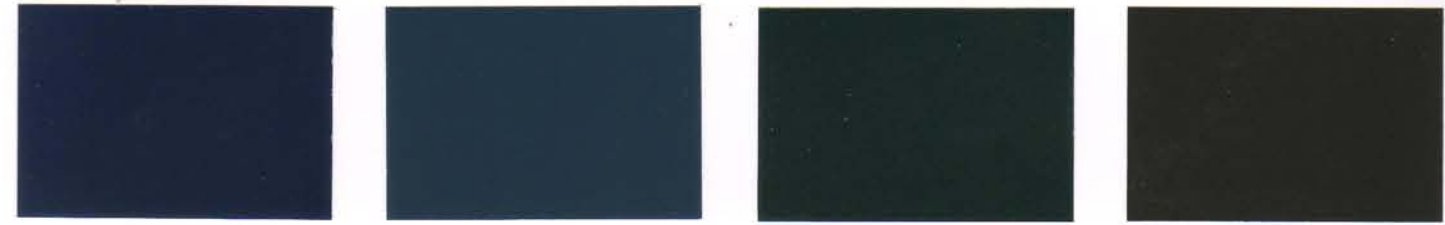
Desert Sand 6BO76 Old Copper * 15HK16 Red Oxide * 1RO43 Blue Zodiac * 14HK4.5



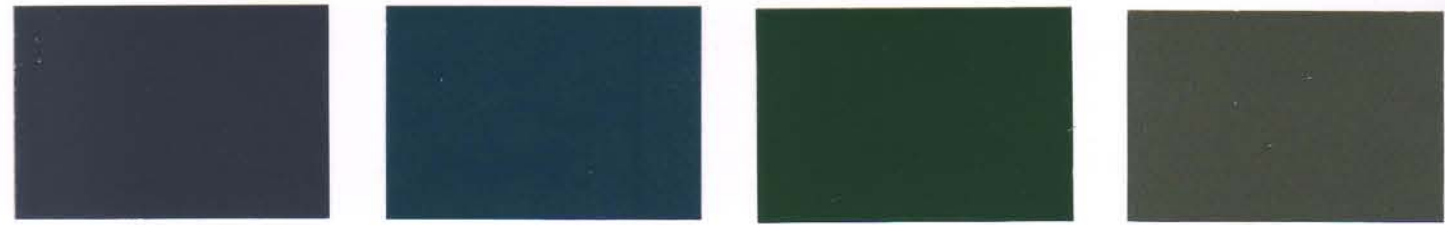
Barley Corn 4.5YO24 Twizel * 3RO16 Pioneer Red * 1RO42 Maltese * 3.5GR62



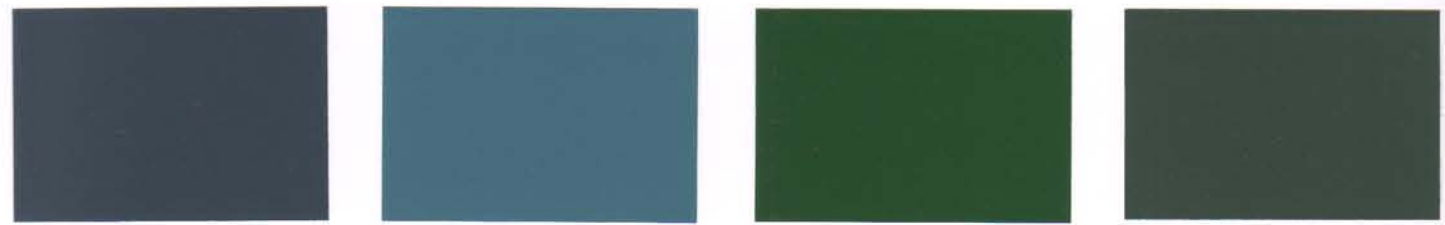
Smooth Cream * 5.5YO77 Alert Tan * 2YO62 Heatwave 1RO38 Forecast * 6B85



Tornado 1B67 Coast * 2B75 Racing Green CC 1GO51 Karaka * CC 1GO16



High Tide * 1B82 Blue Whale 1B48 Palm Green * 1GO59 Trainspotter * 10HJ05



New Denim Blue * 1B90 Undercurrent * 3.5B54 Permanent Green * 1GO57 Jurassic * 1.5GO90



Latitude * 4GR75



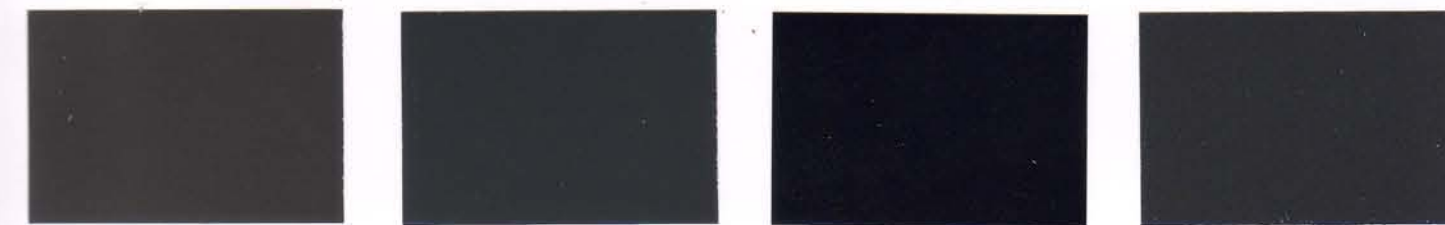
Cloud Burst * 1.5B88



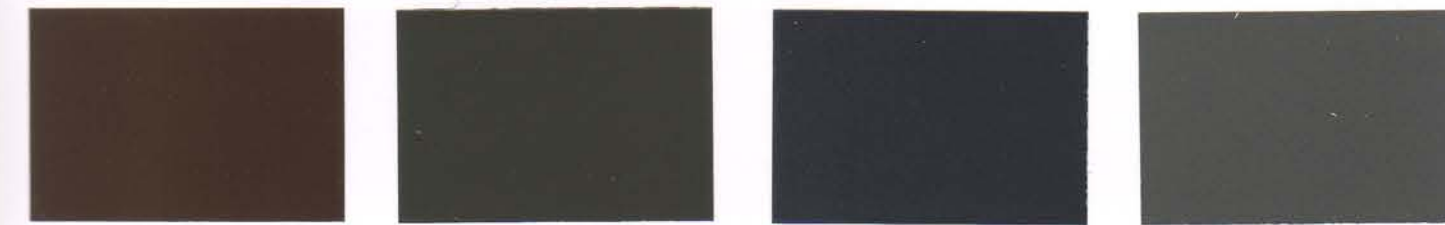
Seaweed * 1GO29



Paddock 5GO45



Ironsand * CC 1.5GR85 Grey Friars * CC 1GR16 All Black CC 1GR80 Bright Charcoal * 10HJ01



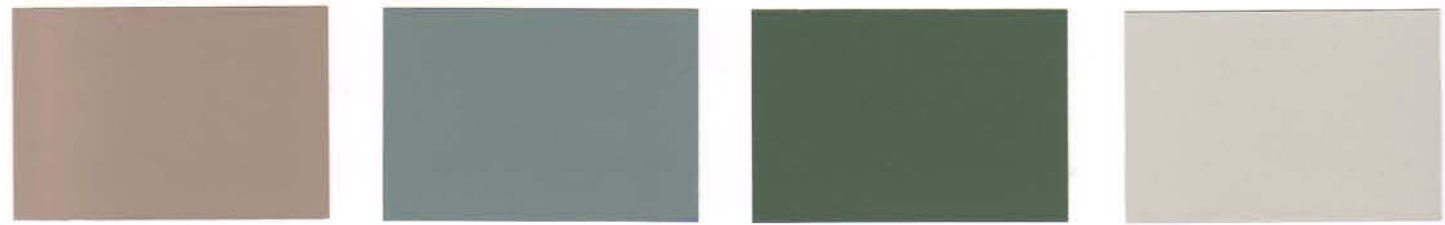
Lignite * CC 1BO18 Squall * CC 1GR76 Gumboot * CC 1GR51 Cathedral * 10HJ02



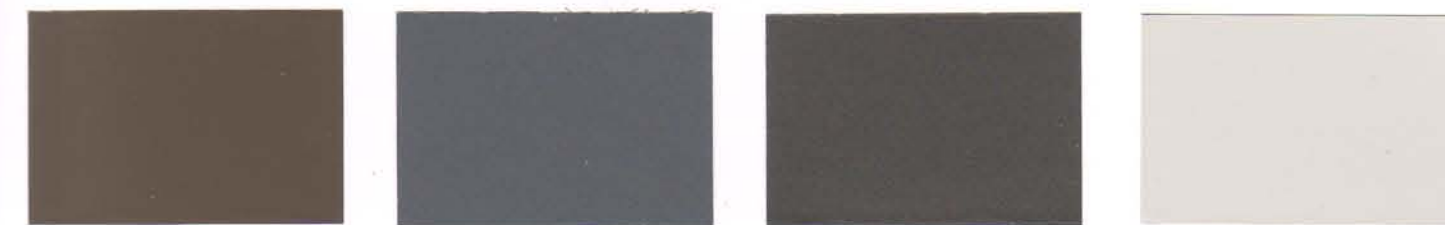
Metallic Bronze * 10HL10 Heavy Metal * 13HJ10 Vulcan * 11HK3.5 Steel Grey * CC 2GR51



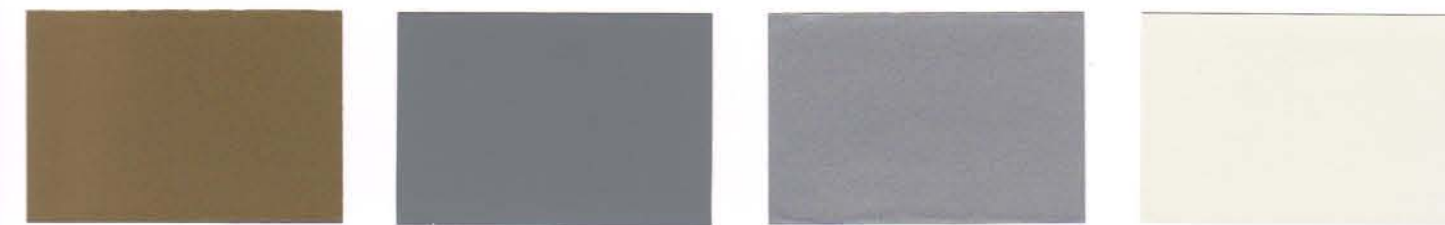
Outback 5BO79 Sirocco 4GR73 Rivergum * 3GO51 Bone White * 7GR02



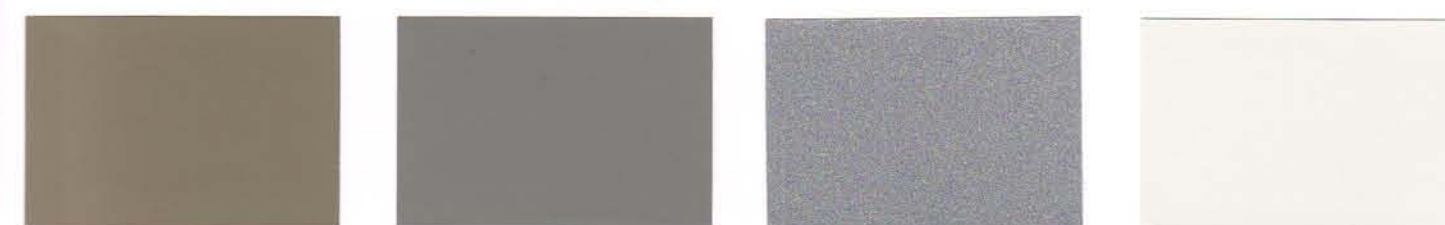
Castlepoint 4YO35 Atmosphere * 6GR09 Gecko * 2GO58 Toi Toi 5YO82



Groundbreaker * 3BO34 Bright Grey * 12HK15 Winchester 10HJ06 Titania * 7.5GR01



Yellow Metal * 11HL17 Mid Grey * 3GR49 Sword 10HJ04 Helium * 7.5GO19



Lichen * 4.5GO04 Gauntlet * 4GR85 Aluminium 13HK92 Sponge * 8.5GR03

Before you choose a Resene roof paint system, check the condition of your roof. For example, is it new, weathered or rusty? Details like these will help you get the right advice when you visit your local Resene ColorShop or Reseller, and a better result when you come to paint.

Resene Hi-Glo Acrylic House & Roof Paint is made with UV resistant pigments and tough acrylic polymers to give a long-life high gloss finish on new primed roofs or previously painted roofs. An Environmental Choice approved product, Resene Hi-Glo dries fast to form a flexible, weatherproof surface. See Data Sheet D31.

Resene Mica Bond Alkyd Finish provides extra protection in exposed salt-laden environments with a plate-protection shield (similar to overlapping fish scales) that seals out weather and resists UV light, drying to a durable low-lustre finish. See Data Sheet RA71.

Purpose-designed primers

The Resene roof paint system range includes four purpose-designed primers for you to choose from:

1. Resene Galvo One Galvanised Iron Primer is fast-drying, anti-corrosive and will weld itself to new or old (even lightly rusted) galvanised iron, providing an ideal surface for topcoating. Resene Galvo One is also recommended for use over aluminium. Overcoat within three months of application. See Data Sheet D41.

2. Resene Galvo-Prime Waterbased Galvanised Iron Primer is ideal for use on new galvanised iron or Zinalume. If the substrate is weathered, use only Resene Galvo One. See Data Sheet D402.

3. Resene Rust-Arrest Anti-Corrosive Primer has been designed specifically for red rust problems. See Data Sheet RA30.

4. Resene Vinyl Etch Metal Primer is ideal for professional application to galvanised iron, aluminium roofs and sidings and all non-ferrous surfaces. See Data Sheet RA31.

Resene Roof Wash and Paint Cleaner is a concentrated pre-treatment for all new and old unpainted galvanised roofing, and a general cleaner for previously painted surfaces including roofing. See Data Sheet D88.

Use Resene Membrane Roofing Primer for all sheet rubber roofing systems and for unsurpassed adhesion on bituminous surfaces. See Data Sheet D49.

Paint and tank water

Recommended systems for domestic water collection off roofs are Resene Galvo One or Galvo-Prime with either Resene Hi-Glo or Resene Mica Bond. Disconnect all downpipes before applying Resene roof paint. Reconnect downpipes after the first heavy showers have flushed away stabilising surfactants from the new paint film.

Cool colours

With the launch of Resene Cool Colours, you can select dark colours and keep your cool. Dark colours on areas such as roofing are suntraps soaking in the sun's rays placing significant relentless stress on the coating and the substrate. All dark colours absorb a lot of light. This in isolation is not an issue however in combination with the light absorption dark colours also absorb heat from the infra red rays of the sun causing significant temperature build up on the surface. White and light coloured paints reflect both light and heat and therefore are not affected.

The unique formulation and materials of the new 'cool' colours allows them to absorb light so they appear visually identical but simultaneously reflect a large proportion of the heat falling on them keeping the surfaces significantly cooler than their standard counterparts. In essence, the colours work by reflecting energy in the near and far infra red region of the spectrum even though they absorb strongly in the visible region.



Roof: Resene Mid Grey 3GR49

How much roof paint?

A good rule-of-thumb guide for calculating quantities is: your house's floor area plus about 40% (allows for roof pitch, corrugations, soffit overhang, etc). Trough section roofing can require significantly more. Typically a complete roof paint system requires surface preparation using Resene Roof Wash and Paint Cleaner, one coat of primer and two coats of topcoat at the recommended coverage rate specified on the product packaging.

Colour ranges

The colours on this chart have been chosen for the durability and colour-fastness of their pigments. You can also choose from many other colours found on other Resene colour charts.

COLORSTEEL® colours

Resene roof paints are available in all COLORSTEEL® colours for trims, flashings, gutterings and repaints. For heavy duty applications, Resene can supply a full range of specialist coatings. For further information call your local Resene ColorShop or Reseller.

Added protection

In common with all surface coatings, the colour of your paint finish may be affected by UV light. Resene uses the finest pigments commercially available, but even these are liable to change after constant exposure to sunlight. Any changes will be gradual, but after a few years the difference between shaded and exposed areas may become noticeable.

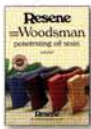
Resene Sun Defier UV Protective Glaze may be used as a finish coat over freshly painted bright organic hues and shades to protect these more vulnerable pigments against fading. See Data Sheet D502.

The end result being that a 'cool' colour will look the same as a standard colour but surface heat will build up slower and to a significantly lower level than a 'not so cool' traditional colour.

In hot summer conditions 'cool' colours will help keep the roof temperature down, minimising the energy required to keep homes and buildings maintained at a comfortable temperature. A secondary benefit is that the reduced stress on the coating and substrate will increase the expected lifetime of each.

'Cool' colour technology performs optimally on dark colours that are the most prone to heat build-up, which makes them ideally suited for dark roofing colours.

See colours marked "cc" on this chart.



Complement with a stained finish

For a natural look, try Resene Waterborne Woodsman. Resene Waterborne Woodsman is a transparent wood finish that allows you to colour your timber while still allowing the natural grain to show through. Suitable for all exterior wood surfaces, including fences, decks, gates and outdoor furniture, see the Resene Woodsman chart to view the full range. Or rejuvenate or enhance your timber deck with Resene Kwila Timber Stain, the ideal way to protect your deck and achieve a popular kwila brown finish.

Step this way

Make trafficable areas in and around your home non-skid with Resene Non-Skid Deck & Path. Available in a desirable low sheen finish, Resene Non-Skid Deck & Path may be tinted to complement existing décor, both inside and out. Combinations of contrasting colours may be used to create decorative effects in courtyards and pathed areas, either as part of a new landscaping plan or to rejuvenate weathered surfaces. See the Resene Decks, Paths, Driveways and Recreational Areas chart for more ideas on colouring the great outdoors.

Splash out

After a hard day's work, relaxing in a swimming pool is always popular. Resene Swimming Pool Paint has been specially designed for direct application to concrete swimming pools. A pool coated in Resene Swimming Pool Paint 'Magic Blue' will be less affected by chemicals used for treating pools than traditional pigmented pool finishes. The result is a longer lasting colour, giving you more time to enjoy your pool because you'll spend less time repainting it.

Pots of colour

Textured, colourwashed, painted or stained... Resene has a wide range of products suitable for decorating planters. Available in hundreds of colours, Resene testpots allow you to add colour to your garden planters without being left with litres of excess paint. Testpots are available online or from your local Resene ColorShop or Reseller.

'See' the finish

Virtual painting with Resene EzyPaint allows you to visualise the entire colour scheme before the redecorating even starts. Resene EzyPaint can be downloaded free from the Resene website www.resene.co.nz (NZ), www.resene.com.au (AUST) or purchased on CD Rom from your local Resene ColorShop or Reseller.

Explore a colour library

View an extensive range of Resene colour swatches in the online Resene colour library, then download the ones you like. Once you have found your favourites, order testpots online and try them out for yourself in the real world. Or browse through the in-store libraries of colour that can be found at most Resene ColorShops. With over 2000 variously coloured A4 swatches to pore over, you're bound to find one that suits.

Put your colour to the test

No matter how you select your colours, always use testpots to confirm your choices in the area you are planning to paint. Resene testpots are available from your local Resene ColorShop or Reseller or you can order online from the Resene website.

Choose to help the environment

You can minimise the effect your next decorating project has on the environment by choosing one of the Resene range of Environmental Choice approved products.

Caring for your paint finish

Annual washing will help maintain the fresh appearance of your paintwork. Follow the recommendations in the Resene Caring for your paint finish brochure or on the Resene website to keep your paint finish looking its best.

Resene

the paint the professionals use

In New Zealand: 32-50 Vogel Street, Lower Hutt, PO Box 38-242, Wellington Mail Centre
Call 0800 RESENE, visit www.resene.co.nz or email us at advice@resene.co.nz

In Australia: PO Box 785, Ashmore City, Queensland 4214
Call 1800 738 383, visit www.resene.com.au or email us at advice@resene.com.au

Colour name	Tone	Total colour code	Approx RV %	Original colour code	COLORSTEEL® equivalent
Alert Tan	O	052-095-052	20	2Y062	-
All Black	CC	U N25-001-264	4	1GR80	Ebony
Aluminium	AL	M74-003-235	46	13HK92	-
Atmosphere	W	N76-004-127	49	6GR09	Gull Grey
Barley Corn	L	Y70-065-074	41	4.5Y024	-
Blue Whale	D	B35-028-238	8	1B48	-
Blue Zodiac	ME	M37-024-268	10	14HK4.5	-
Bone White	W	G79-015-099	55	7GR02	Bone White
Botanic	G	G35-033-153	9	1.5G081	Kelp
Bright Charcoal	ME	M29-002-272	6	10HJ01	-
Bright Grey	ME	M47-006-264	16	12HK15	-
Castlepoint	L	BR70-050-078	41	4Y035	Straw
Cathedral	ME	M41-002-169	12	10HJ02	-
Cloud Burst	MI	B39-022-263	11	1.5888	-
Coast	MI	B35-023-248	8	2B75	Storm Blue
Desert Sand	P	BR71-036-074	42	6B076	Desert Sand
Explorer	MI	B43-024-232	13	3.5894	Pacific Blue
Felix	M	BR41-016-039	12	1.5B027	-
Forecast	W	B76-010-243	50	6B85	-
Gauntlet	MI	N57-006-087	25	4GR85	Sandstone Grey
Gecko	G	G49-031-149	18	2G058	Spring Green
Grey Friars	CC	MI N35-004-253	8	1GR16	Grey Friars
Groundbreaker	MI	BR45-021-070	15	3B034	Sorrell
Gulf Blue	M	B39-065-271	11	2B60	-
Gumboot	CC	MI N34-005-272	8	1GR51	-
Heatwave	U	R39-094-036	11	1R038	Maple
Heavy Metal	ME	M37-011-109	10	13HL10	-
Helium	W	G89-013-107	75	7.5G019	Cloud
High Tide	MI	B36-011-261	9	1B82	Indigo Blue
Indian Tan	CC	O BR37-040-050	9	1.5B073	-
Ironsand	CC	MI N36-003-056	9	1.5GR85	Ironsand
Jurassic	MI	G40-011-170	11	1.5G090	Gable Green
Karaka	CC	G G31-010-106	7	1G016	Karaka
Lattitude	MI	N57-006-142	25	4GR75	Smokey
Lichen	MI	Y56-030-087	24	4.5G004	Lichen
Lignite	CC	G BR34-021-058	8	1B018	Lignite
Maltese	MI	V48-011-288	17	3.5GR62	-
Metallic Bronze	ME	M40-023-069	11	10HL10	-
Metallic Copper	ME	M40-056-036	12	10HK12	-
Mid Grey	MI	N55-005-250	23	3GR49	-
New Denim Blue	CC	MI B39-012-250	11	1B90	New Denim Blue
Old Copper	ME	M45-048-056	15	15HK16	-
Outback	L	BR64-029-071	32	5B079	Stone
Paddock	M	G56-028-117	24	5G045	Mist Green
Palm Green	G	G34-023-164	8	1G059	-
Permanent Green	G	G37-031-154	9	1G057	Permanent Green
Pioneer Red	RO	R39-075-033	11	1R042	Pioneer Red
Racing Green	CC	U G27-011-180	5	1G051	-
Rattlesnake	ME	M34-015-036	8	10HJ03	-
Red Oxide	RO	R35-080-034	9	1R043	-
Rivergum	G	G47-022-138	16	3G051	Rivergum
Rustic Red	RO	R29-033-024	6	1R073	-
Scoria	RO	R36-049-033	9	1R036	Scoria
Seaweed	O	G38-025-121	10	1G029	-
Sirocco	L	G59-013-160	27	4GR73	-
Smooth Cream	W	Y84-041-081	65	5.5Y077	Smooth Cream
Sponge	W	G90-012-101	76	8.5GR03	Foam
Squall	CC	MI N38-006-103	10	1GR76	Thunder Grey
Steel Grey	CC	MI N42-006-256	12	2GR51	-
Stratos	D	B31-029-275	7	1B60	-
Sword	AL	M66-002-254	36	10HJ04	-
Titania	W	G84-012-095	67	7.5GR01	Titania
Toi Toi	P	Y77-033-087	51	5Y082	Ivorie
Tornado	U	B30-020-267	5	1B67	-
Trainspotter	ME	M40-010-131	11	10HJ05	-
Twizel	O	O51-083-050	20	3R016	Terracotta
Undercurrent	MI	B49-037-228	17	3.5B54	Azure
Venetian Red	MG	R35-067-026	9	1BR49	-
Vulcan	ME	M32-008-267	7	11HK3.5	-
Western Red	MG	R37-084-027	8	1BR50	-
Winchester	AL	M50-006-077	19	10HJ06	-
Yellow Metal	ME	M52-053-080	20	11HL17	-

Key:
 AL = Aluminium D = Deep G = Green L = Light M = Mid
 ME = Metallic MI = Mid grey MG = Magenta O = Ochre P = Pastel
 RO = Red oxide U = Ultra deep W = White CC = Available as a Cool Colour

Note 1: The approximate reflectance value (RV) of a colour indicates the amount of light and heat that a colour will reflect. Black has a reflectance value of 0% and absorbs all light and heat. The surfaces are consequently very dark and can get very hot. In contrast, white has a reflectance value of 100% and keeps a building light and cool. All colours fit within these two extremes.

Note 2: Tones listed above are subject to change if colours are reformulated.

Note 3: Colours may be available in selected products or sizes only. Check with Resene ColorShop or Reseller staff to ensure your selected colour is available in the product and/or size you require.



9 418022 018636