

**NB. This chart is from the
Resene historical file.
Please refer to current
Resene colour charts
for the latest colour options**

Resene

Metallics and Special Effects

exterior/interior

Resene
Total Colour
System



Resene

the paint the professionals use

Resene

Metallics, Special Effects



Copperhead 18MA70



Lodestar 18MA55



Horoscope 12MA15



Copper Fire 21MG40



Gold Dust 19MG40



Spark 18MB42



Magma 19MG20



Gold 19MG50



Blast Yellow 19MB30



Bullion 20MG40



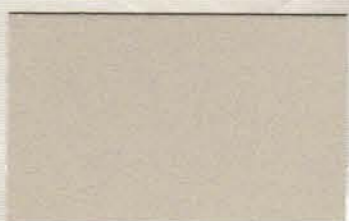
Carat 19MB55



Goldmine 20MA40



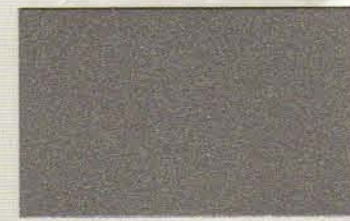
Deep Space 11MA20



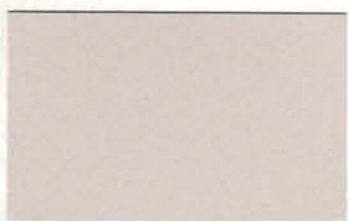
Platinum 19MA60



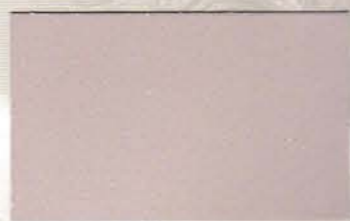
Axis 18MA45



Pure Pewter 10MA40



Bedrock 10MA50



Effervescent 18MA20



Atom 17MB15



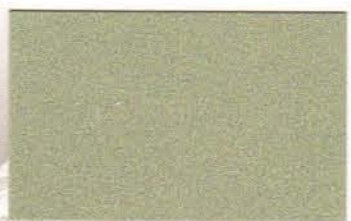
Magnetic 17MB25



Pioneer 15MA10



Techno 19MA55



Stun 17MA50



Proton 16MA50



Basalt 9MB20



Gravity 10MA20



Mica 15MB10



Isobar 15MA15



Obelisk 15MA38



Infinity 15MA45



Catch 22 12MA10



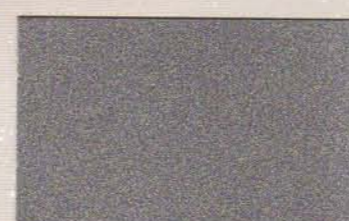
Blast Grey 1 11MB10



Blast Grey 2 11MB20



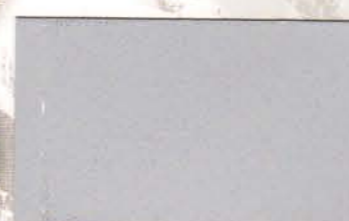
Blast Grey 3 11MB30



Aluminium 11MA40



Silver Aluminium 11MA50



Metro 11MA60



Lucifer 13MB10



Sputnik 14MB10



Time Warp 14MA20



Dalek 14MB30



Scotty Silver 14MA40



Allusive 15MA55



White Metal 11MB35



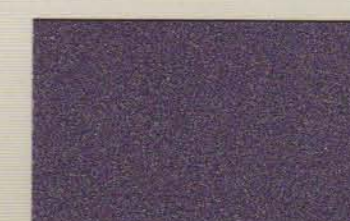
Light Year 12MB15



Digital Blue 13MB20



Zodiac 13MB25



Aurora 12MB40



Jupiter 13MA45



Nitro 13MA50



Adrenalin Junkie 18MB45



Sunspot 18MA10



Solar Flare 18MB28



Galaxy 18MA25



Pixie Dust 10PD10



Pearl Shimmer 10PS10

An innovation in colour movement

Explore a range of shimmering colours with Resene's innovative Special Effects collection of metallic and pearlescent finishes. Resene has pushed the boundaries of colour, design and technology with its metallic range of 56 spectacular colours in alloys, golds, industrial greys and lustrous, powerful colours and pearlescent finishes.

With systems developed for virtually any use, Resene Special Effects will transform and add an extra dimension to a wide range of areas from exterior concrete and steelwork through to interior feature walls, doors, joinery and furniture.

Like a chameleon that changes colour according to its surroundings, light striking a surface coated with Resene Special Effects creates the unexpected illusion of colour movement. A building coated with Resene Special Effects shimmers in response to the sun's position and intensity.

Best system

Resene Enamacryl Metallic, a waterborne metallic effect finish, is recommended over exterior concrete and plaster. If being applied over fresh concrete, Resene Limelock must be applied first to cure and seal the surface, otherwise alkalinity from the concrete can attack the aluminium flake and thus destroy the integrity and appearance of the coating. Resene Enamacryl Metallic is also the preferred product for interior work because of its Environmental Choice approval and low VOC.

Resene Imperite I.F. 503, a spray applied high performance coating, is more durable than Resene Enamacryl Metallic in exterior situations and is the preferred exterior system for maximum durability, especially over new steelwork.

Resene Metallics are different in chemistry to standard acrylics and epoxies and need to be handled with precision and care. Slight variations in colour can occur between Resene Enamacryl Metallic and Resene Imperite I.F. 503 due to their inherently different film forming properties.

Resene Pearl Shimmer and **Resene Pixie Dust** are acrylic pearlescent glazes ideal for creating shimmering wall finishes and softly sparkled finishes to add visual interest and diversity to any scheme. Always used in conjunction with a tinted basecoat, both pearlescent finishes are ideal for exterior and interior areas, including trim and joinery.

Kaleidoscopic colours

Shifting walls of colour are now possible with **Kaleidoscope**, a range of paints that change colour before the eye as if by magic. A single coating created from unique colour shift pigments has the ability to change colour from any angle and even alter in different lighting from the same angle.

The Kaleidoscope range will add a little magic to many familiar items from furniture, fittings and feature areas through to cellphones and cars. Resene Kaleidoscope is a system manufactured by Resene Automotive and Performance Coatings consisting of a black ground coat and colour shift topcoats.

Call 0800 108 008 or visit www.resene.co.nz/automotive.htm for more information on this intriguing finish.

Complete the look

Resene Automotive and Performance Coatings can supply coatings for furniture tinted to the Resene Special Effects range - the perfect complement to your Resene Special Effects finish.

Keeping the scheme consistent is easy with the introduction of **Resene ArmourCat**, a range of acid-catalysed pigmented, metallic and clear finishes designed for everything from desks, shelves and shop fittings to kitchen units, timber fixtures and furniture.

Resene ArmourCat is available in an extensive selection of Resene Total Colour System hues, Resene Metallics finishes and gloss and satin clears. That means perfect matches to the Resene colours you know and love. The clears can be used in isolation to bring out the grain in timber or as a finish coat over metallics for maximum effect.



Resene Blast Grey 3.



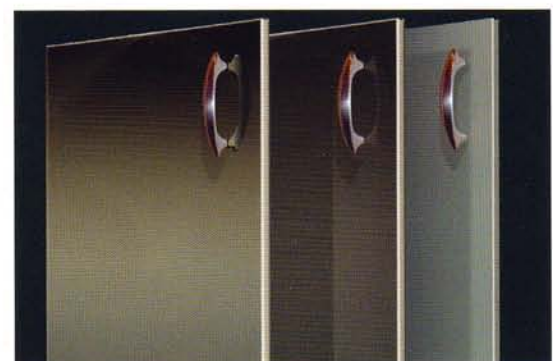
Resene Silver Aluminium.



Resene Blast Grey 2.



Resene Kaleidoscope colour shift special effect finish.



Resene ArmourCat tinted to Resene Spark (metallic), Resene Barista (solid colour) and Resene Rockbottom (solid colour).

Selecting the right system

Substrate	Resene Spec. No	Surface Prep	Primer/ Undercoat	Basecoat	First Coat	Second Coat	Optional Glaze (gloss)
Exterior Surfaces	25e 1.3/5	D83	Quick Dry D45	Lumbersider D34	Enamacryl Metallic D309a	Enamacryl Metallic D309a	Multishield+ D54a
Exterior Surfaces	25e 1.3/5*	D83	Quick Dry D45	Lumbersider D34	Lumbersider D34	Pearl Shimmer D312	Multishield+ D54a
Exterior Concrete Floor	25e 2.3/5	D83	Armourcote 510 RA40	Imperite I.F. 503 RA81	Uracryl 400 Series Clear		
Interior Anaglypta, Scandatex, etc	25i 1.3/5	D84, D85	Broadwall D403	Lumbersider D34	Enamacryl Metallic D309a	Enamacryl Metallic D309a	Aquaclear D59
Interior Paperfaced Plasterboard	25i 1.3/51	D84, D85	Broadwall D403	Lumbersider D34	Enamacryl Metallic D309a	Enamacryl Metallic D309a	Aquaclear D59
Interior MDF Joinery/Doors	25i 1.3/52	D82	Quick Dry D45	Lumbersider D34	Enamacryl Metallic D309a	Enamacryl Metallic D309a	Aquaclear D59
Interior Surfaces	25i 1.3/52*	D82 (MDF) D84, D85 (P/I/Bd)	Quick Dry D45	Lumbersider D34	Lumbersider D34	Pearl Shimmer D312	Aquaclear D59
Interior Concrete Floor	25i 2.3/5	D83	Armourcote 510 RA40	Imperite I.F. 503 RA81	Uracryl 400 Series Clear		
Interior MDF Joinery/Doors	25i 2.3/51	D82	Ultrafill 645	Imperite I.F. 503 RA81	Imperite I.F. 502 Clear D82		

Notes

- Systems will vary depending on the condition of the substrate. For example, if the substrate is porous, substitute Resene Sureseal for Resene Quick Dry and complete using your chosen basecoat and Special Effects topcoat.
- Durability and washability of Resene Enamacryl Metallic and Resene Pearl Shimmer are enhanced with a final coat of Resene Aquaclear gloss (interior) or Resene Multishield+ gloss (exterior). Allow at least 24 hours drying if overcoating with Resene Aquaclear.
- Resene Special Effects can be applied over existing substrates by changing the priming requirements.
- D83 = Product Data Sheet. Obtain copies from the Resene website or your local Resene ColorShop or Reseller.
- Resene Imperite I.F. 503 must be sprayed, however the Resene Uracryl 400 series can be brushed or rolled (Resene Uracryl cannot be sprayed unless appropriate precautions are observed).
- As a result of the nature of the metallic and pearlescent flakes the underlying colour has a bearing on the final appearance. To ensure colour accuracy, a tinted basecoat is required.
- Flake pigmented products are more difficult to apply than standard decorative topcoats. See application details below. If in doubt about any aspect of application, contact Resene.

Surface preparation

A superb finish demands excellent surface preparation, and a Level 5 finish is recommended when painting paperfaced plasterboard to minimise surface imperfections. A Level 5 finish requires skim coating of the entire surface with Resene Broadwall Surface Prep (see Data Sheet D807).

Applying Resene Special Effects finishes

Correct orientation of the metallic or pearlescent flakes is critical to achieve the best finish. If the metallic or pearlescent flakes lay at opposing angles, they will reflect light at different angles, affecting the final finish. Care must be taken during application, particularly when cutting in. Avoid touch-ups as differences in appearances may be apparent.

Spraying is the preferred application method and gives the most 'stand out' effect by sitting the metallic or pearlescent flakes up on their edges. Resene Special Effects sprayed over textured surfaces, such as Resene Sandtex (see Data Sheet D71), give the best finish.

If professional applicators are being used to apply Resene Special Effects, ensure you agree upon a sample panel before the painting commences.

The use of clear overcoats can improve the cleanability and abrasion resistance of Resene Special Effects while adding a subtle dimension to the final finish. They also improve the colour retention of the more sensitive colours.

Sound surface preparation and application are vital to ensure you achieve the best finish. Please refer to Resene Enamacryl Metallic Data Sheet D309a, Resene Imperite I.F. 503 Data Sheet RA81, Resene Pearl Shimmer Data Sheet D312 or contact your nearest Resene ColorShop or Reseller for any assistance you may require.

Applying Resene Metallics by spray:

Spraying small areas:

Spray using an H.V.L.P. in small circular motions to get an even finish. Use a 51 thou tip with a No.10 or 11 Air Cap and thin Resene Enamacryl Metallic with 5%–10% Resene Hot Weather Additive to ease the coating through the gun. For the most even finish, lay the product down in multiple thin layers holding the gun about 600mm from the surface. This gives the best metallic effect. The final layer can be sprayed as far as 800mm from the surface.

Spraying large, smooth areas:

Use a Pressure Pot system set up on convention or internal mix gun. Look for an even oval fan (wet film) when setting up. Spray to achieve an even wet film over the total surface. Thin Resene Enamacryl Metallic with 5–10% Resene Hot Weather Additive to ease the coating through the gun.

Spraying large, textured areas:

Use an airless unit or roller to apply an even first coat, then finish with light coats applied by H.V.L.P. The best results are achieved by using a Soft Edge tip, size Graco FF 414. Thin Resene Enamacryl Metallic with 5–10% Resene Hot Weather Additive. Remove all filters from the unit, and build the film in thin layers rather than one heavy coat. If you have to stop for any length of time, open up the pressure release valve and drop the pressure on the line. This will minimise the tendency for product to pack in around the valve.

If you are a contractor unsure about a project where a Resene Special Effects finish has been specified, we recommend purchasing and trialling 500ml of Resene Enamacryl Metallic, Resene Pearl Shimmer or Resene Pixie Dust to enable you to determine a fair price for the job. Lighter colours will be more difficult to spray than darker colours.

Applying Resene Metallics by roller:

If rolling, use a Resene No.1 Roller and ensure you lay-off consistently in the same direction. Cutting-in should be limited to the first coat only. Use masking tape to get close to the edges and paint opposite walls first. Use 5% Resene Hot Weather Additive for a longer open time. This will allow the flakes to settle down better. For very large areas, such as walls, mask the job into smaller sections.

Roller application - textured areas:

Resene Special Effects can be roller applied to textured surfaces, however, you need to be careful to avoid runs caused by paint caught in the hollows of the texture. Lay-off in one direction.

Roller Application - doors:

For a fine finish needed for a door, lay-off with a foam roller and follow with a glaze coat for maximum durability.

Applying Resene Metallics by brush:

Brushing is suitable for very small areas only. Use a synthetic filament brush and lay-off in one direction. Apply using a crow's foot technique to achieve a paint effects finish.

Applying Resene Pearl Shimmer and Resene Pixie Dust:

Apply the chosen basecoat tinted to your desired colour (e.g. Resene Lumbersider tinted to Nero) and allow to dry. If applying the pearlescent finish by spray, use a high volume low pressure spray with 40' fan and a 51 needle with a 10 air cap. Thin the product up 10% using a blend of Resene Hot Weather Additive and water. Spray with a 50% overlap in a very light coat to give an even wet film and allow to dry. Provided a light coat has been applied, the finish will look mildly milky but will dry back to a clear finish with small shimmering flakes. If too much product has been applied, the end finish will be milky. If brush application is preferred, apply using a crow's foot technique. Thicker ridges will appear milky (particularly with Resene Pearl Shimmer), which is part of the effect. Roller application is not recommended as it will be difficult to get an even finish.

A further coat or coats of the pearlescent finish may be applied if a more shimmering finish is desired.



Choose to help the environment

You can minimise the effect your next decorating project has on the environment by choosing from the Resene range of Environmental Choice approved products, including Resene Enamacryl Metallic.

Resene

the paint the professionals use

In New Zealand: 32-50 Vogel Street, Lower Hutt, PO Box 38-242, Wellington Mail Centre
Call 0800 RESENE, visit www.resene.co.nz or email us at advice@resene.co.nz

In Australia: PO Box 785, Ashmore City, Queensland 4214
Call 1800 738 383, visit www.resene.com.au or email us at advice@resene.com.au



Color Communications
0405 - 2980