

Underneath the arches

The graceful curves and soothing tones of this easy-to-make headboard set the scene for serene dreams



PROJECT AND STYLING Vanessa Nouwens. PHOTOGRAPHY Angie Humphreys.

The classic shape of a trio of arches is perfect for a headboard, creating a sense of calm and rest. After cutting out the arches, simply paint them in three tone-on-tone Resene colours that you love and tie them into your bedding for a mixed-not-matched look. This headboard is 2.7m wide and would suit a double or queen size bed.

YOU WILL NEED

Pencil

Tape measure

3 pieces MDF board 1200mm x 900mm x 9mm

String

Drawing pin

Jigsaw

Sandpaper

Small paint roller

3 Resene paint colours – we used 2 testpots each of Resene 'Aspiring', Resene 'Paddock' and Resene 'Bitter'

Screws or 3M hanging strips

1 On each piece of MDF, measure 45cm down from top (short) edge and make a pencil mark on left-hand and right-hand

edge. Now find the midpoint between those 2 marks and make a mark there.

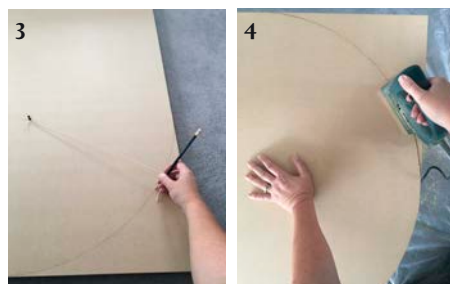
2 Tie a piece of string to your pencil and fix the other end of the string to the centre mark with a drawing pin. The string must be 45cm long.

3 Draw a semicircle from 1 pencil mark to the other, using the pencil and string.

4 Cut out arches with a jigsaw and give the edges a quick sand with sandpaper.

5 Paint in chosen Resene colours using a small roller; let dry then add another coat.

6 Screw to wall or use hanging strips.



Tips

- > Another really cool look is to make the middle arch taller than the other two.
- > If you use screws to attach to wall, countersink them and fill with wood filler. When dry, paint in the same Resene colour as the rest of the arch.

FOR MORE PAINT IDEAS VISIT
RESENE.CO.NZ OR YOUR
RESENE COLORSHOP

Resene

the paint the professionals use