

# ONE WAY OR *another*

INTERIOR DESIGNER ALEX FULTON BRINGS HER COLOUR-LOVING ENTHUSIASM TO STYLE THIS BEAUTIFUL, LOCALLY DESIGNED BELLE INTERIORS CHERRY SOFA FROM MCKENZIE & WILLIS WITH A WARMING BACKDROP OF RESENE MERLOT RED AND RESENE EIGHTH COLINS WICKET.



## COMFORT ZONE

Starting with a neutral wall and then adding a darker accent colour at the base, this deep red will help bring the mood down with a wintery warm balance. Adding a band of darker colour brings a colour change without committing to the whole space. It helps ground the furniture and highlights it with a background colour to champion the hero of this space, the Cherry Sofa.



**ALEX FULTON**  
Interior Stylist

## HEAVENLY HEIGHT

The planter's proportional height and tiered layers provide different levels to balance out an area and create a mini vignette. The colour-tonal foliage adds depth, while the dusty pink of the planter contrasts with the darker wall and is picked up in the artwork.



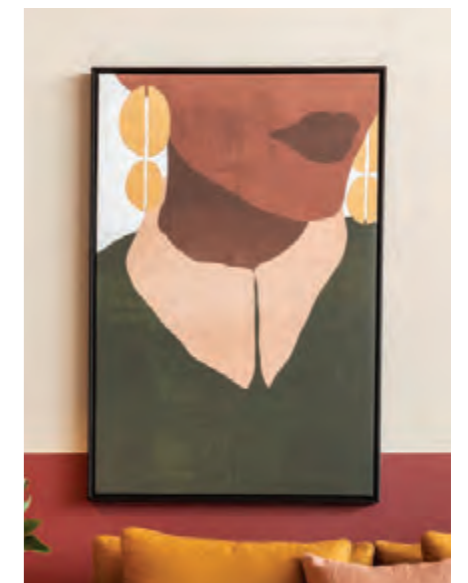
## GOING FOR GOLD

This substantial and beautifully crafted piece is a solid mark in design and style. Covered in James Dunlop Soho in Dijon, it is a bold yet very versatile colour that will complement most interior colours and styles.



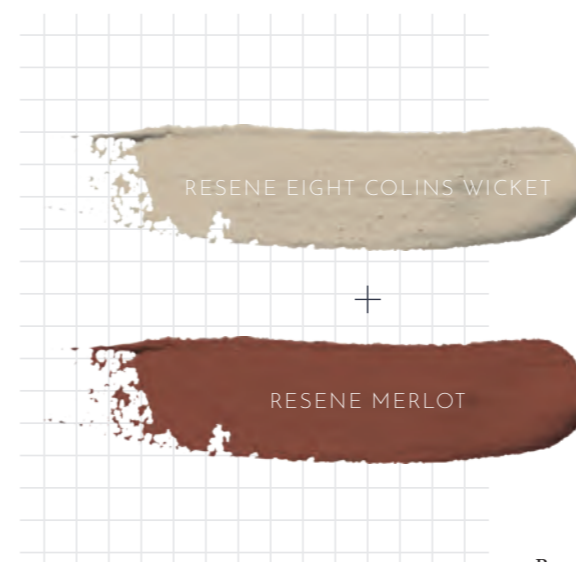
## FORM AND FUNCTION

This wee cutie Bicoca light by Marset from ECC is not only functional but is also the ideal way to add light (in three different settings) to a small space. The shade can be tilted to direct light to highlight an area as needed. There are no cables as it's charged by a USB.



## NATURALLY BOLD

This versatile print from Nood was the perfect accompaniment for this space, as it brought together the soft pinks from the accessories and the mustard from the sofa. Its bold graphic added some interest to pull the space together.



**COMFORT ZONE:** Belle Interiors Cherry Sofa in Dijon [mckenzieandwillis.co.nz](http://mckenzieandwillis.co.nz); The Earrings Framed Canvas [nood.co.nz](http://nood.co.nz); Mahoe Plant Stand Large in Blush [icotraders.co.nz](http://icotraders.co.nz); Bicoca Lamp by Marset in Red Wine [ecc.co.nz](http://ecc.co.nz); Face Vases [nood.co.nz](http://nood.co.nz); Cushions in Heavy Jute Linen in Rose and Plum [cittadesign.com](http://cittadesign.com); Coffee Table stylist's own; Resene Eight Colins Wicket and Resene Merlot in Resene SpaceCote Low Sheen [resene.co.nz/colorshops](http://resene.co.nz/colorshops)



# ONE WAY OR *another*

HERE, ALEX FULTON STYLES THE CHERRY SOFA WITH EARTH-TONED WALLS IN RESENE LEATHER AND RESENE KUBRICK TO CREATE A COSY WINTER LIVING SPACE.

## DOWN TO EARTH

You can be neutral with colour, and in this setting, the colours combine a very soft lilac with a barely-there brown to create a dual-toned backdrop for our sofa and the natural tonal elements of the accessories. Breaking the space with a vertical colour block helps to create some tonal interest and height to a space, or interest to a boring corner.

## ORGANIC FORMS

The sculptural vases from Ned Collections are the perfect muse to the neutral palette. They add texture and organic forms, and seeing them in a trio moves the eye and connects the space. Adding dried willow sticks provides height and connects the colour of the sofa to the space.

## TEXTURAL ADORNMENT

Walls can be adorned with more than art – adding texture rather than a 2D image is a way to add some depth to a space. This ceramic piece has movement, picking up light and creating interest through the play with clay and wood.



## GROUNDING WARMTH

Grounding a space with a textured and neutral rug ties a room together and makes a cohesive space. In these colder months, a rug is an easy way to add a layer of character and toastiness.



**DOWN TO EARTH:** Belle Interiors Cherry Sofa in Dijon [mckenzieandwillis.co.nz](http://mckenzieandwillis.co.nz); Ned Collections Kansas Vases and Dried Willow Sticks [harakekeflorist.co.nz](http://harakekeflorist.co.nz); Ned Collections Belize Stumpy Wooden Stool, Wooley Poof, Ceramic and Wood Mobile and Natural Jute Rug all from The Long Way Home [thetannery.co.nz](http://thetannery.co.nz); Resene Leather and Resene Kubrick in Resene SpaceCote Low Sheen [resene.co.nz/colorshops](http://resene.co.nz/colorshops)