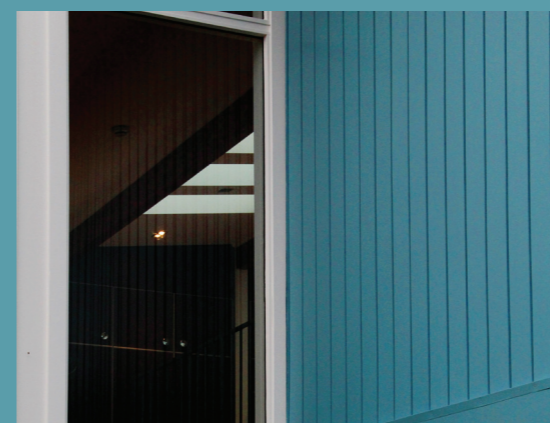


# Summers House Wellington



This home was largely untouched since it was built in the early 1960s. We were asked to bring this elegant property into the new millennium, revitalised and fresh for a family of four.

The quality of the construction materials was excellent, making the redesign of the house a real joy. We opened up the kitchen and living/dining areas and removed the separate entry and dark hallway. A bank of skylights was built around the newly exposed skillion ceiling directly over the new open plan kitchen.

From the beginning we were keen to connect the exterior form with a pervasive sense of being inside within a simple folder awning like roof. There is now a much bolder flow and visual connection from inside to out, at the front and back of the home, where there was nothing before.

The exterior colour scheme is part of the

interior and vice versa. The clients were open to strong, saturated colours that revitalised this gem of the aspirational 60s suburban culture.

Anchoring the base with a deep tone we matched the new garage doors to the new aluminium windows and doors, providing a clear definition of the new architectural moves. The grey mid-blue engages with the surrounding hills, which are clad in native bush, while also delivering a crisp and confident response to the beiges and greys of the surrounding generic houses.

The other colours are mid and deep neutrals to frame and enhance the blue, the red front door and to flow through to support the interior palette of muddled rich warm earth tones.

Overall there is a delightful sense of celebration of the optimism of the 60s with a substantially more open/interior focused, light filled family home.

Black White

Bullseye

Calypso

DNA

Stonewall

**Architectural Specifier:** John Mills  
Architects [www.j-m.a.co.nz](http://www.j-m.a.co.nz)  
**Building Contractor:** Jack Construction  
**Painting Contractor:** G + A Decorators

**Colours Used:** Resene Black White,  
Resene Bullseye, Resene Calypso,  
Resene DNA, Resene Stonewall

 Resene Awash