

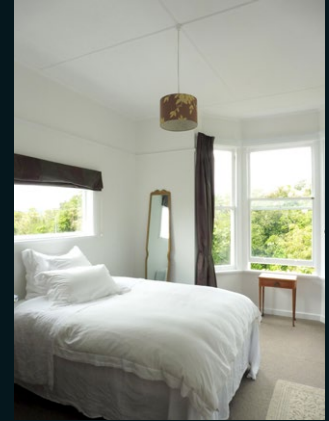


Transform a large bedroom into a light and airy space with a selection of fresh Resene whites.

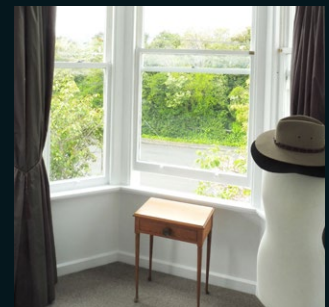
★★★ Difficulty level ★ easy ★★ moderate ★★★ challenging

Room for Improvement with Mark Rayner – 5

<b>Room</b>	Bedroom
<b>Condition</b>	Excellent
<b>Ceiling</b>	Previously painted with waterborne ceiling paint
<b>Woodwork</b>	Previously painted with waterborne semi-gloss paint
<b>Walls</b>	Previously painted with waterborne low sheen paint



**To get the look:**  
Mark revamped the wooden table by the window with Resene Danska Teak Oil.



### You will need:

- Bucket with warm water
- Clean cloths
- Dropcloth
- Paintbrushes
- Paint roller and tray
- Paint roller extension handle
- Paint stirrer
- Resene Interior Paintwork Cleaner
- Resene Lustacryl tinted to Resene Half Alabaster
- Resene Quick Dry
- Resene SpaceCote Flat tinted to Resene Black White
- Resene SpaceCote Flat White
- Rubber gloves
- Sandpaper
- Screwdriver



### Step one

Take down blinds and curtains as well as curtain tracks from the window frames and then carefully remove door handles as well as any light switch and socket cover plates.



### Step two

Mix one part Resene Interior Paintwork Cleaner to sixty parts clean warm water.



### Step three

Wearing rubber gloves, carefully wash the ceiling and walls with the solution, wiping off any excess with a clean dry cloth.



### Step four

Wearing rubber gloves, carefully wash the woodwork with the solution, again, wiping off any excess with a clean dry cloth. Allow to dry.

Steps 5-16 overleaf >

**Other ideas:**  
To inject a little colour, choose a pale pastel such as Resene Soft Mint for the walls.



**Step five**  
Lightly sand all the woodwork to 'key' the surface and then wipe off any sanding residue with a clean cloth.



**Step six**  
Carefully stir the Resene Quick Dry.



**Step seven**  
Spot prime any areas of bare wood on the woodwork with Resene Quick Dry and allow to dry.



**Step eight**  
Carefully stir the Resene SpaceCote Flat White.



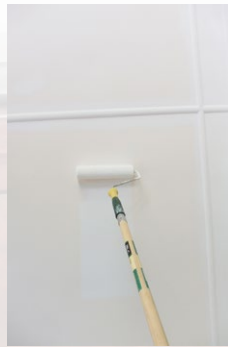
**Handy hints:**

An angled brush will make cutting in quicker and easier – ask local Resene ColorShop staff for the correct size.

Using a paint roller extension handle will enable you to roll the ceiling without having to use a ladder.



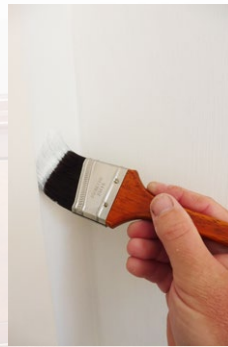
**Step nine**  
Cut in around the edges of the ceiling and around the central light fitting with the Resene SpaceCote Flat White.



**Step ten**  
Roll the remainder of the ceiling and allow the paint to dry. Apply a second coat of Resene SpaceCote Flat White to the ceiling and allow to dry.



**Step eleven**  
Carefully stir the Resene SpaceCote Flat tinted to Resene Black White.



**Step twelve**  
Cut in around all the woodwork, corners, light switches and sockets with the Resene SpaceCote Flat tinted to Resene Black White



**Step thirteen**  
Roll the remainder of the walls with Resene SpaceCote Flat tinted to Resene Black White and allow to dry. Apply a second coat of Resene SpaceCote Flat tinted to Resene Black White and allow to dry.



**Step fourteen**  
Carefully stir the Resene Lustacryl tinted to Resene Half Alabaster.



**Step fifteen**  
Apply two coats of Resene Lustacryl tinted to Resene Half Alabaster to all the woodwork, allowing dry time between coats. Allow to dry.



**Step sixteen**  
Refit curtain tracks to the window frames as well as door handles and any light switch and socket cover plates. Rehang blinds and curtains.

**Top tip:**

In very warm weather use Resene Hot Weather Additive to prevent paint from drying too quickly.

For a smoother finish on trim and joinery, use Resene Brushing Additive.

For more ideas and inspiration visit your local Resene ColorShop or [www.resene.com/colorshops](http://www.resene.com/colorshops).

Check out more project ideas online [www.resene.com/projects](http://www.resene.com/projects).