

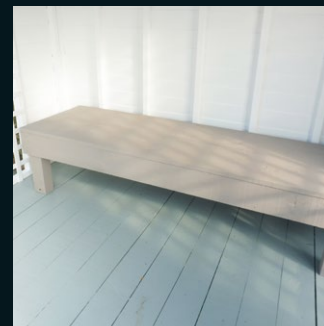
★★★ Difficulty level ★ easy ★★ moderate ★★★ challenging

Ways with wood
with Mark Rayner – 77

You will need:

- 50mm exterior screws
- 75mm x 100mm fence post (2.4m long)
- 2m fence palings (x6)
- 2.4m fence paling
- Paintbrush
- Paint stirrer
- Pencil
- Resene Waterborne Woodsman tinted to Resene Bleached Riverstone
- Sandpaper
- Saw
- Screwdriver
- Set square
- Stiff-bristled brush
- Tape measure

Create this stylish garden daybed from fence palings and Resene Waterborne Woodsman – perfect for relaxing over the warmer months.



Step one

Measure, mark and cut four 450mm lengths from the fence post to form the legs of the daybed.



Step two

Cut the remainder of the fence post into a 520mm length and cut the 2.4m fence paling into four 520mm lengths.



Step three

Attach the legs to two of the 2m lengths of fence paling, as shown. Fix with 50mm screws.



Step four

On a flat surface, assemble the base of the daybed, as shown, fixing with 50mm screws.



Step five

Turn the base the right way up and fix the four remaining fence palings in place to form the top.



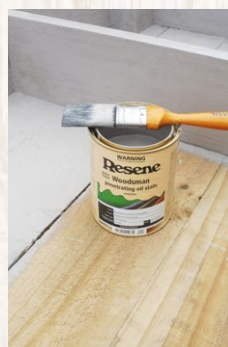
Step six

Sand any rough edges with coarse sandpaper and brush off any sanding residue with a stiff-bristled brush.



Step seven

Carefully stir the Resene Waterborne Woodsman with a paint stirrer.

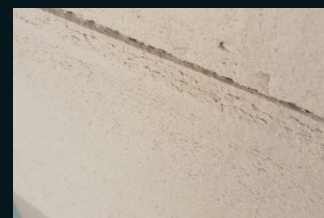


Step eight

Apply two coats of Resene Waterborne Woodsman to the daybed, allowing two hours for each coat to dry.

To get the look:

Mark painted the background summer house wall with Resene Lumbersider tinted to Resene Alabaster.



Other ideas:

For a rich red effect, stain the daybed with Resene Waterborne Woodsman tinted to Resene Totem Pole.

For more ideas and inspiration visit your local Resene ColorShop or www.resene.com/colorshops.

Check out more project ideas online www.resene.com/projects.