

Resene

HEAD OFFICE AND FACTORY, GOUGH ST, PETONE, NEW ZEALAND, PHONE 684-319

AUTUMN 1986

New Release:

Zylone 20 brings Space Age Tech to Walls

"The ultimate flat wall paint."

Resene's new Zylone 20 wallcovering offers for the first time a product that achieves the long-sought goal of an absolute matt, suede-like surface without side sheen also possessing a surface that resists even the most vigorous cleaning.

This new product follows intensive research by Resene into burnish resistance. Conducted under the direction of technical director Colin Gooch, the Resene team ascribed great significance to the polymer modules of elasticity, resilience and thermoplasticity.

Great attention was paid to the interfaces between polymer and pigment.

The formulation that resulted - Zylone 20 - has taken the surface coatings industry to one of its goals, the ultimate flat wall paint.

"With the release of our Total Colour System last year, we served notice on the industry that we had accelerated still further our policy of non-stop innovation" commented Managing director Tony Nightingale.

"With Zylone 20, based on Total Colour, we have again set out to demonstrate that we will give our users the most innovative product, long before our competitors have even thought of it."

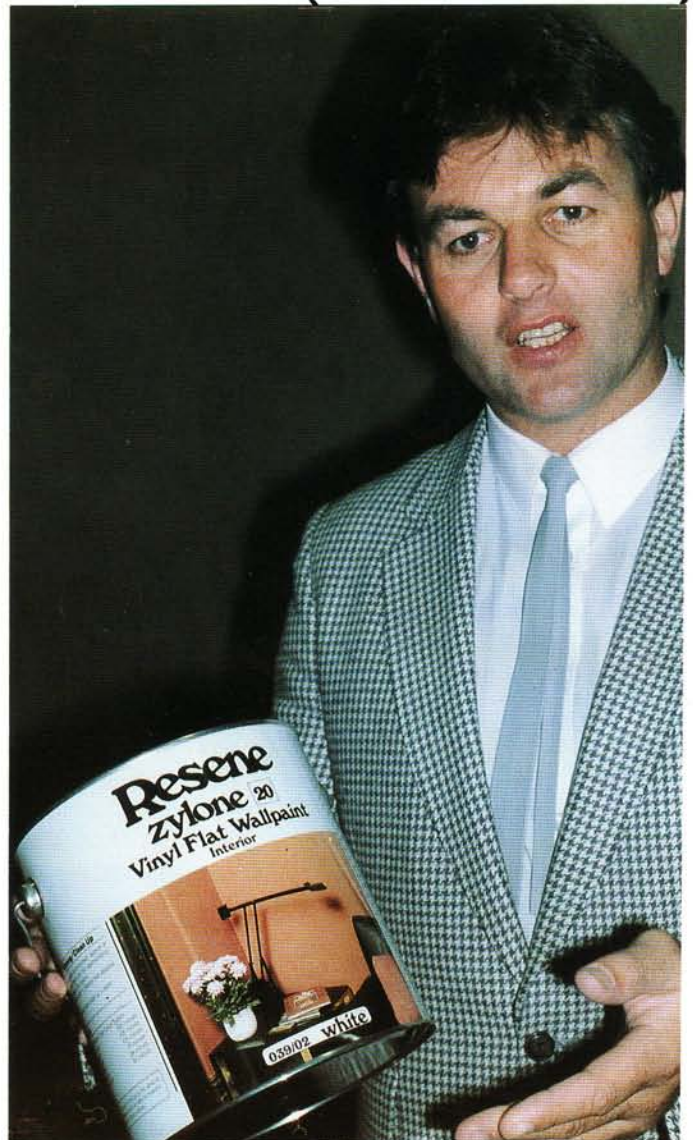
In fact, Zylone 20 is an easily applied wallcovering that is used over new, previously painted, or wallpapered walls and ceilings where a luxurious suede effect is desired.

The finish is so flat that dimensions of walls coated with Zylone 20 become indistinct.

A feeling of depth and space is created.

Zylone 20 is immediately available in the Resene Total Colour System, BSS 5252, and BSS 2660.

Based on a unique combination of resins and pigments which produce a dead flat film, Zylone 20 can also be used on materials such as Pinex, Gibraltar board, fibrous plaster, concrete and plaster and even block and brick work.



Marketing manager John Low with Zylone 20

Top Liners join Resene Team

Two toplineers have joined Resene. John Low takes over as Marketing manager and John Baker becomes Plant manager.

John Low signs on with Resene after heading regional marketing for Dominion Breweries, Central Region.

During his tour with DB John was responsible for much of the retail development in the area by the brewery. It was during his stint with DB that John developed his interest in retail concepts and in consumer product marketing.

A West Coaster, John's career started working in the Greymouth brewery and subsequently he worked for the Greymouth general merchants Griffin and Smith who have now, interestingly enough,

become retail stockists of Resene products.

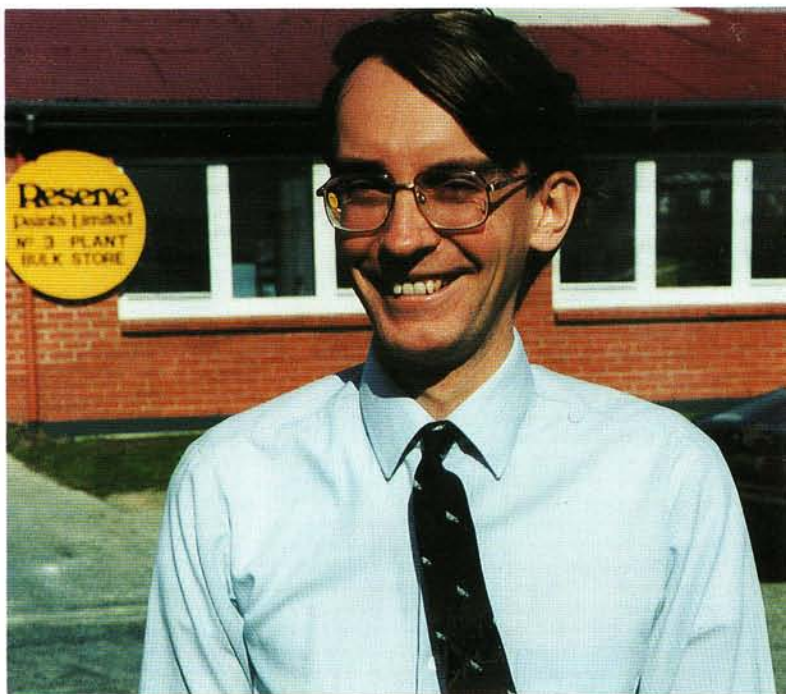
A former West Coast sprint champion, John enjoys a regular workout. He is also a keen scuba diver and rugby league man. He is a five time Kiwi league trialist.

John is married with two daughters.

Resene has again showed its determination to attract the best international talent available with the appointment as Plant manager of John Baker.

John has a Masters Degree in Chemistry from Magdalen College, Oxford.

He then worked for Procter and Gamble for seven years. He was recruited in Great Britain by Resene and has now emigrated to New Zealand with his wife.



Plant manager John Baker.

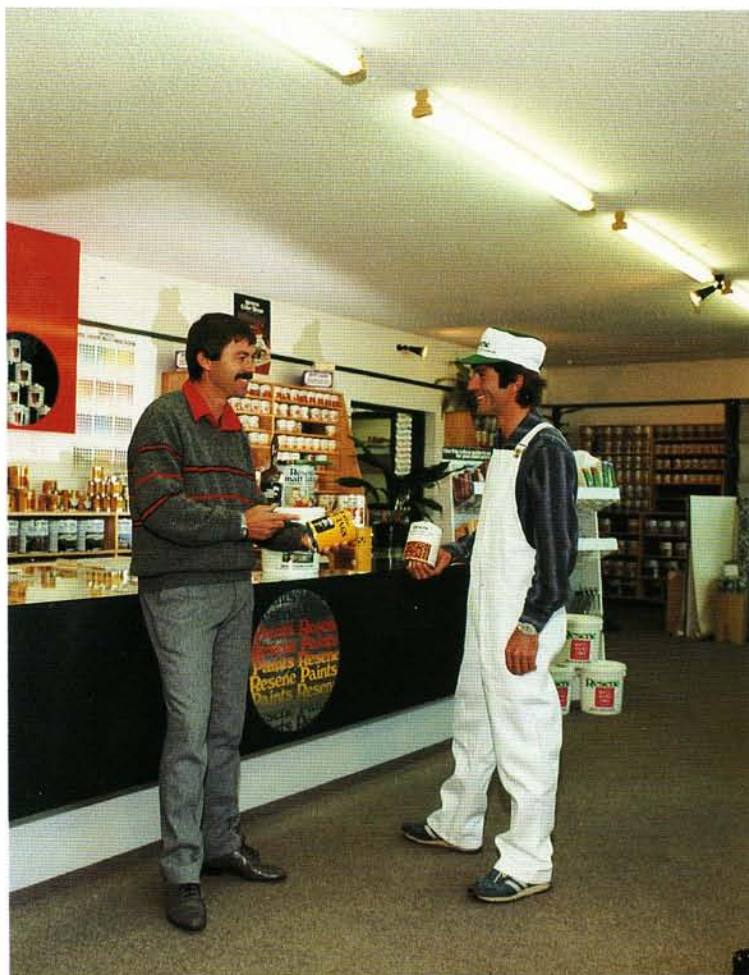
21st Color Shop Tauranga Branch Opens



Resene Paints Tauranga Branch has opened. It is the company's 21st Color Shop. Among the first customers to visit the new shop was George Tzanakos of G.T. Decorators, the well-known Bay of Plenty contracting specialists.

Commented Mr Tzanakos: "I'm delighted to see Resene with such a strong retail presence in Tauranga. They have the high quality product for almost any job. I rarely go past them."

In the photograph George Tzanakos is greeted by Tauranga manager Owen Worth.



1986 Sales Conference Line Up



The theme of this year's annual Resene Paints Sales Conference was Back to Basics. The theme, emblazoned across the conference room at Wellington's Town House reflected the company's objective of continuing innovation while maintaining the very highest standards of quality, reliability and delivery.

The conference itself featured a social emphasis for staff and their wives and a highlight of the conference was the annual dinner and Fancy Dress ball. This year's had an Arabian Nights flavour.

At the annual dinner, Managing director Tony Nightingale presented a number of achievement awards to both individual staff members and branches.

There was some fast footwork by football legends Stu Wilson & Bernie Fraser at the recent DB Spats Wellington Charity Shield event.

The highlight of the afternoon's activities was the Resene Paints Dash between Stu and Bernie

"As a result of this promotion we were able to present the Crippled Children Society with rather more than \$5,000," noted even organiser Bryan park.

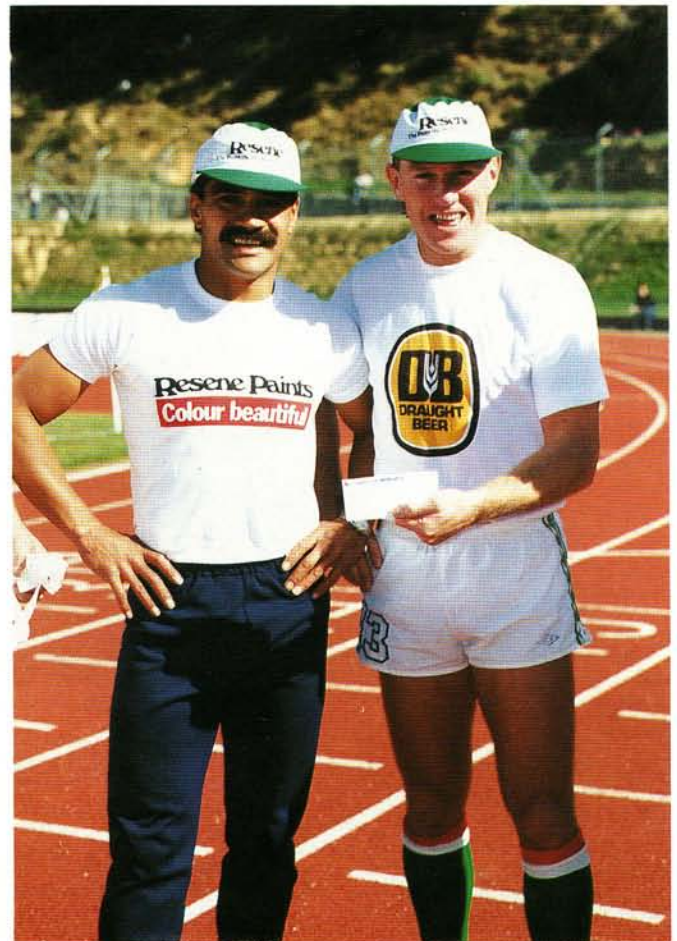
Bernie won the dash by six metres.



Calder Stewart Engineering of Milton use Resene Paints spraying enamel colour "Fern" for their range of silos which encompass a capacity of five to 45 tonnes.

The Calder Stewart silos are a familiar sight throughout the South Island.

Ebony, Ivory Dash for Resene





Underwater World under Resene Paints

Kelly Tarlton's Auckland aquarium is now universally acknowledged as the largest and most comprehensive in the world.

The late Mr Tarlton's creation Underwater World opened its doors in mid January last year.

Visitors travel on a moving conveyor through clear acrylic tunnels on a journey through and under the sea.

It is a journey that beings through crashing surf through the kelp forest and then onward through sandy beds of eels, rays, and other creatures of the sea until the sharks are encountered.

All the exterior coatings of this natural wonderland were supplied by the Auckland Branch of Resene Paints.

The Resene Coatings have been used for the reception areas and the interior viewing area linings.

"It was an exciting project for us," said Auckland Manager John Chambers. "The aquarium is fast becoming one of the major tourist attractions in Australasia."



Settling Tanks Coated

These Catalytic Settling Tanks at the New Zealand Synthetic Fuels installation at Motunui have been sealed with Resene Aquapoxy.

Aquapoxy has met the company's demanding specifications for the tanks which are crucial in the production of synthetic fuels.

The Aquapoxy product was supplied through Resene Paints New Plymouth Branch.