

# Resene

## NEWS

Resene - the paint the professionals use

Resene Paints Limited, P.O. Box 38 242, Wellington Mail Centre. Tel +64-4-577 0500, Fax +64-4-577 0664.  
Internet Home Page [www.resene.co.nz](http://www.resene.co.nz) Technical Advice 0800 Resene (737 363)

## metallic edge

The new \$2 million Nelson Polytechnic Library and Learning Centre heralds an upbeat street frontage to the student campus. Unconventional angles and bold, solid colours have been used in this two-and-a-half level library design, producing a stimulating environment for users.

On the exterior, a cool, harmonious palette of metallic and steely grey colours, including Quartz Zinc panels, is punctuated with Resene Lumbersider tinted to 'Fire' hot terracotta. The exterior paint specification for the library was two coats of Resene X-200 Waterproofing Membrane on the Hardies Titan panels, followed by two coats of tinted Hi-Glo Aluminium or Lumbersider.

The interior Gib Board walls have been coated in Resene Broadwall Acrylic Wallboard Sealer followed by a combination of tinted Hi-Glo Aluminium and Lumbersider in an extensive palette of strong colours including citrus, purple, red and metallic green.

**ARCHITECT:** Athfield Architects; **BUILDER:** Wilkes Construction; **PAINTER:** Derek Borland Painters and Decorators; **RESENE PAINTS:** branch manager for Nelson Richard Haynes.

*Titan wall panels coated in Resene Hi-Glo Aluminium reproduce a sparkling metallic look.  
Inset: Contrasting shades of Resene 'Citron' green and a mix of 'Fire' and 'Monarch' add to the design statement.*



## bold colours set the tone in revamped campus

The centralisation of the Manawatu Polytechnic in Palmerston North into one inner-city site has involved the construction of four multi-level buildings, and the refurbishment and redevelopment of seven existing buildings.

Designed to improve modern teaching methods, the \$40 million expansion and redevelopment will be fully operational for the beginning of the 1999 academic year.

Bold colours perform an important task in the overall design of the complex. A sign-post effect has been achieved by colour-coding the buildings to help students orientate themselves around the campus. A high performance, anti-corrosive paint system was specified for the polytechnic's steelwork, comprising a base coat of thermal zinc followed by Resene Epoxy Primer and topcoated with Uracryl 403. This system is particularly beneficial to the longevity of the semi-exposed steelwork where salt deposits cannot be washed down by the rain.

The interior and exterior concrete frames have been coated in two coats of Resene Lumbersider and the ceilings were finished in Resene Contractor High-Build Acrylic.

**ARCHITECT:** Designgroup Consortium; **BUILDER:** Downers Construction; **PAINTER:** R and P Edmonds, Stevensons Structural, Allan Tong, Tim Sullivan; **RESENE PAINTS:** Palmerston North branch manager Dave Sargent and Wellington engineered coatings consultant John Kilby.

Looking down the internal street in the Manawatu Polytechnic.





# art gallery altering city skyline

New extensions, housing the Len Lye art collection, add a colourful and contemporary dimension to the Govett-Brewster Art Gallery in the heart of New Plymouth.

Rising bold-coloured painted panels, floating between glass, create a vertical statement to the existing building. The vertical panels, constructed from concrete blocks, have been painted with three coats of Resene X-200 Waterproofing Membrane.

Strong colours on the panels have been achieved using an additional two coats of Resene Lumbersider.

**ARCHITECT:** Boon Cox Goldsmith; **BUILDER:** Inglewood Concrete; **PAINTER:** Anton Mora Painting; **RESENE PAINTS:** Taranaki branch manager Ian Anderson.

Neon relief echoing Len Lye's work. ▽



▲ Three shades of grey are used to create colour depth to St David 2.

# thinking outside the square

What could have been just a big pre-cast concrete facade, has been brilliantly animated with colour and subtle tonality. Designed for flexible use, the new four level, \$4.5 million St David 2, on St David Street in Dunedin, has recently opened its doors to University of Otago departments and tenants associated with the campus. Different shades of grey that grace the facade have been achieved by using a variety of zinc panels, sheet steel painted in Resene Imperite 503 Blast Grey and pre-cast panels painted in Lumbersider tinted to 'Jon' charcoal grey. The treatment mimics the colour and texture found in the stone and slate used on the nearby CRI and University of Otago registry buildings. The colour depth and textural effect have been further enhanced by shadow patterns created by perforated white sunscreens.

Architect Tim Heath required a paint system for the steelwork that would retain the natural look and texture of freshly blasted steel while providing the ultimate protection against corrosion.

In developing the paint system for the steelwork, Heath, assisted by Nelson Dickson for Resene Paints, specified Resene Zinc Silicate Primer followed by Fast Dry, High-Build Epoxy for corrosion control.

A topcoat of Resene Imperite 503 Blast Grey was subsequently applied, reproducing the look of abrasive blasted steel.

Exterior pre-cast concrete panels meant sealing the substrate first with Resene Smooth Surface Sealer, providing the adhesion for X-200 Waterproofing Membrane while Zylone Sheen and Lustacryl were used in the interior teaching zones. Resene Aquapoxy and Uracryl 402 were specified in the ablution areas.

**ARCHITECT:** Designgroup Salmond Anderson Heath; **BUILDER:** Naylor Love Construction; **PAINTER:** James Wren & Co.; **PHOTOGRAPHY:** John Hawkhead; **RESENE PAINTS:** Southern branch manager Nelson Dickson.

# mediterranean

Washed-out sandstone textured walls in subdued colours speak of a warm Mediterranean water edge lifestyle. That's what you will find at the St Moritz Hotel - a new, 144-room Novotel property in downtown Queenstown.

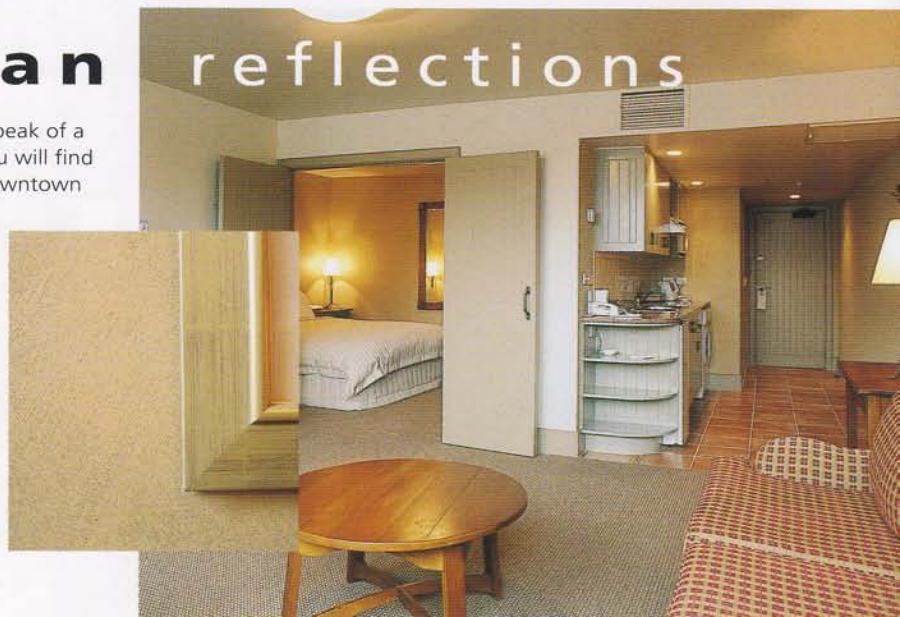
The simplicity of the sandstone textured interior walls has been achieved by using Resene Broadwall Acrylic Wallboard Sealer overcoated with Resitex Superfine. Resene Resitex Superfine, Standard and Coarse allow a broad range of textured design options, from the traditional Tuscan or French Provençal-style through to the sophisticated post-modern inner-city home.

**ARCHITECT:** Mason & Wales Architects Ltd; **BUILDER:** Naylor Love Construction; **PAINTER:** James Wren & Co.; **RESENE PAINTS:** Queenstown sales representative Annette Gin.

Main Photo: St Moritz capturing a Mediterranean look. ▸

Inset: The textural effect of Resene Resitex Superfine. ▸

# reflections





# a pool of ideas

Colour has been used in an innovative and artful way to strengthen and highlight the form and space in a new two-storey Marlborough house, and pool complex.

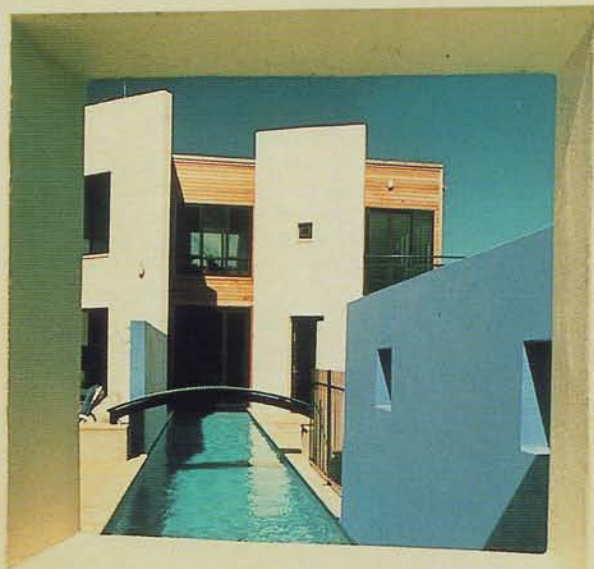
The plaster walls, which flank the pool, provide a solid and permanent look. The walls have been finished in two coats of Resene X-200 Waterproofing Membrane and an additional two coats of Lumbersider have been used on selected walls to achieve bold planes of colour.

Resene Swimming Pool Paint, a chlorinated rubber formulation, has been directly applied to the pool's concrete surfaces by roller.

A single pack product, Resene Swimming Pool Paint provides a tough, long-lasting and durable surface.

**ARCHITECT:** Abacus Design; **BUILDER:** Graeme Valk; **PAINTER:** Kevin Cresswell; **RESENE PAINTS:** Blenheim sales representative Bryan Newman.

A winning house in the 1998 NZIA/Resene Branch Awards.



# city living

The fashionable address of the new purpose-built St Paul's Apartments in Thorndon, Wellington, has been matched with an equally fashionable and dramatic interior.

Along the internal street, connecting three of the four apartment building blocks, a variety of colours and contrasting finishes have been used to help create the illusion of movement.

On the ceiling of the street, Resene Hi-Glo Aluminium, tinted to three specially mixed colours, provides a shimmering effect, while on the walls the textured sandstone effect of Resitex Superfine has been used. This has the added ability of covering-up any imperfections that may occur on pre-cast concrete walls.

Working with a background of painted deep-sea-blue walls and glass in the stairwells, steelwork has been coated in Resene Micaceous Iron Oxide to provide an overall impression of added space, solidity and strength.

Apartment types range from a single level studio through to double level two and three bedroom units to the larger penthouse units at the upper levels. Background colours have been chosen by the owners allowing them to personalise their apartments by selecting feature colours from a broad palette ranging from bold through to more pastel Resene tones.

**ARCHITECT:** Athfield Architects; **BUILDER:** Ebert Construction for stage 2; **CONSULTANT DESIGNER:** Clare Athfield for Last Paddock; **DEVELOPER:** Newcrest Holdings; **PAINTER:** Ron Baré; **RESENE PAINTS:** Wellington architectural representative Mike James and architectural services representative Dave Clarkson.

The final impact in the stairwell is the result of a colour scheme based on subtlety and boldness.

# makeover continues company's new look

Foodtown's re-imagining programme of 31 stores nation-wide, reinforces the supermarket's offer as a fresh, modern and convenient place to shop.

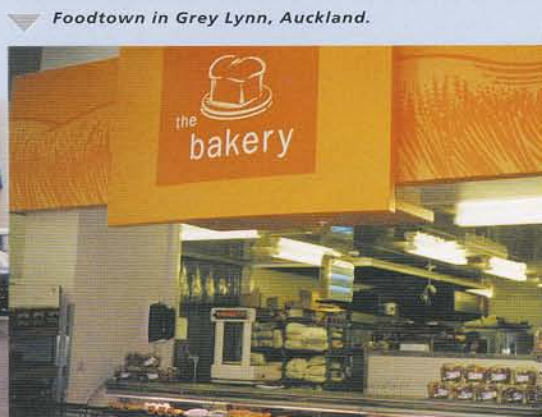
The utilisation of the sunburst yellow logo and crisp white logo-type in a sharp blue background are the new exterior corporate colours for Foodtown. The colour of the sunburst logo is a super durable yellow, specially manufactured by Resene Paints for Foodtown, as typical yellows did not reach the client's exterior durability requirements. Inside, the panels above the aisles have been colour-coded to help shoppers determine the wide variety of products on sale. Interior painting took place outside shopping hours. This meant the paint selected had to be fast drying and low in odour, as well as durable and easy to clean, allowing visitors to shop as usual without experiencing unpleasant paint fumes.

Daryl Spinetto for Resene Paints specified Lustacryl water-based enamel on the walls which is equal in performance to traditional solvent-based enamel paints, with all the advantages of acrylics. Resene Lumbersider was used on the interior panels and Hi-Glo was used on the exterior for its excellent durability.

**ARCHITECT:** Tse Group; **PAINTERS:** Programme Maintenance Services for the exterior repaint of Foodtown in Sunnynook and G. Matassa Coatings for the interior repaint of Foodtown in Grey Lynn; **PROPRIETOR:** Progressive Enterprises; **RESENE PAINTS:** Auckland business development manager Daryl Spinetto.



Foodtown in Sunnynook, Auckland.



Foodtown in Grey Lynn, Auckland.



## blue horizons

**A** fresh, vibrant colour scheme provides the perfect backdrop for Christchurch interior designer Lynne Abbot's collection of art and glasswork in her new Cashmere home. "When it comes to finding inspiration for colour there is no strict set of rules," says Lynne who chose her favourite colour blue for her living and lounge area - Resene 'Paris M' mixed in equal parts with 'Deep Koamaru'. Lynne, who has spent 16 years as an interior decorator says, "I use only Resene Paints because my clients can be certain the colour they're seeing is the colour which will be used."

**ARCHITECT:** Ian Krause Architects; **BUILDER:** Andrew Rollinson Builders; **INTERIOR DECORATOR:** Lynne Abbot; **RESENE PAINTS:** Christchurch architectural representative Henrietta Savill.

*Lynne Abbot's home filled with brilliant colour.*



## a little bit of olde England



**T**he history of Wanganui's little bit of olde England - the Rutland Arms Inn - reads like a fairy story. Saved from two fires and the clutches of demolition, this "damsel in distress" has been restored and extended with help from Resene. Restoration work began in 1992, when the gallant Bob William bought the derelict Victorian building and turned it into a boutique style hotel, complete with bar, restaurant, accommodation suites, shops and commercial offices.

The rusty cast-iron lattice work on the old verandahs has been thoroughly waterblasted, and two coats of Resene Rust Arrest have been worked well into the surfaces with a brush before topcoating with Hi-Glo. Hi-Glo, Resene Paints' best performing exterior decorative paint, was also used on the roofing and weatherboards. Interior walls have been ragrolled creating a crushed velvet effect. This distinctive look has been achieved by applying two coats of Resene Zylone Sheen to the walls followed by ragrolling Lumbersider diluted with Resene Paint Effects Medium.

**ARCHITECT:** Dickson Lonergain Architects; **PAINTER:** Quality Decorating; **OWNER:** Bob William; **RESENE PAINTS:** Wanganui sales representative Neville Rowan.

*The Rutland Arms restored to its former glory.*

## long term corrosion control

**F**letcher Challenge Forest has upgraded its Kaingaroa Processing Plant spray booth to a new, more efficient design supported by Resene Paints' high performance coating technology for long-term corrosion control.

*From left: Paul Barker from Kaingaroa Processing Plant, Mike Haua from Haua Engineering, Jay Menzies from Kerslake and Partners, Wally Kappely from Kaingaroa Processing Plant, Albert Rau from Haua Engineering, Mark Jones from Kerslake and Partners and Resene Paints Rotorua sales representative Tony Taylor.*



The corrosive nature of the anti-fungal spray fluid, which is used to prevent fungus growth and staining on freshly debarked radiata logs, meant that materials and surface coatings had to be completely resistant to corrosion.

Non-corrosive stainless steel was used for the manufacture of the spray booth's rollers and lining. The framing, made from mild steel, was fully prepared by blasting, and subsequently coated in Resene Zinc Silicate Primer followed by Epoxy Primer and topcoated in High-Build Acrylic Urethane in the chosen colour, 'Tasman Green'.



## warm fronts and wet edges

**W**ater-borne paints dry principally through the loss of water, and anything that speeds up that loss will speed up the drying - and that is not always beneficial.

Mild, still weather with high humidity is ideal. This allows the paint to flow beautifully, the leading edge to remain wet for easy melding of the next brush load, and the film to pack and consolidate into its toughest form.

Porous substrates, and hot, dry and windy weather have the opposite effect, and can lead to 'ropy' films with poor lapping properties. The pre-dampening or sealing of porous substrates; the maintenance of a thick leading edge and the use of Resene Hot Weather Thinners can improve these effects if painting must be done under these conditions.