

Resene

NEWS

Head Office, Vogel St, Lower Hutt, P.O. Box 38 242, Wellington Mail Centre, New Zealand. Tel +64-4-577 0500, Fax +64-4-577 0600. ColorShops throughout New Zealand

'Mega' Resene Look for New Appliance Super Store

A new retail look for Christchurch's Moorhouse Avenue has resulted in this striking showroom housing Southpower's new appliance megastore.

Designed by architect Bill Skews, of Skews Hey Ussher Architects, the building's dramatic Resene paint job helps it stand out from its local retail neighbours.

The bulk of the exterior is painted in three graduated shades of ochre, contrasting with two, central, primary colours — all in mega-durable Resene X200.

This is just one of a number of dramatic Christchurch projects featured inside this issue of Resene News.



Architect Bill Skews and the new, colourful, Southpower Max Appliance Megastore. ▶

Facelift for New Plymouth Landmark

Refurbishment of the TSB Bank, a key downtown building in central New Plymouth, was a massive undertaking, involving a variety of specialist contractors using Resene products.

Decorative Sprayed Finishes looked after the aluminium windows with Vinyl Etch and Imperite 503, while Smooth Surface Sealer, Imperite 315 and Imperite 503 were used on the fibreglass spandrels.

Gunac Coatings was responsible for treating the Hardiflex panels over concrete (specified by architect Boon Cox Goldsmith Jackson) with QD Primer and two coats of Sonyx 101.

◀ The TSB Bank building in New Plymouth fully refurbished in TSB's corporate colours.

From Water to Wine (and food)

Blenheim's former Marlborough Catchment Board building has a new lease of life as The Marlborough Hotel, a stylish 28-bedroom hotel and conference complex.

Architect Neil Charles Jones was looking for a striking effect and in consultation with Resene representative Bryan Newman specified a warm colour scheme using Resene's Savannah, Corooba and Salsa throughout the hotel.

Colour washing and sponging have created a dramatic effect as has the two pot urethane, Uracryl, used on the imposing entranceway.

Blenheim's smartest new accommodation option, The Marlborough Hotel. ▶



Resene - the paint the professionals use

Close-up on Christchurch



Suburban Style

The popular new place to meet in Christchurch's suburbs is Misceo Cafe Bar.

The spacious complex, designed by Alec Bruce of Wilkie Bruce Architects has a friendly, natural appearance, says Resene architectural representative Henrietta Savill. Its bold straight-lined exterior has been applied with Resene X200.

▲ Outside a Christchurch popular suburban meeting spot, Misceo, from left, architect Alec Bruce, owner Frank Pipe and Resene architectural representative, Henrietta Savill.

Communicating Colour

An integral part of the Teltrac Communications building design in Hornby was its rich, contrasting colour scheme.



Designed by Willis and Associates Architects, the project also required a paint which featured long life and graffiti resistance.

The paint chosen was Resene's Uracryl 403, applied by J B G Delis painters, with striking results.

◀ Jerry Delis of JBG Delis (left) and Gavin Willis of Willis Associates Architecture Ltd, display their combined efforts.

Resene Scores Again

Anyone who has been a spectator at Lancaster Park on a wet and windy day knows how tough the elements can be.

So when architect Gerald Austin of Austin Architects came to specify the paint for the Number 6 stand and corporate boxes at the Park, he recommended Resene.

The system used was a combination of Resene X200 for waterproofing and Uracryl for long life - after all, when you're painting a building the size of a football stand, you don't want to have to do it twice.

Architect Gerald Austin and Resene architectural representative Henrietta Savill ▶ at the entrance side of the new stand and corporate box block at Lancaster Park.

The show goes on — in blazing colour

Back in 1929 when architect H Francis Willis designed the Repertory Theatre building in Christchurch's Kilmore Street, he left a legacy not only to the city, but also to his son.

Gavin Willis of Willis and Associates was called in when the Spanish Mission-influenced building needing refurbishing 66 years after his father made the original plans.

Now, with colours specially mixed by Resene for the theatre in Uracryl 403, the show can go on.



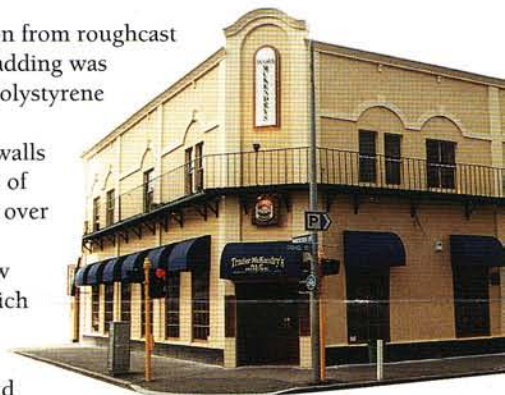
Christchurch's Repertory Theatre gets the second generation treatment. Resene ▲ architectural representative Henrietta Savill compares notes with architect Gavin Willis, son of the building's original designer, who was responsible for the building's refurbishment.

Trendy transformation

There's life in the old pub yet, found Christchurch architect James de Malmanche who, with the help of painter Craig Ling and Resene products, transformed the old Cantabrian Tavern into an upmarket bar Trader McKendrys.

The transformation from roughcast over weatherboard cladding was accomplished using polystyrene panels and plaster to remodel the exterior walls followed by two coats of Resene Zylone 20 flat over existing paintwork.

The result is a new image for the pub which was once partly owned by All Black Fergie McCormick and has a reputation as the "Rugby Pub" in Christchurch.



▲ Trader McKendrys in Christchurch: new life in the old pub.



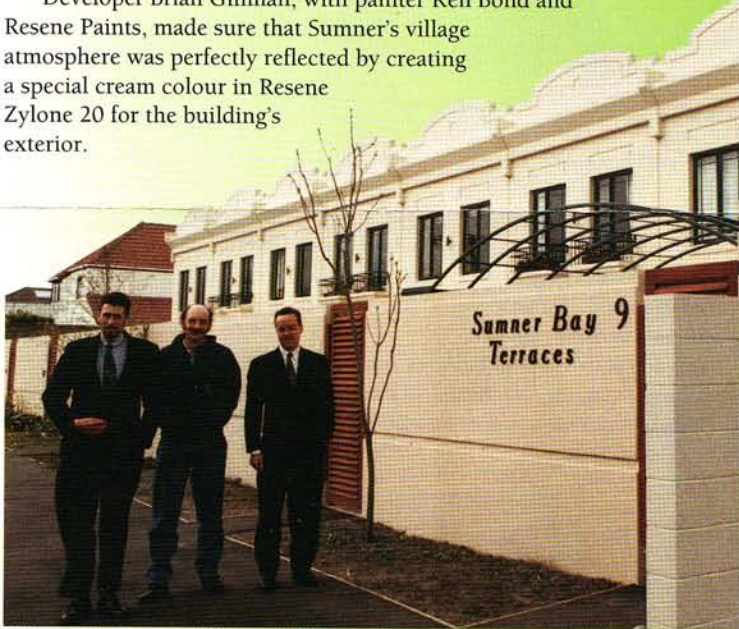
church

Resene ensures classy village atmosphere

The elegant plaster look of this apartment block in the Christchurch beach village suburb of Sumner was created with a little help from Resene — and an eye for colour.

Sumner Bay Terraces, designed by Alan Reay Consultants, is the largest block of new apartments in the suburb, housing 16 new units.

Developer Brian Gillman, with painter Ken Bond and Resene Paints, made sure that Sumner's village atmosphere was perfectly reflected by creating a special cream colour in Resene Zylone 20 for the building's exterior.



▲ Tony Walter, Resene rep; Ken Bond, painter; and Geoff Banks of Alan Reay Consultants.

Viva Vickers Viscount

Restoring a 1959 Vickers Viscount, *The City of Christchurch*, has become a labour of love for 30 retired Air New Zealand engineers.

"The plane has been at Christchurch's Ferrymead Historic Park since 1975 and was returned to Air New Zealand after deteriorating into a state of disrepair," says Resene representative Tony Walter.

Resene Vinyl Etch primer, enamel undercoat and a Supergloss Enamel (yet to be applied) are part of the restoration programme which will be completed by 1997.



▲ A former NAC commercial carrier, this 1959 Vickers Viscount is being fully restored by a team of dedicated retired Air New Zealand engineers. From left: Tony Walter (Resene service representative), Ken Secker, Cyril Hancock, Laurie Smith, Murray Muir, Jim Boddy, Garry Earnshaw and Bernie Rathbun.

Very Deco-rative

The Art Deco architecture for which Napier is recognised worldwide has been echoed in a new private home in the city's suburbs.

Contractors Eric Wigg of Permanent Coatings and Ray Pearson of APACS were particularly impressed with the performance of the exterior system used: a polystyrene plaster system, Insulclad, with one coat of acrylic as a sealer coat and two coats of Resene Contractor.

"This is a specialist product, used for its low sheen finish and good opacity, that is, hiding power, of the substrate," explains Resene's Mark Aschoff.

Resene's flagship acrylic Resene Zylone Sheen was used on Gib board throughout the entire home's interior.



▲ Art Deco 1995-style. From left Eric Wiggs (Permanent Coatings Ltd), Resene rep Mark Aschoff and Ray Pearson of APACS.

Colour Award for Heretaunga house

As a government building accommodating a number of offices, Heretaunga House in Hastings, until recently, was a tired looking, gloomy old building in creams and browns.

But with the design by Hawke's Bay architect Paris Magdalinos applied by Gary Brown Painting contractors, the building caught the eye of judges in the recent NZIA Resene Regional Architecture Awards and won a Resene Colour Award.

Resene's X200 was used on concrete panels and blocks with Lumbersider top coats to achieve darker colours. Timberlock, and two coats of Lumbersider were used on cedar screens and planters and Vinyl Etch and Uracryl 403 onto aluminium windows and doors.

The award winning Heretaunga House with (inset) ▶ from left, Resene rep Graeme Adeanz, Gary Brown and Graham Koti of Gary Brown Painting Contractors and Simon Clarkson of Paris Magdalinos Architects.



Teamwork helps bowling club

Members of Nelson's Maitai Bowling Club provided voluntary labour to keep costs down on almost every element of building their new complex designed by architect Neville Malcolm.

"Nelson painter, Graeme Stack did the painting using approximately 1,000 litres inside and out," says Resene Nelson representative Richard Haynes.

"The project is a credit to all members," Richard says. "Their labour helped keep costs down for the project which is worth well over \$1 million."

From left: Resene representative Richard Haynes, Tom Hawes, bowling club president and painting contractor Graeme Stack outside the new Maitai Bowling Club complex in Nelson. ▶



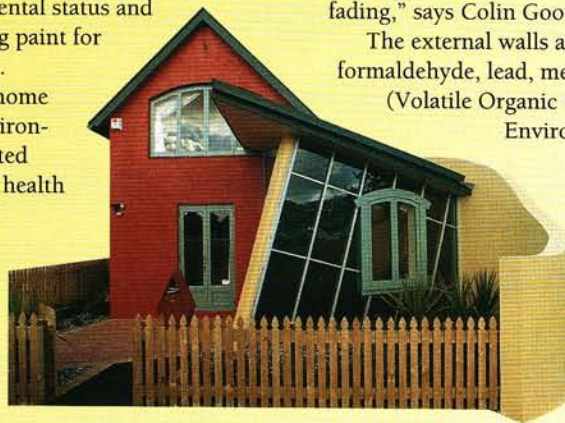
Resene enhances Wellington's Eco House

Paint colour, solvent level, environmental status and durability were all key factors in choosing paint for the Wellington City Council ECO House.

The Newtown ECO House is a showhome which demonstrates how a variety of environmentally friendly and conservation oriented products can be brought together for the health and well-being of the occupants.

The colours were chosen to be both aesthetically pleasing and durable.

"We had to look at the potential of each colour, how it would cope over time, and how best to combat natural



▲ The Wellington City Council ECO House: environmentally friendly Resene products were used inside and out.

fading," says Colin Gooch, Resene's technical director.

The external walls are painted with coatings that contain no formaldehyde, lead, mercury or any other heavy metals. Their VOC (Volatile Organic Compound) paint levels are all well within Environmental Choice New Zealand guidelines.

"All the paints used on the ECO House are a mixture of our standard environmentally friendly products and developmental products. They are all currently available or soon to be available in the marketplace," Mr Gooch says.

Environmentally-friendly odour-reduced varnish

The look of freshly varnished doors, panels and furniture has great appeal.

What is not so appealing, is the smell of solvents as the varnish dries or cleaning sticky brushes when the job is finished.

Now, however, Resene Paints has developed a water-based alternative to turps-thinned oil-modified varnish which can be washed up in water and which gives off low odour on application compared with solvent-based varnishes.

Called Aquaclear, this urethane acrylic varnish is suitable for a wide variety of uses, including furniture, panelling, doors, desks, skirtings, parquet, solid timber, veneers, cork and fibre and particle boards.

Aquaclear has already been used in the Wellington City Council's Eco House and has been used extensively at the new Auckland Casino.

More than 3000 litres was used on doors, windows and joinery at the casino where architects Craig Craig Moller stipulated from the outset of the project they would use environmentally friendly products wherever possible.

Aquaclear dries in 30 minutes and can be recoated in two hours.

While Aquaclear can be used on floors, it is not suitable on those floors subject to high traffic. Resene Polythane should be used here.



Resene's new, environmentally friendly, water-based varnish, Aquaclear. ▶

Resene supports CMS centres

Recent research has revealed a major trend in people choosing to build their home on a "labour only" basis.

"This means consumers are having much more influence on the selection of building products, including paint systems," says Resene brand manager Blair Lill.

Construction Marketing Services, recognising the need for people to see what is available under one roof, has established display centres in Auckland, Wellington, Christchurch and Sydney.

Building suppliers and manufacturers, including Resene, have a display showing their products and systems. The Resene display has items such as colour cards and information on Resene's latest products for customers to take away with them, samples from the Resene Architectural Sample Box, the Colour Match System as well as the giant Resene Test Pot.

"Increasingly, architects are sending their clients to the CMS centres," Blair says. "They appreciate the ready access for their clients so ideas can be developed with the very latest information".

The centres are open Monday to Friday 8.30am - 5pm and Saturday 10am to 2pm.



▲ Resene stands at CMS Centres in Auckland, Wellington and Christchurch provide information and advice about the use of Resene paint systems.



the paint the professionals use