

★★★ Difficulty level ★easy ★★moderate ★★★challenging

Resene kids art with Mark Rayner – 14

### You will need:

- Balsa wood model plane
- Paintbrushes
- PVA glue
- Resene Quick Dry Acrylic Primer Undercoat
- Resene testpots in the following colours: Resene Alabaster, Resene Bright Red, Resene Space Cadet and Resene Turbo



#### Step one

Following the manufacturer's instructions, assemble the balsa wood plane, fixing the pieces into position using the PVA glue. Leave for several hours so the glue can dry thoroughly.



#### Step two

Apply one coat of Resene Quick Dry Acrylic Primer Undercoat to the model plane. Allow to dry.



#### Step three

Paint the body, wheel supports and wing struts of the plane with two coats of Resene Alabaster. Allow to dry.



#### Step four

Paint the wings and lower tail fins of the plane with two coats of Resene Space Cadet. Allow to dry.



#### Step five

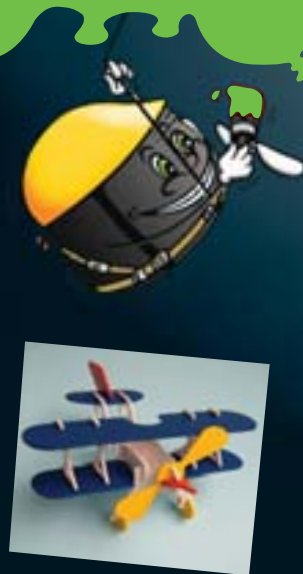
Paint the nose and upper tail fin of the plane with two coats of Resene Bright Red. Allow to dry.



#### Step six

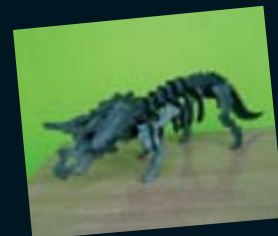
Paint the propeller and wheels of the plane with two coats of Resene Turbo. Once dried, it's time for takeoff!

Transform a balsa wood model plane into something special with the help of a few Resene testpots.



#### Top tip:

If the edges of the balsa wood are a bit rough, sand them smooth with some fine sandpaper before assembling the plane.



#### Here's another idea:

Transform a model dinosaur using Resene IsoBar – available as part of the Resene Art Action Metallic range.

For more ideas and inspiration visit your local Resene ColorShop or [www.resene.co.nz](http://www.resene.co.nz) or [www.resene.com.au](http://www.resene.com.au).

Check out our special Artists section online [www.resene.co.nz/artists/artists\\_canvas.htm](http://www.resene.co.nz/artists/artists_canvas.htm) or [www.resene.com.au/artists/artists\\_canvas.htm](http://www.resene.com.au/artists/artists_canvas.htm).