

## DIY PROJECT

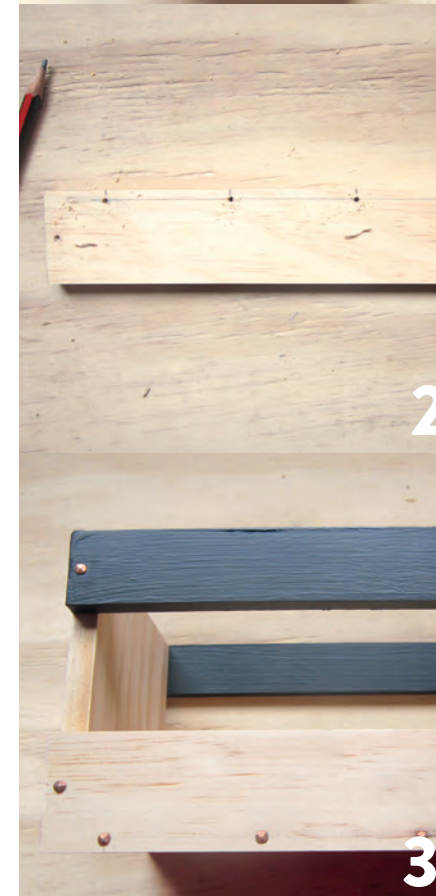
Proudly supplied by

**Resene**

the paint the professionals use

# WINDOWSILL PLANTER BOXES

*Rose Hughes shows how to make portable planter boxes to sit prettily by your kitchen window or liven up any sunny spot.*



## MATERIALS

**You will need:** • 1.8m - 135mm x 10mm pine for base and sides  
• 1.8m - 30mm x 10mm pine for top side bar  
• 1.8m - 40mm x 10mm pine for lower side bar  
• Terracotta or zinc pots to fit  
• Pencil & tape measure  
• Nails – brass panel pins or I found some decorative bronze rose head nails left over from our house project  
• Drill and bits  
• Wood glue  
• Clamps  
• Hammer  
• Resene Blackboard paint, Resene Aquaclear varnish & paint brush  
• Chalk  
• Herbs / plants

**Cutting list:** To make x 2 planter boxes.  
• Base: 2 x 400mm  
• Sides: 4 x 120mm  
• Top bar: 4 x 420mm  
• Lower Bar: 4 x 120mm

**Cost: \$55 excluding paint, pots & plants**

**1** Measure and cut base, side panels and side bars. Pre-drill nail holes, glue and clamp sides to the base until dry. Add decorative nails.

**2** Pre-drill, glue and nail the lower side bars into position so it is level with the bottom edge of the base.

**3** Undercoat and top coat the top side bar with blackboard paint. Glue and nail the top side bar into position.

**4** If preferred you can stain the bare timber using your choice of colour, then overcoat with varnish. ❀

PHOTOS: ROSE HUGHES