

# HARVEST BASKET

This quick and easy DIY project will help you harvest and wash your veges this summer.

WORDS & PHOTOS KLAUDIA KRUPA

## You will need:

### MATERIALS

- 18mm timber dowel, at least 390mm in length
- 1640mm length of 45mm x 19mm timber
- 460mm length of 230mm x 19mm timber
- 30mm screws
- Plastic trellis mesh cut to 450mm x 620mm
- Resene Waterborne Woodsman penetrating oil stain testpot in your choice of colour (we used Resene Bark)

### TOOLS

- Drill (with 3mm and 19mm drill bits)
- Drop saw
- Paintbrush
- Pencil
- Ruler
- Staple gun
- Tape measure



BROUGHT TO YOU BY

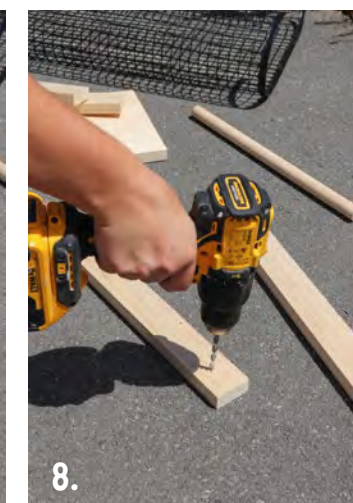
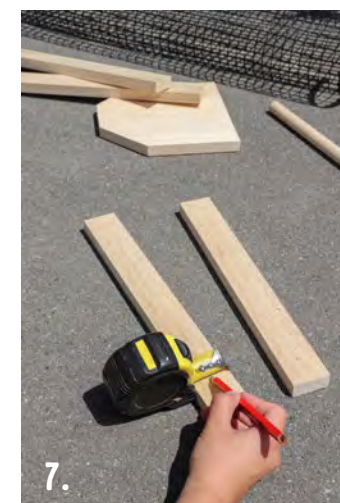
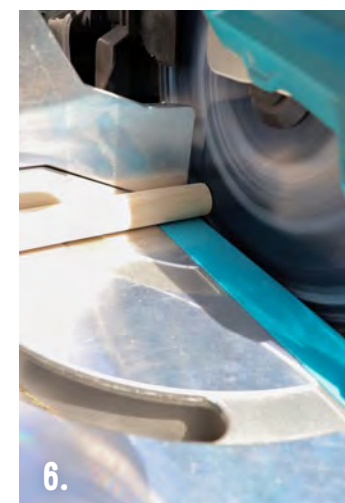
**Resene**

the paint the professionals use



### Top tip

If you don't have a drop saw you could use a hand saw or circular saw to cut your timber to size.



### STEP ONE

Measure and mark up two 230mm lengths on the 230mm-wide timber.

### STEP TWO

Using a drop saw, cut the timber to make the two side panels.

### STEP THREE

Mark two points, 70mm from each corner along the bottom edge of each side panel, and mark two further points 70mm

up the sides from the bottom corners. Draw lines to connect the points at each bottom corner of the two side panels.

### STEP FOUR

Set the drop saw to 45 degrees and cut along the two marked lines on each side panel.

### STEP FIVE

Cut the 45mm-wide timber into two 450mm lengths and two 370mm lengths.

### STEP SIX

Cut the timber dowel to 390mm.

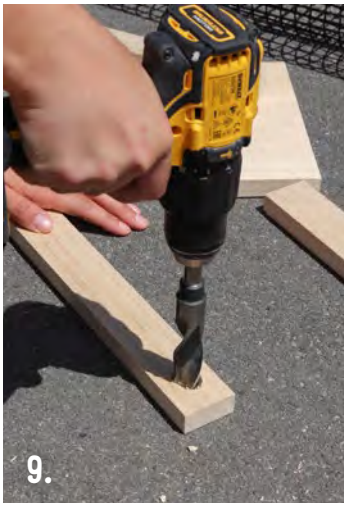
### STEP SEVEN

On both the 370mm lengths, mark a middle point on the timber, 35mm down from the top.

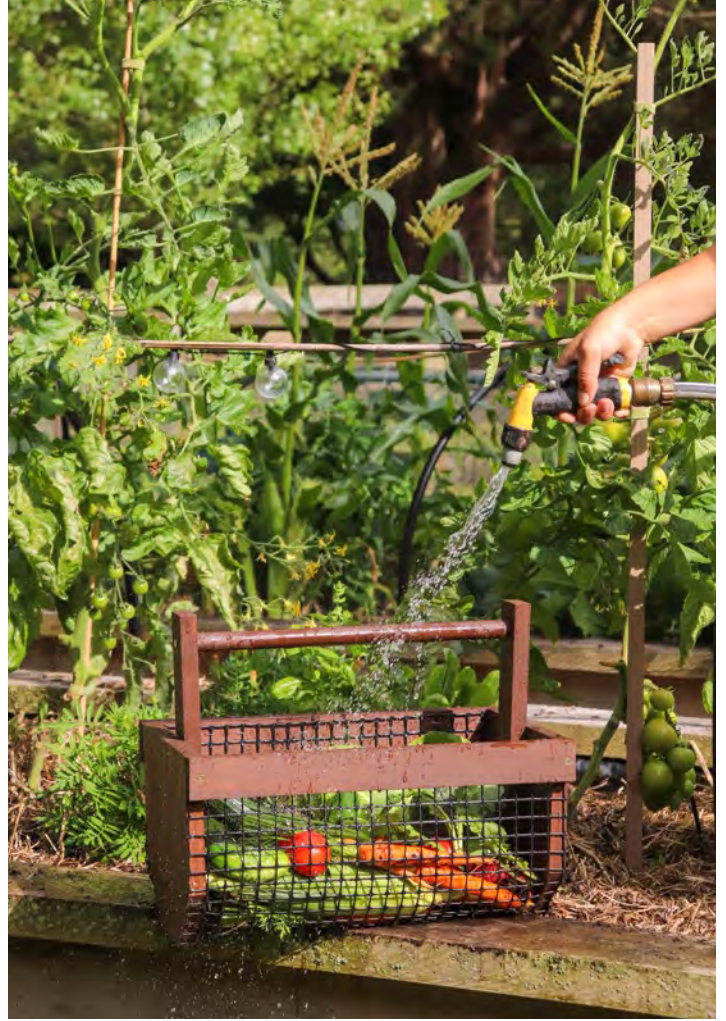
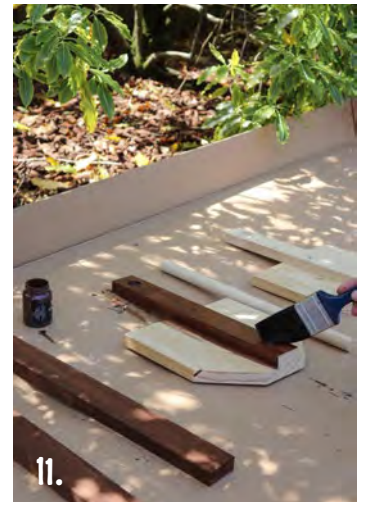
### STEP EIGHT

Use the 3mm drill bit to drill a pilot hole halfway into the timber, on the marked points.





**Here's another idea**  
 Rather than using a wood stain, you could use Resene paint testpots to add a splash of colour to your basket.

**STEP NINE**

Using the pilot holes as a guide, use the 19mm drill bit to create circular indents in both 370mm lengths. Be careful not to drill right through. When you've finished, check that the dowel fits in each indent.

**STEP TEN**

Screw a 370mm length of timber onto each side panel at the centre of the base edge, with the indent facing inwards.

**STEP ELEVEN**

Apply two coats of Resene Waterborne Woodsman penetrating oil stain to all the wooden pieces, allowing to dry between coats.

**STEP TWELVE**

Staple a 450mm length of timber to each of the 450mm-long edges of the plastic trellis mesh.

**STEP THIRTEEN**

Screw the basket together as shown, making sure the indents and the mesh are both facing inwards.

**STEP FOURTEEN**

Slot the dowel into place and secure with a screw on each end.

**STEP FIFTEEN**

Add a few staples along the side panel edges to hold the plastic mesh in place.

**Resene**  
 the paint the professionals use

For more on paints and stains phone 0800 RESENE (0800 737 363) or visit your Resene ColorShop [resene.co.nz/colorshops](http://resene.co.nz/colorshops)