

DIY

# Bamboo Bean Frame

Learn how easy it is to create a simple bamboo growing frame – perfect for supporting new-season runner beans.

WORDS & PHOTOS MARK RAYNER

BROUGHT TO YOU BY



the paint the professionals use

## You will need:

- 30mm galvanised nails
- 30mm exterior screws
  - 100mm nails or screws for fixing frame to fence
- 20mm x 45mm treated timber (approx 11m)
- 10 x bamboo canes
- Drill with 3mm drill bit
  - Hammer
  - Marker pen
  - Pencil
  - Sandpaper
  - Screwdriver
  - Tape measure
  - Paintbrush
  - Paint stirrer
- PVA glue (exterior)
- Resene Waterborne Woodsman tinted to Resene Totem Pole
  - Saw
  - Set square



1.



2.



3.



4.



5.



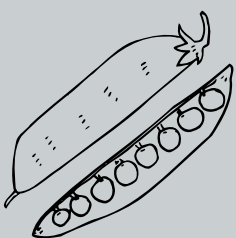
6.



7.

## TO GET THE LOOK

The background fence is stained with Resene Waterborne Woodsman tinted to Resene Grey Green.



### STEP ONE

Measure and mark the 20mm x 45mm timber into six 1.8m lengths.

### STEP TWO

Cut the lengths of timber to size using the pencil marks as a guide.

### STEP THREE

Smooth any rough edges with sandpaper.

### STEP FOUR

Run a line of PVA glue along the edge of two pieces of the timber, as shown.

### STEP FIVE

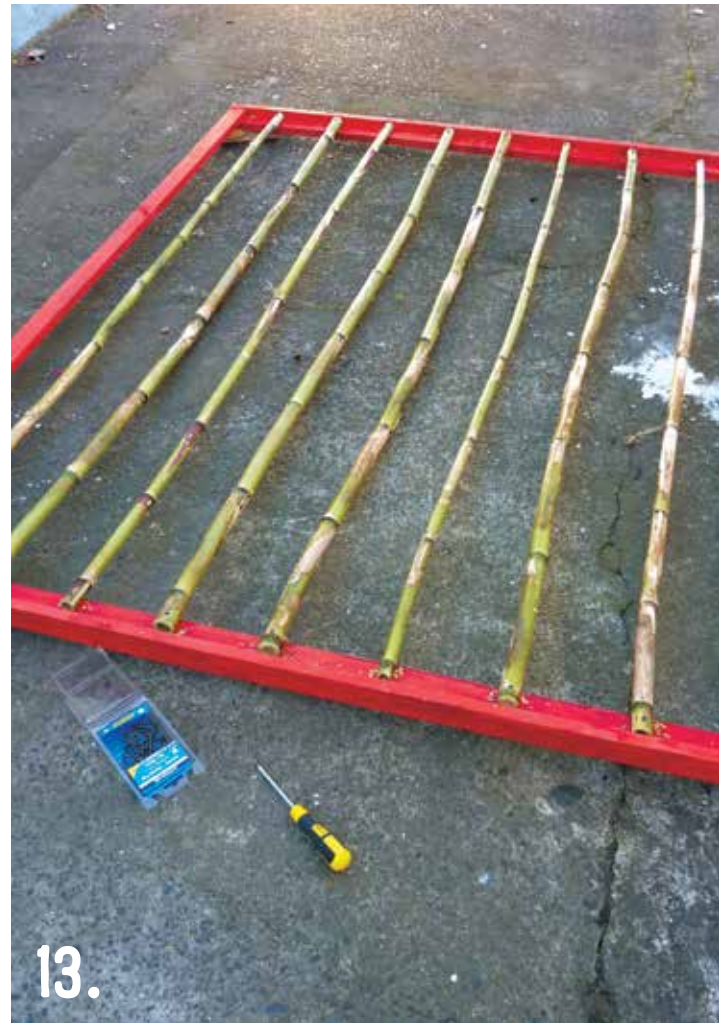
Fix a second piece of timber to each with 30mm nails, as shown. This will form the top and base of the frame.

### STEP SIX

In the same way, attach the remaining two pieces of timber to the top and base to form the sides of the frame. Use the set square to ensure corners are at 90 degrees. Allow glue to dry.

### STEP SEVEN

Carefully stir the Resene Waterborne Woodsman.



**STEP EIGHT**

Apply one coat of Resene Waterborne Woodsman to the back of the frame and allow to dry.

**STEP NINE**

Turn the frame over and apply one coat of Resene Waterborne Woodsman to the front and edges of the frame. Allow to dry.

**STEP TEN**

Repeat steps eight and nine, applying a second coat of Resene Waterborne Woodsman to the frame. Allow to dry.

**STEP ELEVEN**

Measure and mark the bamboo canes to a length of 1.78m.

**STEP TWELVE**

Cut the bamboo canes to length with the saw.

**STEP THIRTEEN**

Fix the bamboo canes to the back of the timber frame using 30mm screws, as shown. Drilling pilot holes first will prevent bamboo from splitting.

**PLACEMENT**

Fix the frame to a wooden shed wall or fence using 100mm exterior screws or nails, drilling pilot holes first to prevent wood from splitting.



the paint the professionals use

For more on paints and stains phone 0800 RESENE (0800 737 363) or visit your Resene ColorShop or [www.resene.co.nz](http://www.resene.co.nz)