



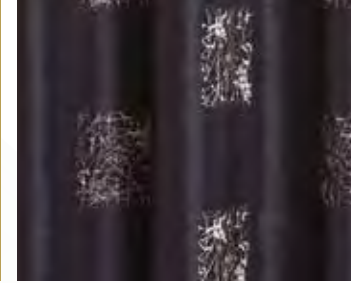
75131 RESENE WALLTRENDS II



RESENE FLEETWOOD
RESENE THE RANGE 2011/12



CAPTIVATE - CHARCOAL
RESENE CURTAIN COLLECTION



RESENE AYERS ROCK
RESENE THE RANGE 2011/12



RESENE WILD THING
RESENE THE RANGE 2011/12



RESENE CURTAIN COLLECTION: CAPTIVATE

Very different; very effective; Resene Captivate from the Resene Curtain Collection combines the surprise element of abstract embroidered panels with the soft sheen of a silk slub, in colours that will truly captivate and inspire. Available in Charcoal, Naturalle and Stone.

www.resene.co.nz/curtains

RESENE THE RANGE 2011/12: RESENE WILD THING, RESENE FLEETWOOD, RESENE AYERS ROCK

From the Resene The Range 2011/12 fashion fandeck, Resene Wild Thing is a star bright yellow gold, that is bold, energetic and frivolous. Goes with softened blues, maritime aquas or hot pinks. Resene Fleetwood is an edgy, energetic twist of green, brown and mustard yellow. Try with yellow greens, rouge violets or lemon sherbets. Resene Ayers Rock is an Uluru desert sunset, full of fire and splendour. Goes well with reptilian olives, warm greys or spearmint greens.

www.resene.co.nz/colour

RESENE WALLTRENDS II: 75131

Striking feature wallpapers in modern neutral hues through to striking black and white designs are available in the Resene WallTrends and Habitat collections. View the Resene wallpaper library in Resene ColorShops or online with thousands of wallpaper swatches.

www.resene.co.nz/wallpaper

SOME LIKE IT HOT

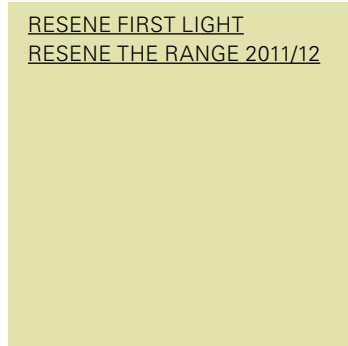
Highly saturated reds, oranges and bright colours make a setting that's both sizzling and exciting. This sort of colour scheme goes equally well with many exotic themes – Pacific, Spanish, Indian, Moroccan, South American and more. Some second-hand items were painted then matched them with store-bought accessories and furniture. The walls are Resene Whizz Bang, the floor is Resene Outrageous, the table is Resene April Sun, the bowl is Resene Pursuit, the yellow plate underneath is Resene Spotlight, the cup is Resene Galliano and the bamboo fruit platter is Resene Daredevil, all colours from the Resene The Range 2011/12 fashion fandeck.

Available from Resene ColorShops nationwide,
ph 0800 RESENE (737 363) www.resene.co.nz

Available from Resene ColorShops nationwide,
ph 0800 RESENE (737 363) www.resene.co.nz



MAZE - STONE
RESENE CURTAIN COLLECTION



RESENE FIRST LIGHT
RESENE THE RANGE 2011/12



25220 RESENE WALLTRENDS II



RESENE FANTAIL
RESENE THE RANGE 2011/12



RESENE POET
RESENE THE RANGE 2011/12

RESENE CURTAIN COLLECTION: MAZE - STONE

From the Resene Curtain Collection, Resene Maze is smooth and silky with incredible draping qualities, giving a bold abstract design the soft treatment. Woven texture effects and a metallic sheen make this a very contemporary fabric. Available in Charcoal, Hydra, Naturalle and Stone.

www.resene.co.nz/curtains

RESENE THE RANGE 2011/12: RESENE FIRST LIGHT, RESENE FANTAIL, RESENE POET

From the Resene The Range 2011/12 fashion fandeck, Resene First Light is a diluted twist of lemon and sherbet, zingy and effervescent. Goes well with deep reds, grey greens and natural mustard yellows. Resene Fantail is a quintessential beige condensed with malt, milk and a silky perfection. Try with grape browns, grey greens or blackened whites.

www.resene.co.nz/colour

RESENE WALLTRENDS II: 25220

Striking feature wallpapers in modern neutral hues through to striking black and white designs are available in the Resene WallTrends and Habitat collections. View the Resene wallpaper library in Resene ColorShops or online with thousands of wallpaper swatches.

www.resene.co.nz/wallpaper

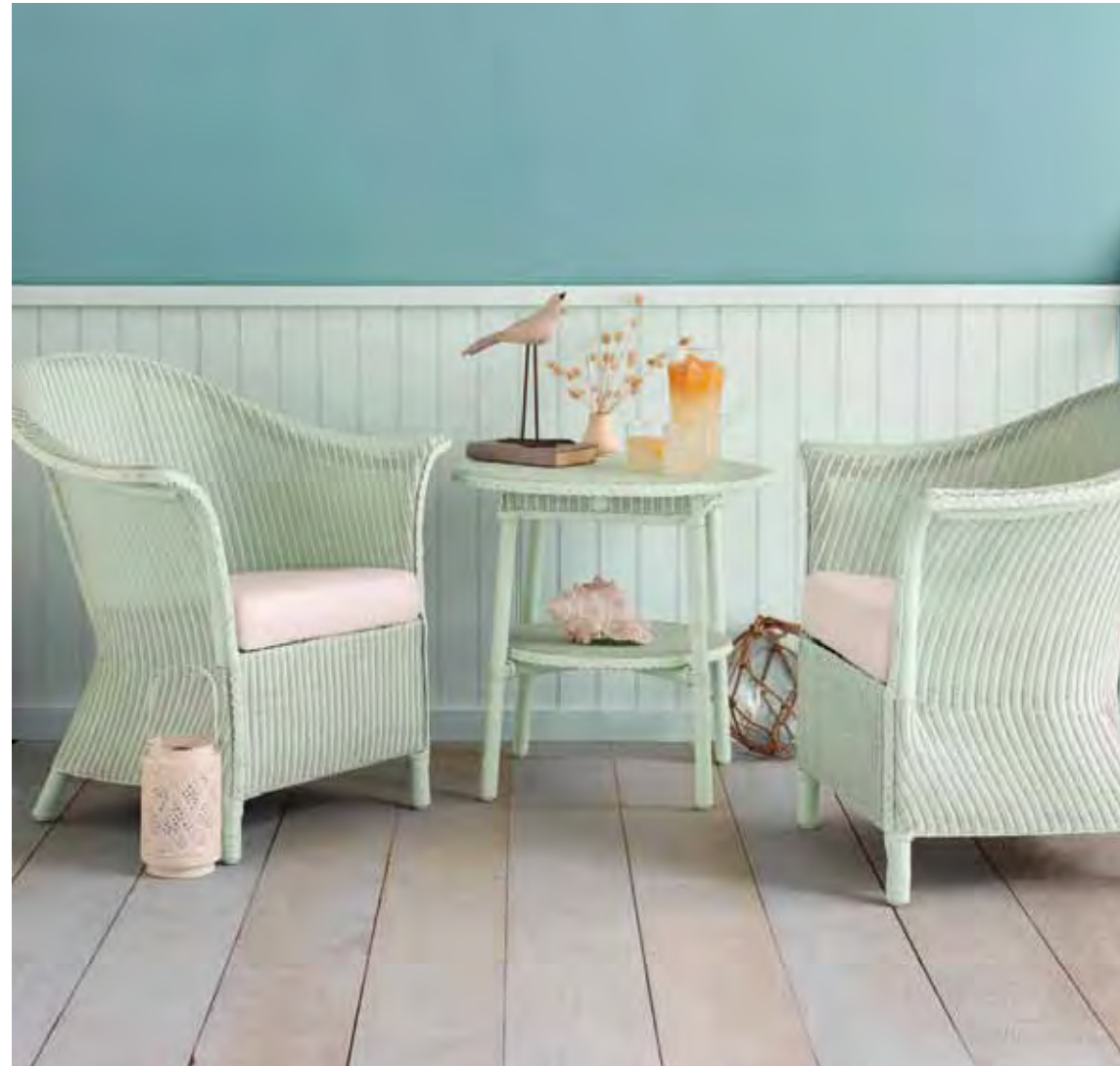
Available from Resene ColorShops nationwide,
ph 0800 RESENE (737 363) www.resene.co.nz



A STUDY IN NEUTRALS

Soft washed out neutrals tie together this study nook with its industrial vintage theme. The wall is Resene Rice Cake, the floor is Resene Paint Effects Medium mixed with Resene Half Haystack, the box is Resene Half Putty and the ampersand on top is Resene Half Alabaster. Colours from the Resene Whites & Neutrals collection.

Available from Resene ColorShops nationwide,
ph 0800 RESENE (737 363) www.resene.co.nz



BEACHY BLISS

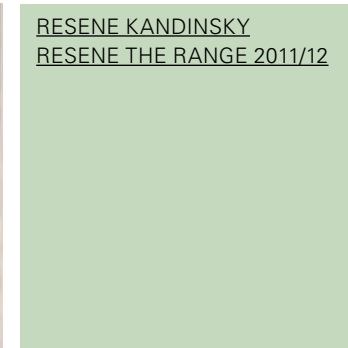
Create a soothing beach-inspired setting with soft sea colours – crossover tones that are neither blue nor green. The wall is painted in Resene Kumutoto, the tongue-and-groove panelling in Resene Carefree and the floorboards colourwashed in Resene Paint Effects Medium mixed with Resene Escape. Colours available from the Resene The Range 2011/12 fashion fandeck.

Available from Resene ColorShops nationwide,
ph 0800 RESENE (737 363) www.resene.co.nz

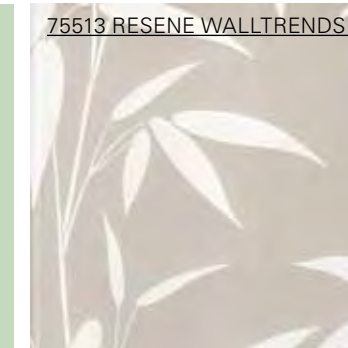
UNISON - BLONDE
RESENE CURTAIN COLLECTION



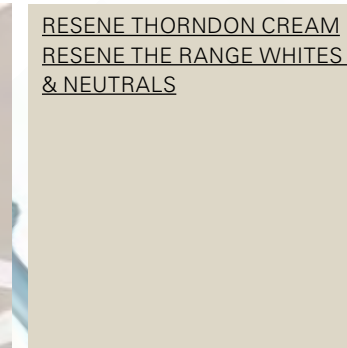
RESENE KANDINSKY
RESENE THE RANGE 2011/12



75513 RESENE WALLTRENDS II



RESENE THORNDON CREAM
RESENE THE RANGE WHITES
& NEUTRALS



RESENE ESCAPE
RESENE THE RANGE 2011/12

RESENE CURTAIN COLLECTION: UNISON - BLONDE

From the Resene Curtain Collection, Resene Unison is multi-layered and multi-textured combined with top-stitching and clever weaving in this classic stripe with a creative twist. Available in Blonde, Mocha and Naturalle.

www.resene.co.nz/curtains

RESENE THE RANGE 2011/12: RESENE KANDINSKY, RESENE ESCAPE

From the Resene The Range 2011/12 fashion fandeck, Resene Kandinsky is a pastel aqua green with an underlying depth, placid and dry. Goes well with blackened whites, grape browns or green yellows. Resene Escape is a pale cerulean blue, dreamy and calm. Try with stormy blue greys, blackened whites or grape red browns.

www.resene.co.nz/colour

RESENE THE RANGE WHITES & NEUTRALS: RESENE THORNDON CREAM

From the Resene The Range Whites & Neutrals collection, Resene Thorndon Cream is an understated, urbane and sophisticated neutral. Goes well with beige neutrals, blackened whites or deep dusk greens.

www.resene.co.nz/colour

Available from Resene ColorShops nationwide,
ph 0800 RESENE (737 363) www.resene.co.nz