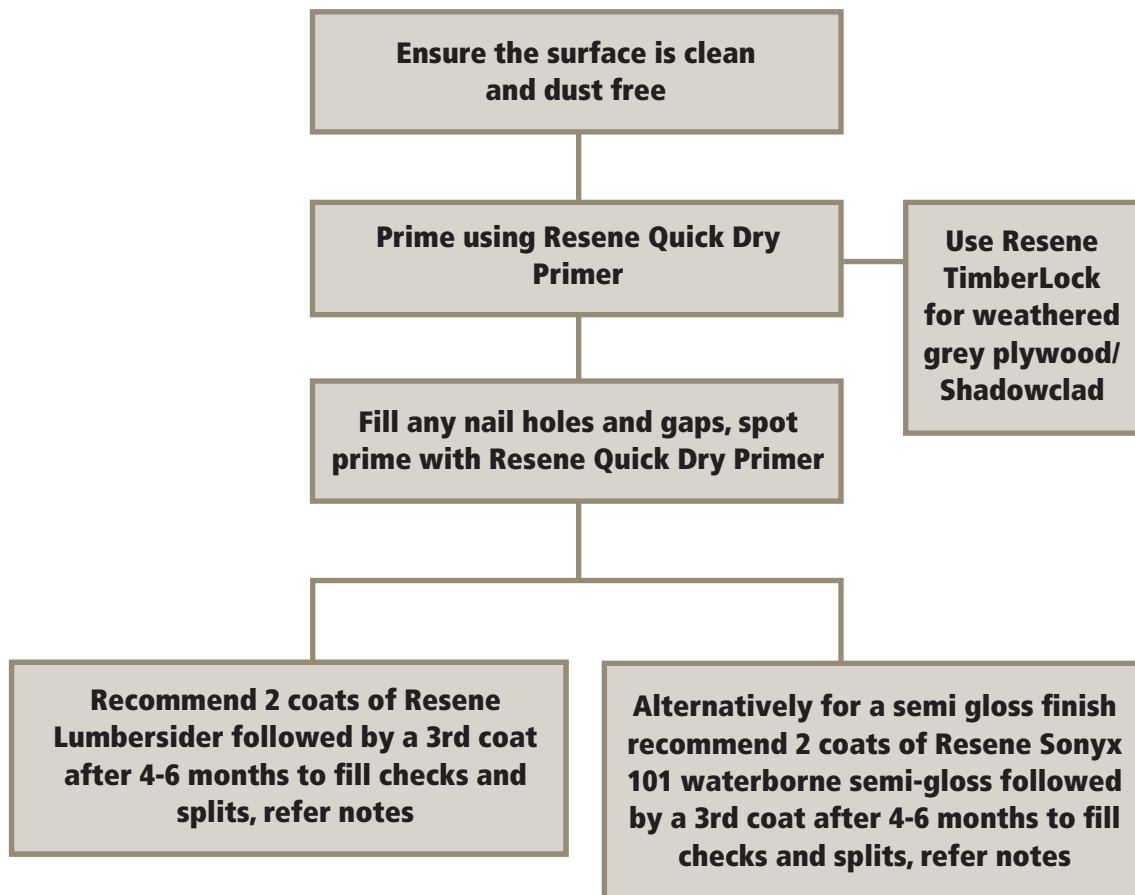


## Shadowclad and plywood



'Use paint colours with a light reflectance value of 40%-100% to meet the 50 year durability requirement of the NZBC to prevent potential problems such as face checking. The use of 'Resene Cool Colour Technology' can increase the range of dark colours (LRV <40%) which can be used on the substrate and may be acceptable to the local Territorial Authority as an 'Alternative Solution'.'

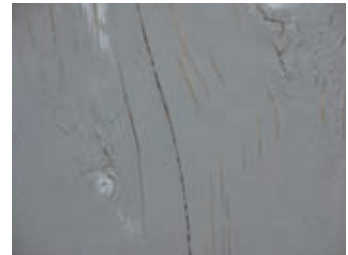
Also consider using



## 7. Shadowclad and plywood

### Notes:

- Shadowclad is a form of plywood and behaves in a similar manner. It is manufactured by Carter Holt in Australasia. Most commonly it is designed to look like rough sawn vertical timber – it is promoted as being suitable as a bracing board as well as cladding. Typically flathead galvanised nails are used to fix the sheets and are simply painted over.
- Bracing refers to how a structure is stabilised against movement in strong winds and earthquakes.
- To comply with the NZ Building code Shadowclad must be painted or stained and not left to weather. Marine ply can however.
- It readily accepts paints and stains although due to an anomaly in the NZ building code when it is stained (with Resene Woodsman for example). It doesn't meet the bracing standards and additional bracing (and cost) is needed.
- Previously painted plywood and Shadowclad should be prepared and painted the same as timber weatherboards (refer to flowcharts 2 and 3).
- The most common form of plywood used exterior is Marine ply. Construction plywood is also frequently used but typically as a base for a cladding such as vertical Cedar boards and polystyrene - usually to improve bracing.
- Plywood and Shadowclad are manufactured from alternating thin layers of layered timber that are then glued together. The top layer is likely to split or check when first exposed to moisture and heat (a rainy day followed by a sunny day!). This will happen regardless of whether it is painted or stained first and is not a board fault.
- We recommend that either it is deliberately wet and allowed to check (allow approx. 24 hours) and then primed and painted - applying a third coat to the checked area or painting it straight away and allowing for a third coat to be applied at a later date once it has checked.
- The very best but hardly used paint system for ply is Resene X-200. For its crack filling and high build properties.
- A roller is an ideal way to paint plywood and the face of Shadowclad.
- The statement on the preceding page is from the Resene Specification system for Shadowclad and is included as a note to point out the requirement for light reflectance values over 40% unless Resene Cool Colours are used and the local council accepts the change.



### Key accessories

- Resene Moss & Mould Killer
- Resene Paint Prep and Housewash
- A good quality brush is recommended
  - 75-83mm Legend brush for men
  - 63-75mm Legend brush for women
- Contract filler for any cracks or nailheads
- 120 grit zinc stearate sandpapers for preparing and 180grit for sanding fillers
- Paint pot to decant into if using 10 litre pails

### Add ons

- Drop sheets
- Resene Hot Weather Additive for hot dry conditions
- Painter dusting brush
- Painter's gloves (good for sanding and painting)
- Resene MoulDefender