



in the stars

Robyn Kilty blames the stars for her predilection for bright red doors and flowers.



If you are born under the star sign Taurus, chances are you are going to be a colour freak. Taureans have a predilection towards colour. I was born a Taurus and I can't help myself.

It makes sense, therefore, that the first time I saw the Victorian workers cottage which I was later to buy, I saw it in terms of what could be done with it in colour. The practical repairs were the necessary and expensive part of the restoration, but also the tedious part. Colour was the real deal!

Even so, the first painting of the cottage was reasonably conservative as I felt confined by the highly pitched and quite dominant new blue-grey Colorsteel roof, so I used a putty colour, Resene Thistle, on the weatherboards and dark blue around the doors and trims.

Despite this tasteful beginning, I couldn't resist breaking out somewhere, so the front door was painted bright Resene Guardsman Red. It was this red which was the inspiration for the garden. That, and a recent visit to Monet's garden at Giverny in France. >

Opposite The Resene Guardsman Red front door is seen through the entrance arch and the vigorous old world rose called Parkdirektor Riggirs.

Above Robyn's garden is a riot of colour, right down to the purple foliage and red-fringed lettuces.

-  Resene Guardsman Red
-  Resene Bermuda Grey
-  Resene Madison
-  Resene Breathless
-  Resene Thistle



During the early 1990s, it was fashionable to use pastel colours in the garden, influenced by Vita Sackville West and Sissinghurst's White Garden. Nobody in New Zealand seemed to have heard of Vita's Hot Garden at that time so reds and oranges were perceived as the worst of taste. As for magenta – don't even mention it!

After seeing Monet's garden in late summer, and the jewel-like way the magentas of dark cosmos, dahlias and gladiolia were interspersed with the rich golds of rudbeckia, sunflowers and golden rod, I knew there would be no more pastel for me.

I couldn't wait to get home and plant those tasteless red flowers in my front garden to complement the Resene Guardsman Red door. At first I experimented with all the reds together – the cool magentas and crimsons, as well as the hot scarlet reds and terracotta – but found that in my small front garden, this just didn't work. It looked too spotty with no impact. I have seen since the cool and hot reds planted together in large gardens where there is plenty of space for each species and colour to be planted en masse, each making its own statement interspersed with foliage, and it looked stunning.

In a small space, however, less is more, so I began to limit my palette, using only the hot scarlet reds, such as Geum 'Mrs Bradshaw' and terracotta reds such as the brownish-red rose 'Colourbreak'. These are planted with bronze foliage plants such as flax and heuchera 'Amethyst' and also with lime green *Helleborus corsica* and *Euphorbia*

Above A rustic seat on the front veranda along with pots painted Resene Guardsman Red.

Above left Robyn Kilty is planning her next outrageous colour scheme.

Left Crimson asiatic lilies and dark blue delphiniums blend well together against the Resene Bermuda Grey weatherboards.

Opposite A quiet corner of the house, white wisteria drapes over a courtyard.



Right In early spring the hot colours, of the terracotta polyanthus and orange tulips are off-set in the front border by the cool creamy green of *Helleborus Corsica* and the sky blue perennial forget-me-not snuggled between clipped box balls.





polychroma. Amongst these plantings are splashes of rich dark blue – sometimes delphiniums, sometimes the perennial forget-me-not *Omphalodes cappadocica* which echoes the blue painted trims of the house.

I fiddled with colour in the garden for a number of years until it was time to paint the house again. I resolved to be brave and a little outrageous this time, so I painted the weatherboards quite an intense mid-blue called Resene Bermuda Grey which blended well with the denim grey roof, and I used a brighter dark blue (Resene Madison) on the architraves and veranda posts. I also used more of the wonderful Resene Guardsman Red, not just on the front door, but also on the insides of the window trims and on terracotta pots for the veranda.

This was fine for the front garden where scarlet was king, but I didn't want to be confined to scarlet flowers in the side and back gardens as well, so I changed the colour of the trims and doors beyond my side fence, using lime green Resene Wasabi which also looks great with blue.

This freed me up with my colour choices in the side and back gardens, as almost any colour will look good with blue and lime green. Here, I indulged in the wonderful cool reds – the magentas, burgundys and even hot pinks which I also love. To these I have added purple, and even pale pink and touches of white. Again, I have used purplish/bronze foliage, as well as more blue flowers – blue is the most flexible colour in the garden offsetting almost any other colour. These cool red and pink tones do blend well against the blue of the house at the back and the lime green of the doors complements all.

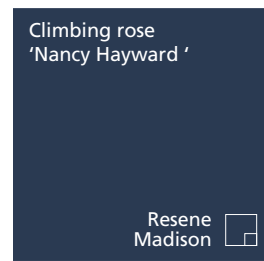
The house will soon be in need of painting again, so where to next? In my head I have already worked out a colour scheme which will change everything... and it will not be demure. **H**

words Robyn Kilty pictures Juliet Nicholas



Get the look with Resene Sonyx 101 tinted to Resene Bermuda Grey and Resene Lustacryl semi-gloss waterborne enamel on trims and joinery

Resene Bermuda Grey 



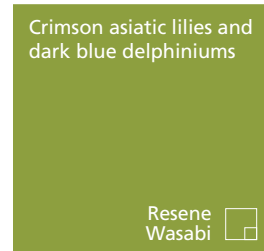
Climbing rose 'Nancy Hayward'

Resene Madison 



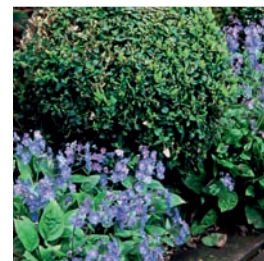
Get the terracotta pot look with Resene Terracotta Sealer topcoated in Resene Lumbersider tinted to Resene Guardsman Red

Resene Guardsman Red 



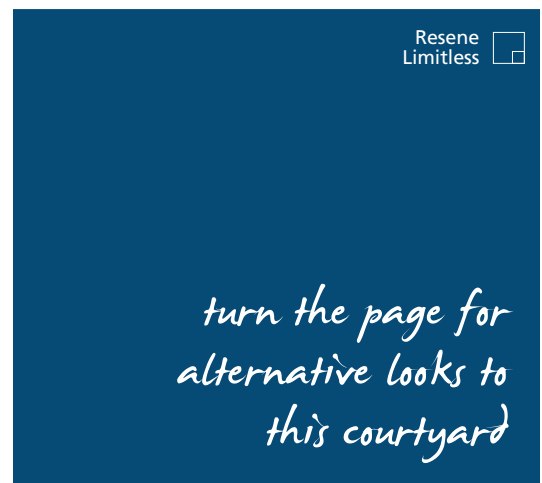
Crimson asiatic lilies and dark blue delphiniums

Resene Wasabi 



Buxus with perennial forget-me-not (*Omphalodes Cappadocica*)

Resene Relax 




Resene Limitless 

turn the page for alternative looks to this courtyard

alternative solution - down on the farm



^ A rural twist with weatherboards in Resene Cargo and trims in Resene Dynamite and Resene Spanish White. The wooden 'cattlestops' are stained in Resene Crowshead.

 Resene
Eighth Akaroa

a farm-inspired scheme transforms this courtyard



Wendy Twine, of Twine Landscape Design, suggests this alternative scheme:

This whimsical design is inspired by the farming landscape with a natural colour palette enhanced by modern interpretations of iconic rural features. An exposed aggregate courtyard is accessed via wooden 'cattlestops' traversing a water feature and a dry river bed of pebbles. This dichotomy emphasises the water conservation message, reflected in the chain downpipe and corrugated iron water tank. The cattlestops are linked by pavers inscribed with key rural words. The image of farm water troughs is evoked through raised concrete planters, embellished with grasses and rushes or quirkily named plants such as *Ligularia* 'Tractor Seat' and Lambs Ear. Barry Lett's dog sculpture sits patiently, awaiting his master and his day's work to begin. And at the end of the day there is a collapsible wooden bar table (not shown) with tractor seat bar stools reminiscent of old woolshed tables. A retractable awning creates shade in hot summers.

mobile 027 226 4584 email wendy@twinelandscapes.co.nz



illustration
Bruce Bryant

	<p><</p> <p>Lambs Ear (<i>Stachys lanata</i>)</p> <p>></p> <p>The Guardian sculpture by Barry Lett</p>	
<p>></p> <p>Mediterranean retractable awning</p> <p>Weathermaster www.weathermaster.co.nz 09 574 2200</p>		<p>Resene Spanish White </p> <p> Resene Cargo</p> <p> Resene Crowshead</p> <p> Resene Dynamite</p>
	<p><</p> <p>Water tank</p> <p>Tanks Alot www.tanksalot.co.nz 0800 243 279</p> <p>></p> <p>Ligularia 'Tractor Seat'</p>	

alternative solution - contemporary calm



^ This contemporary yet summery scheme uses weatherboards in Resene Foggy Grey with trims in Resene Limerick and Resene Venice Blue.

 Resene
White Thunder

a calm, uncluttered solution for this courtyard



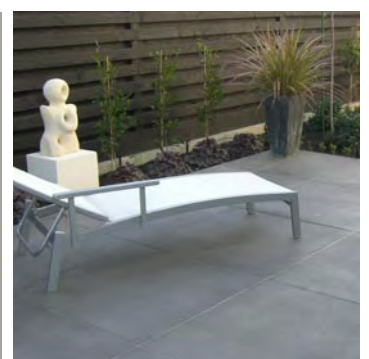
Jennifer O'Neill-Joyce, of Gardens 2 Go, suggests this alternative scheme:

This is a contemporary space which offers an uncluttered and easy-care area to relax in. The lime and blue colours (Resene Limerick and Resene Venice Blue) of the window joinery are echoed throughout the space in the squab fabric and mosaic tiles set into the coloured and cut concrete. Green mondo grass softens the concrete, the grid pattern of which provides visual interest. The open cedar pergola, finished in Resene Limed Oak (stain finish), mimics the grid pattern below, allows for natural light and defines the space as an 'outdoor room'. Extending the pergola and ground plane grids past the lines of the house gives the sense of more space. The pendant light acts as a sculptural piece during the day, and makes the area highly usable at night. The setting is finished off with welcoming and comfortable chairs.

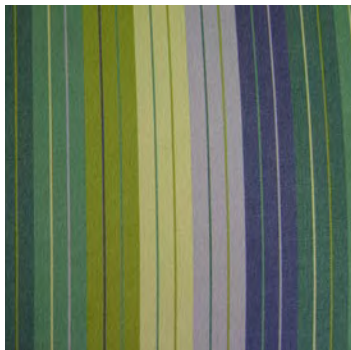
phone 021 376 277 email g2g@paradise.net.nz




<
Floral lamp by David Trubridge
(use aluminium version for outdoor use)
www.davidtrubridge.com
06 650 0204 >
Coloured and cut concrete
Peter Fell and Amazing
Concrete Gen 2
www.peterfell.co.nz
0800 422 656



>
Seat cushions in Sunbrella fabric,
Seville Seaside design
Cushions Unlimited
www.cushionsunlimited.co.nz
09 445 6068
V Mondo grass
(*Ophiopogon japonicus*)



Resene Landmark 
Resene Foggy Grey
Resene Limerick
Resene Venice Blue



>
Miro Swivel seats and table
Coastal Design
www.coastaldesign.co.nz
09 365 2726
>
Hand-glazed cottage square
mosaics in lime
Middle Earth Tiles
www.middleearthtiles.co.nz
09 360 2638



illustration
Bruce Bryant