

## bathing in the glow

Epitomising the glamour of yesteryear, this dramatically moody ensuite is designed to seduce.

With its golden walls and sumptuous detailing, this bathroom is just one of several in a gracious old country homestead, Parkhill, near Napier that was upgraded as a luxurious boutique lodge by entrepreneur American business woman Karen Sandler.

Responsible for several successful upmarket accommodation and dining venues in Hawkes Bay, Karen is also the owner of a large, multi-store Hong Kong homewares company, On The Edge, which gives her access to antique-style furniture, lighting and accessories.

Those distinctive pieces add an opulent signature to the interiors of Parkhill. And because Karen travels extensively to buy the collections, she keeps an eye open for complementary pieces to place in her interiors.

At Parkhill Estate, the challenge was to bring the bedrooms into the 21st century, adding modern convenience with a touch of decadence, without intruding beyond the boundaries of the home's original footprint.

This particular bathroom was once the end of a very long hallway. Incorporating it into a bedroom suite was a bit of a squeeze, says Karen. And while it's the smallest bathroom in the house, she still wanted it to feel indulgently spacious.

Helping Karen with the design, Wendy Giltrap of Inhouse Interiors suggested the glittery bronze tone-on-tone look to expand the room's dimensions. Resene Spark, a shimmering metallic paint, was used on the walls to marry perfectly with the small bronze shower tiles.

The extravagantly wide shower takes up most of the room, but with its glass walls and door, the space still feels comfortably open.

There are no windows and there's deliberately not a lot of light in the room. Subtle lighting creates a soft, inviting ambience, however. Apart from halogen lights in the ceiling, a stunning gilt and glass >



**Top** The decadent gold room cleverly fits into what was once hallway space.

**Above** Atmospheric lighting is part of the sumptuous scheme.

**Right** The antique-style vanity sports a marble top.







**Above** The bronze-tiled shower takes up most of the room.

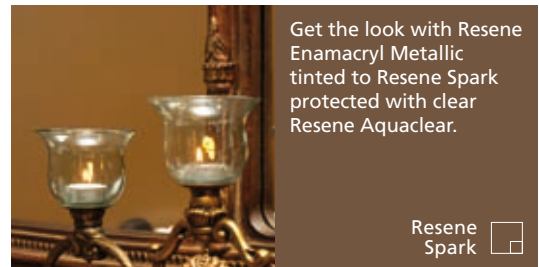
**Did you know?** Resene SpaceCote Low Sheen Kitchen & Bathroom and Resene Lustacryl Kitchen & Bathroom combine anti-bacterial silver protection and MoulDefender mould inhibitor, perfect for minimising unwanted nasties in kitchens, bathrooms and laundries.

candleholder and a rectangular onyx lamp sparkle on the antique vanity. A pretty Angel wall sconce, featuring pendants of coloured glass, throws a warm glow in the toilet cubicle, which is discreetly hidden behind the shower.

Taking up the full width of the end wall, a large antique wooden vanity, with a shapely marble top, was imported from Hemispheres in Dallas, the United States. Above it sits a set of tall mirrors in a gilt frame, also from Hemispheres.

Bronze tapware was specially ordered from English manufacturer Perrin & Rowe for the shower and on the marble vanity top. The twin basins are also bronze to complement the softly aged look.


Colours, textures and finishes selected by both Karen and Wendy lend a richly decadent flavour to make this small room a bathing experience worth waiting for. **H**

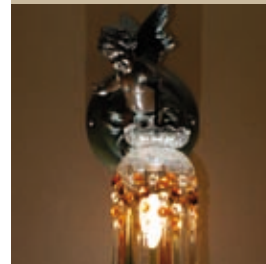


Get the look with Resene Enamacryl Metallic tinted to Resene Spark protected with clear Resene Aquaclear.

Resene Spark 

Designer Glass shower tiles: Penguin Ceramics, Havelock North

Resene Eighth Colins Wicket 

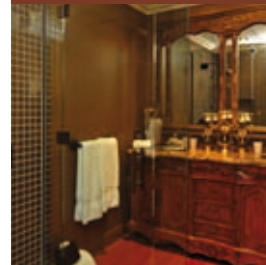


Angel wall sconce: On The Edge

Resene Moscow Mule 

Bronze tapware: Perrin & Rowe

Resene Desperado 



Designers: Wendy Giltrap, Inhouse Interiors, and Karen Sandler.

Resene Mongoose 

Resene Hot Chocolate 

words Vicki Holder  
pictures Tim Whittaker