



*Resene Total Colour Residential
Interior Award winner*

Terry Hogg
Lick Light+Colour



colour courage

A confident colour and lighting consultant and his adventurous client create a bounty of brave and unexpected delights.

With a profound disregard for predictability and trends, Terry Hogg of Australian-based Lick Light+Colour enjoys shattering design preconceptions and encouraging brave colour choices. A recent commission at accessories designer Peter Lang's Victorian terrace in Sydney's Elizabeth Bay was a creative partnership made in heaven. And it's a partnership that has resulted in Terry winning a 2013 Resene Total Colour Award – see page 30.

"It's about the significance and utility of the space itself," Terry explains. "If a colour works in that space it simply works. I'm not interested in being locked in to what's 'in', or in playing safe."

The result is a sublime palette choreographed to enhance and balance the moods of the rooms while showcasing Peter's beautiful collectibles. Clever use of vibrant hues balanced with complex neutrals creates a sophisticated and indulgent colour scheme.

"I always begin with the space and the light," explains Terry. "And then it's about the client themselves. Everybody has a colour sense, even if they're not aware of it." ➤

Left Bold strokes of Resene Scarlett in the hall, Resene Troubadour (purple), Resene Desperado (rust) and Resene Decadence on the ceiling create a lively, opulent ambience and set off striking mantelpieces and Peter's art.

- Resene Decadence
- Resene Troubadour
- Resene Black White
- Resene Scarlett
- Resene Desperado



did you know...

... if you need help with your paint questions, decorating project or just want to be inspired and share your projects with like minded people, you can join the Resene facebook page by clicking 'like' on the Resene facebook page, www.facebook.com/resene?

Left A decadent chocolate marble island bench stands in the calm kitchen-dining space where the walls are finished in a custom colour, Resene Lick Minimalist similar to Resene Black White.

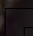
Below Resene Oilskin provides substantial serenity for the master bedroom, and a soft backdrop for brighter tones around the room.

 Resene Oilskin



"I like to take colours out of context and use them in a contemporary way. It's fun to confound expectations."

Resene Desperado 

 Resene Lick Minimalist

Immediately behind the terrace's black, streetscape-safe front door a bold, spicy Resene Scarlett used on the walls and the ceiling is the very epitome of 'wow factor'. "It's about impact," Terry explains. "Red can be such a strong, dominating colour but here it provides a warm shock that signals arrival."

Throughout the interior a cool white paint colour custom-mixed by Resene and now nicknamed Resene Lick Minimalist provides the perfect backdrop for swathes of strong colour and Peter's impressive art collection. Confident statements in purple Resene Troubadour and rust Resene Desperado surround the original marble mantelpieces and echo hues found in the paintings in the living room.

The pièce de résistance of the living room's scheme is the cobalt blue ceiling, where the wondrous Resene Decadence frames Murano chandeliers. "I find that people often want to be taken further than they might dare to go themselves." Terry says. "Peter was the kind of client who could quickly see what I was trying to create."

At the rear of the terrace, the calm, white kitchen-dining area provides the perfect counterpoint to the world of colour up front. Terry's selection of finishes and lighting here includes a smoked-mirror splashback that reflects the solid, sensuous island bench of chocolate marble over walnut veneer.

Providing a serene and sumptuous transition to the upper level, one stairwell wall features the blackened navy of Resene Indian Ink. "People often think that dark colours make an area feel smaller but they can also represent vast space... a sense of infinity," says Terry.

The colour's depth offsets a quirky plate collection and rusted steel sculpture, and offers a striking contrast to Resene Kaitoke Green, which wraps from the landing into the hall.

Inspiring his clients to explore their boundaries with colour and lighting while gently managing their fears and misconceptions, Terry says: "My aim is to build a level of trust and entice my client with the possibilities. Initially, it's about visualising and sharing with the client what they can't see in a space... People have an emotional response to colour so it's never about forcing my ideas. It's about leading them beyond what they think is possible." >



Above The rich emerald of Resene Kaitoke Green invites a delicious dance with these exquisite vases.

Left Resene Troubadour provides a luscious surround for this mantel and artwork.





Above Playful plates float on an ocean of Resene Indian Ink.


"People have these strong colour associations... it's like a fear. I might suggest a peach or an apricot and most people will immediately think of the 80s, when everything was salmon and grey. I like to take colours out of context and use them in a contemporary way. It's fun to confound expectations."

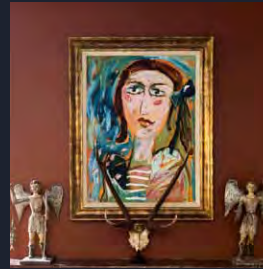
For the bedrooms, Terry suggested less vibrant yet still strong tones than those used elsewhere. "We wanted the bedrooms upstairs to feel moody and restful."

In the master bedroom, the substantial grey-brown of Resene Oilskin was chosen for its complexity, and to create a rich masculine ambience. The guest bedroom is enveloped in the luxurious dark green-grey of Resene Cliffhanger.

Peter's home shows what's possible when colour boundaries are pushed, but Terry is quick to point out that such adventurous clients are rare. "When they see the result, people always say 'I could never have done that!' And that's the point," Terry says. "We are all good at different things... Colour is a passion for me, colour is what I do." **H**

pictures Ashley Mackevicius
words Libby Kostromin, Making Meaning

Resene Indian Ink 

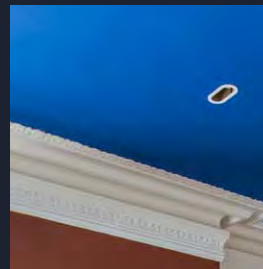
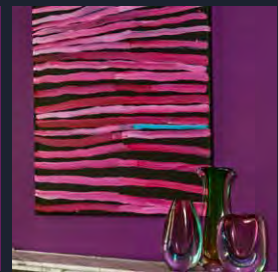


Get the look with Resene SpaceCote Low Sheen tinted to Resene Desperado.

Resene Desperado 

Get the look with Resene SpaceCote Low Sheen tinted to Resene Troubadour.

Resene Troubadour 

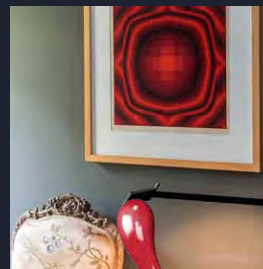
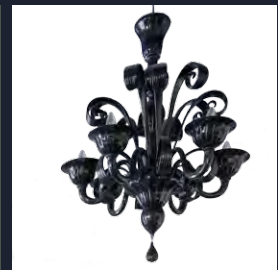


Get the look with Resene SpaceCote Flat tinted to Resene Decadence.

Resene Decadence 

Chandeliers: Murano

Resene Cliffhanger 



Designer: Terry Hogg, Lick Light+Colour, Australia, www.lickcolour.com.au

Resene Licorice 

turn the page
for alternative
looks for this
living room

Resene Scarlett 

Resene Kaitoke Green 

alternative solution - vintage style



^ Walls in a warm deep shade of Resene Foundry, and trims in Resene Alabaster are the perfect backdrop for a scheme of vintage-style furniture from Halo, including artworks, a silver-framed mirror and linen armchairs. The front door in Resene St Kilda echoes the tones of the rug. The curtains are held with a black reeded rod and lotus finial from Vanda NZ.

top tip

Enhance timber flooring with Resene Colorwood stain in your choice of timber colour then finish in Resene Qristal ClearFloor waterborne urethane to protect its good looks.

Resene Alabaster

rugged good looks warm this room



Interior designer **Robyn Mickleson** of The Design Depot suggests this alternative scheme:

The quite masculine vintage good looks of the Halo range of furniture and accessories inspired this scheme. I wanted to give what is quite a formal space, with the two fireplaces, a welcoming casual feel but also retain an air of sophistication and glamour. The contrast between the dark Resene Foundry and the white Resene Alabaster adds drama to the space and helps define the two rooms; this is also heightened by giving the back area a different purpose, as a study. Using Resene St Kilda as a very modern accent colour on the front door, which is then echoed in the rug, keeps the scheme from becoming too neutral and predictable. It's a very lived-in and cosy feel, created by leather, steel, timber and colour.

phone 07 839 6757 web www.thedesigndepot.co.nz

Resene St Kilda



> Black reeded rod and lotus finial

Vanda NZ
www.vanda.co.nz

∨ Newhaven linen drapes

Textilia
www.textilia.co.nz



∧ Gyro chandelier
Halo
www.halo-nz.co.nz
03 317 8044

∨ Antique decolourised floor rug in blue green
Nick Radford Rugs
www.nickradford-rugs.com
03 669 3755



Resene Alabaster

Resene Foundry

Resene Knave

Resene Triple Rakaia



> Kensington three-seater sofa in old saddle black leather

Halo
www.halo-nz.co.nz
03 317 8044



illustration
Malcolm White



^ Turned into a dining space, this room uses Resene Black Haze walls with window trims and the chimney breast in Resene Half Masala, while the rear space is defined with Resene Eighth Pravda walls. The table and chairs are from the Tube Line range from Hunter Furniture.

top tip

When painting inside, consider using Resene Zylone Sheen VOC Free – it's free of volatile organic compounds, which is better for indoor air quality.

□ Resene Half Masala

a local twist on a classic colonial style



Interior designer **Greg Booth** suggests this alternative scheme:

Having just visited Raffles in Singapore, I wanted to interpret that very English colonial look in a local way. The black and white flooring and the kentia palm echo the Raffles style, then I have added a monochromatic, almost skeletal framework with the Resene Black Haze walls in front, the Resene Eighth Pravda walls in the back and by highlighting the beautiful architectural details of the space – the windows and fireplace – in Resene Half Masala. Against that, I have added pops of colour in the bright tableware, carpet and that striking tiger artwork. I also wanted to define the two spaces with different purposes so have made the front area a dining space. It's a look that takes the colonial look, adds a bit of Eastern surprise and then gives it a Kiwi twist. The rough planking of the table and stools also brings in a bit of 'number eight wire' feeling.

mobile 027 221 2062 **email** gregb@carpetcourtdn.co.nz

Resene Black Haze 



>
D Blue Drum Chair with denim cushion

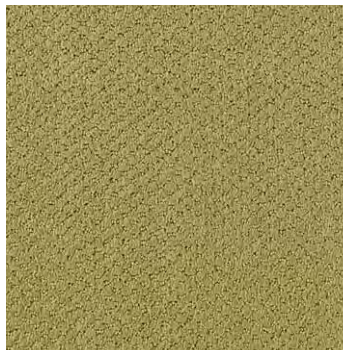
Hunter Furniture
www.furniture.co.nz

∨
Karastan Intriga Colours Range carpet, colour Cricket

Carpet Court
www.carpetcourt.co.nz
0800 787 777



∧
Initial Artwork, MS56 Warhols Lion
Hunter Furniture
www.furniture.co.nz



Resene Half Stonewall 

 Resene Eighth Pravda

 Resene Kombi

 Resene Flourish

illustration
Malcolm White



<
Ingmar Chair in Trento Lux 13
Hunter Furniture
www.furniture.co.nz

>
Tableware
Total Foods
www.tfe.co.nz

