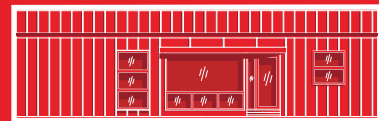
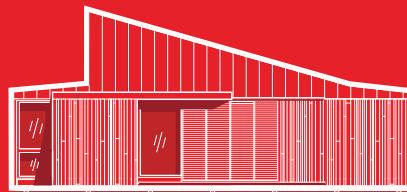
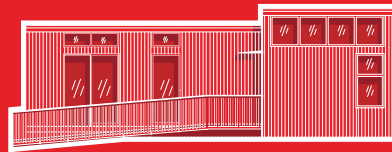
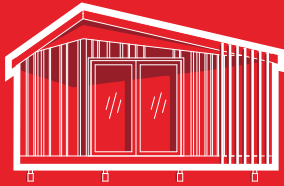
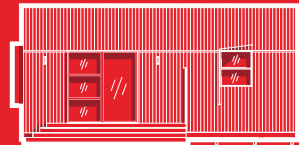
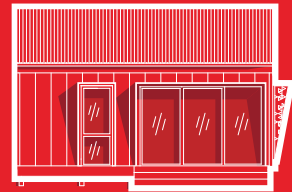
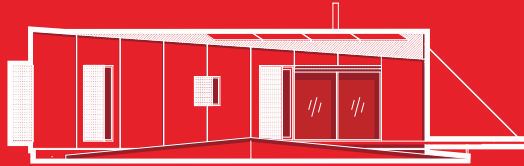
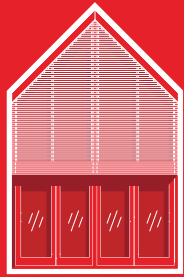


Prefab^{NZ}



SNUG

A home in my backyard



Choose your SNUG Home

Twelve smart + sustainable secondary housing options for your backyard

snughome.nz

Choose your **SNUG home** from these twelve smart + sustainable secondary housing options for your backyard.

What are SNUG homes?

A SNUG home is a secondary house made from prefabricated parts. It is pre-made offsite under controlled manufacturing conditions, ensuring a quality build. There is less construction time onsite, and less disruption to the new homeowner. A finished SNUG home is trucked in one piece to your backyard, and craned on to foundations before connection to services. Alternatively, it arrives in pre-constructed panels that are easily shifted into position, before rapid assembly by bolting.

How were SNUG homes chosen?

The design competition for the best SNUG home launched to massive interest at PrefabNZ's CoLab event in Auckland in March 2018. PrefabNZ is the heart of innovative construction in New Zealand. Dozens of teams from the building, architecture and design industries submitted plans for a prefabricated SNUG home smaller than 65m², which meets the Auckland Council's definition of a minor dwelling.

The judges

The SNUG home design competition closed at the end of July 2018, and an expert panel of judges considered each of the 86 designs entered. The panel covered these disciplines aligned with PrefabNZ's competition partners:

- **Architectural Designers New Zealand** – for great design
- **Auckland Council** – for ease of building consent
- **Holmes Farsight** – for buildability
- **Lifemark** – for lifetime design
- **New Zealand Green Building Council** – for sustainability
- **New Zealand Institute of Architects** – for architectural merit
- **PrefabNZ** – for prefabrication technology.

Judges assessed on: construction techniques, building code compliance, affordability, flexibility and adaptability, functionality, design and aesthetics, sustainability and energy efficiency, and presentation of concept drawings.

Twelve finalists and six winning SNUG homes

The judges narrowed their selection to twelve finalists, before awarding the six winning SNUG home designs.

Also featured in this catalogue are:

- **the People's Choice** as voted by the public online in September 2018.
- **the PrefabNZ International Judge's Choice** as selected by Dr Helena Lidelöw, platform manager for Lindbäck's Bygg and associate professor of the Luleå University of Technology in Sweden.

Six winning SNUG homes received:

- **Pre-consent approval from Auckland Council, significantly streamlining the consent process for buyers**
- **Assessment and consultation to achieve Homestar® rating, certifying health, efficiency and sustainability**
- **Assessment and consultation to achieve Lifemark® rating, indicating its usability and safety for people of all ages and stages**



Get a SNUG home in your backyard





CASABELLA

WINNER
snughome.nz

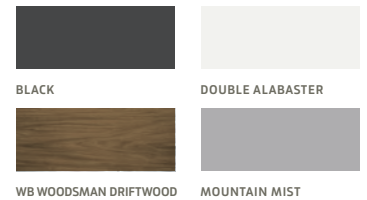


Casabella's strikingly elegant façade will complement even the most up-market urban backyard. It is highly customisable to specific site conditions by using a system of rooms – simply add more as needed, and orient them to maximise the sun's warmth and light. Additional screening for privacy adds to Casabella's flexibility. A key feature is the use of structural insulated panels. These innovative water-resistant panels with impressive

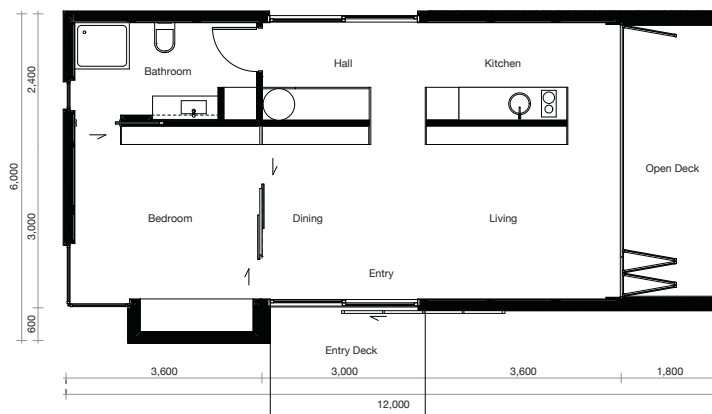
'green' credentials offer high ratings for insulation, airtightness and thermal mass to increase comfort and decrease energy bills.

What the judges said "With clever planning and meticulous detailing, Casabella balances the rational and exuberant. The striking roofline and skylight lets light fill the interior and provides for a mezzanine bedroom."

DESIGNER'S PALETTE BY RESENE



CASABELLA PLAN





FLIP

WINNER
snughome.nz

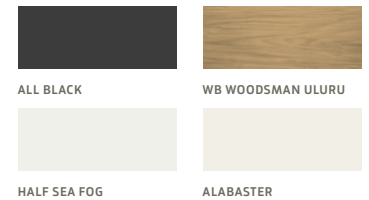


The inspired yet relatable name of this scheme was inspired by Kiwi jandals or 'flip-flops'. The **FLIP** models offer up to two bedrooms in a single-level dwelling, or a two-storeyed backyard apartment. There is also a drop-down ramp option. You get instant results here, as any variation arrives fully finished and ready for craning into position. FLIP's fully customisable shell and interior fit-out means

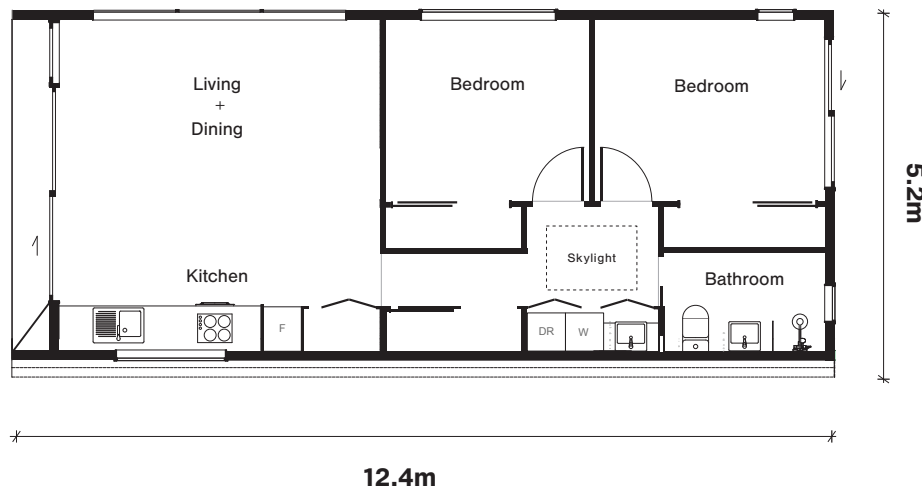
no two will be the same. Eco-appeal comes from in-built rainwater tanks, a greywater system and solar panels.

What the judges said "Architectural interest at entry invites you in, responding well to the challenge of making a restrained box form visually interesting."

DESIGNER'S PALETTE BY RESENE



FLIP PLAN





PITCH

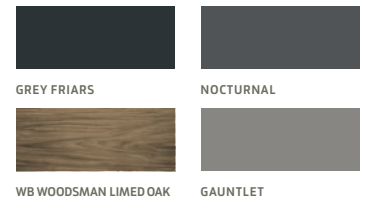
WINNER
snughome.nz



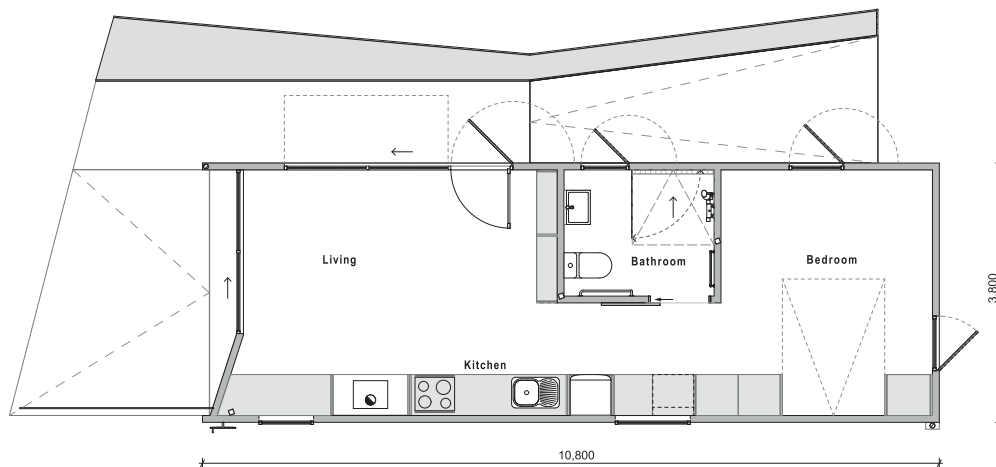
The bold silhouette of **Pitch's** roofline lies atop an energy-efficient and lightweight structure. Using a panel-based construction system, this versatile SNUG home offers individual tailoring in your choice of cladding options, wheelchair-friendly floor plan configurations and joinery finishes. Able to be fully fitted-out on existing assembly lines and transported to site on a single truck, you could enjoy installation of Pitch and its decking in mere days.

What the judges said "The reimagined monolith roof takes a sculptural form that offers interest on all façades. Standard extruded polystyrene panels are complemented by crafted details including a fold-down deck and bed. The design is fully accessible with efficient circulation through rooms and a clever band of services and storage along the back wall."

DESIGNER'S PALETTE BY RESENE



PITCH PLAN





A time-honoured gable roof referencing the traditional cottage form means **Kowae** will fit any suburban or country setting. Meanwhile, distinctive clip-on sunshading screens with decorative detail add modern identity. Kowae is made using a panel system that is also the final cladding. It provides an airtight, soundproof interior which is also resistant to fire, water, mould and mildew. And if you are short for actual land but have water on your property, a simple

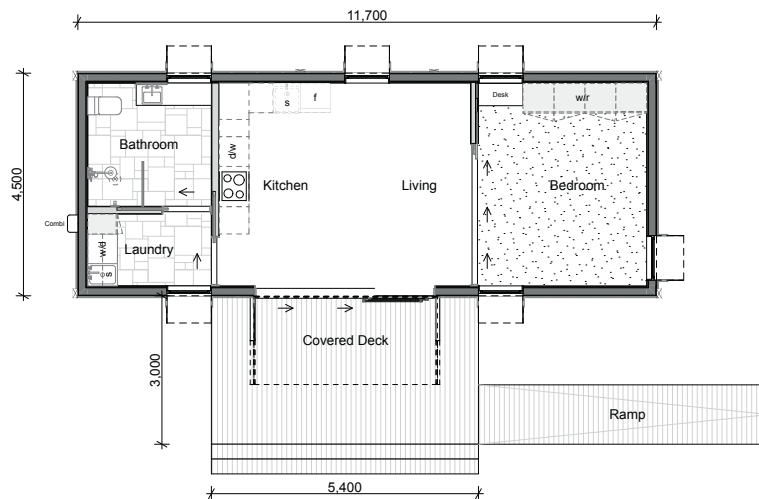
modification of its foundation system will convert this SNUG home into a houseboat. Kowae comes in studio, one and two-bedroom options.

What the judges said "Instantly appealing with simplicity of plan and clarity of form as well as adaptability. The services hub module and the clear detailing around how the modules connect are notably impressive."

DESIGNER'S PALETTE BY RESENE



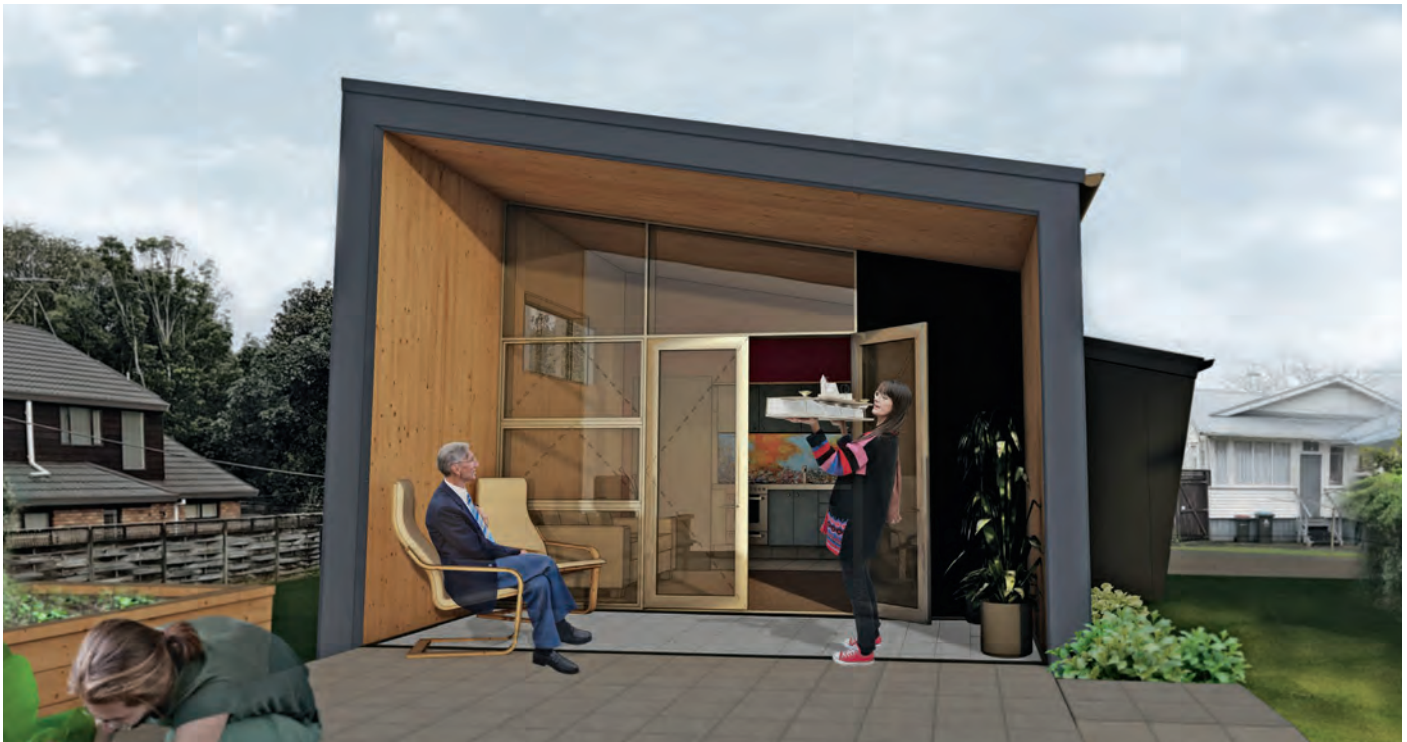
KOWAE PLAN





WHARE-ITI

WINNER
snughome.nz

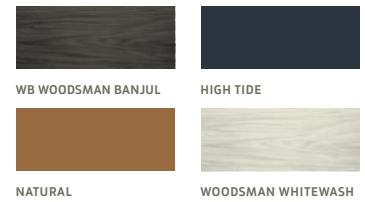


Whare-Iti can suit a range of sites, and spaces as narrow as nine metres. Box-forms plug into a services core in a variety of configurations to best suit yard size, sun, views, access and budget. The living space is a multi-use space and serves as a bedroom by night, with sliding doors preserving kitchen access for others. Sustainable design includes locally-sourced timber panels, passive solar harvesting, thermal mass, electric window openers

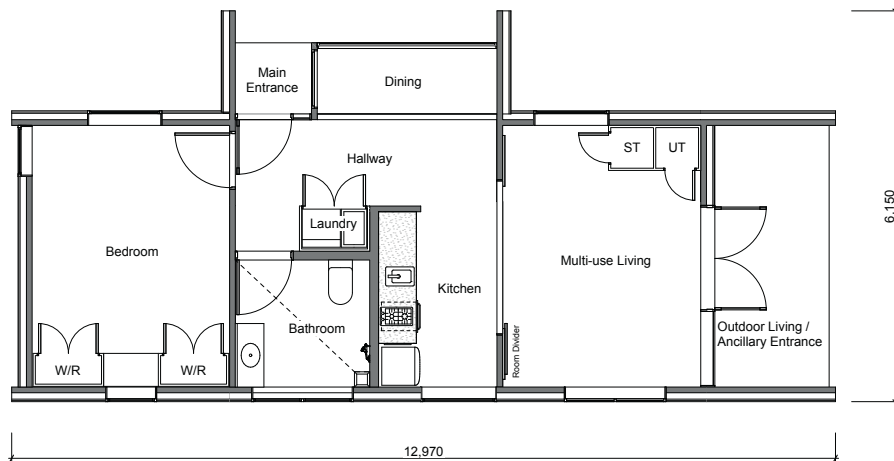
and a roof pitch suitable for solar power.

What the judges said "It looks like a rectilinear box, but the configurable interior allows for changes to walls to give diagonal view-lines and paths of interest. An exceptionally well-considered design that is aesthetically adaptable and flexible, and easily imagined as a complementary dwelling in a number of New Zealand sections."

DESIGNER'S PALETTE BY RESENE



WHARE-ITI PLAN





THRIVE

WINNER
snughome.nz



The **Thrive** design is a marvel of flexible, adaptable options for various site constraints. Thrive is a repetitive planning system starting with a self-contained studio unit, which can be expanded by adding one or two other box-forms. A key feature of its foundation system is its long span capabilities – only one pile is required every four metres – making for potential construction on almost any

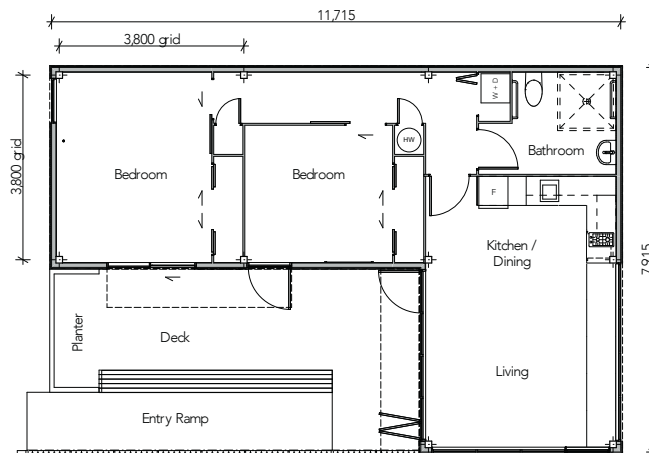
topography. A skylight delivers natural light to the bathroom, and generously sized bedrooms and living areas make Thrive ultimately liveable.

What the judges said “A well-planned services hub adds value in terms of ease of build and accessibility. Incredibly adaptable, even into a sloping site.”

DESIGNER'S PALETTE BY RESENE



THRIVE PLAN





45 DEGREES

FINALIST
snughome.nz



This elegant two-storey option effectively doubles the floor space inside, as its efficient footprint takes up less of your precious backyard. The fundamental concept of **45 Degrees** is tucking mezzanine sleeping and bathroom spaces under a forty-five degree roof slope. A series of ground floor, mid-floor, wall and roof panel 'sandwiches', or 'cassettes', are specified for offsite construction; this building approach allows for greater prefabrication.

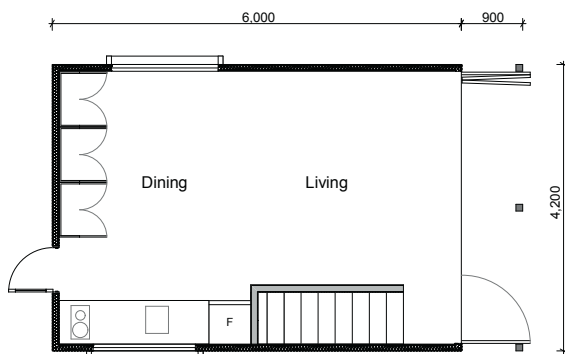
45 Degrees' traditional gable roof makes this pavilion-like design sympathetic to many established suburban contexts.

What the judges said "This shows an exciting use of vertical space, and options that allow for great space utilisation. Cassette construction brings good efficiencies."

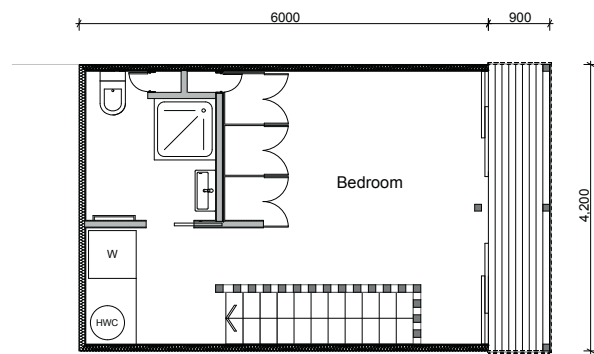
DESIGNER'S PALETTE BY RESENE



45 DEGREES PLAN



SNUG Ground Floor



SNUG First Floor



EASY

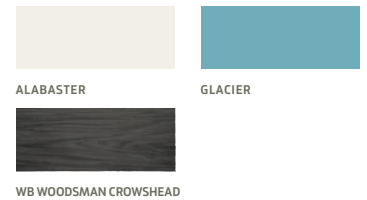
FINALIST
snughome.nz



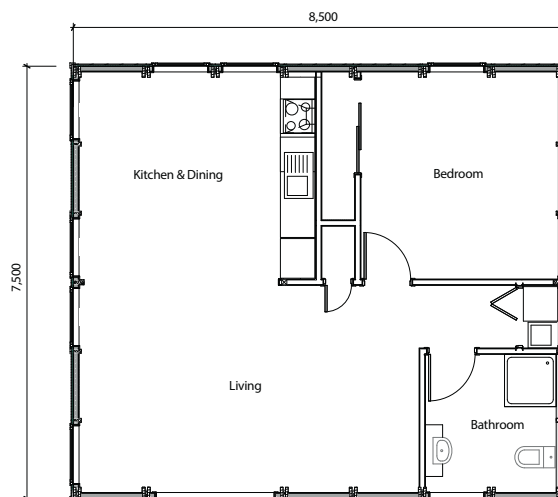
Easy is ideal for difficult-to-access sites as it is a SNUG home that can be brought to site in small panels and components that can be lifted by two people. It can even be supplied in kitset form for self-build. This is a highly adaptable, modern and energy-efficient infill housing solution.

What the judges said "This great little home offers spacious, open plan living with lots of windows to provide a beautifully sunny living environment. The large bedroom and well-configured bathroom should easily accommodate most occupants no matter what age or stage in life they may be. The traditional design will complement any small site."

DESIGNER'S PALETTE BY RESENE



EASY PLAN





PĪ HONI

FINALIST
snughome.nz



Pi Honi represents the future by using robotic fabrication of its panels, reducing overheads in its production. Two dynamic multi-tooled robotic arms allow tools and materials to be brought to each panel, as opposed to the panel progressing through a traditional production line. This reduces the need for specialised machinery, space and overheads. Designed to complement diverse environmental conditions, Pi Honi is flexible in its accommodation

options. It can also fit utility spaces such as a carport or garage. Vertical development is a matter of stacking its units to create low-rise infill solutions.

What the judges said "The angular exterior wall kink provides visual interest that enhances rather than compromises function. Outdoor space and shading has been considered."

DESIGNER'S PALETTE BY RESENE



WB WOODSMAN CROWSHEAD



WB WOODSMAN NATURAL

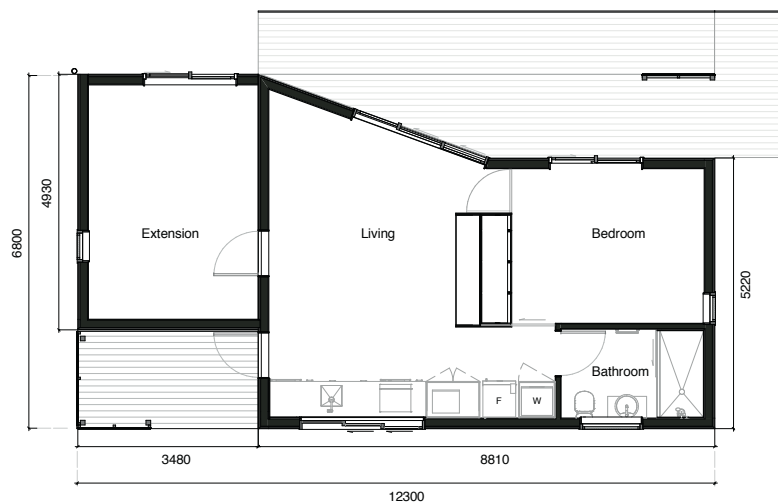


WHITE POINTER



WOODSMAN WHITEWASH

PĪ HONI PLAN





PORCH

FINALIST
snughome.nz

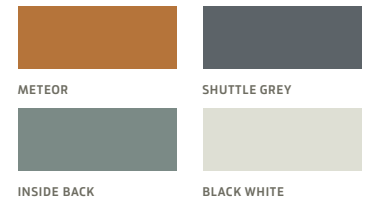


The **Porch** design can adjoin your existing residence or provide standalone accommodation. Multiple modules provide extra space as needed: there are variations to create a studio without kitchen, right through to a self-contained two-bedroom unit. Decks and balconies can be attached, as can stairs for sloping sites. The elevated option can straddle narrow unused parts of your section, even at your frontage. This provides a multipurpose covered

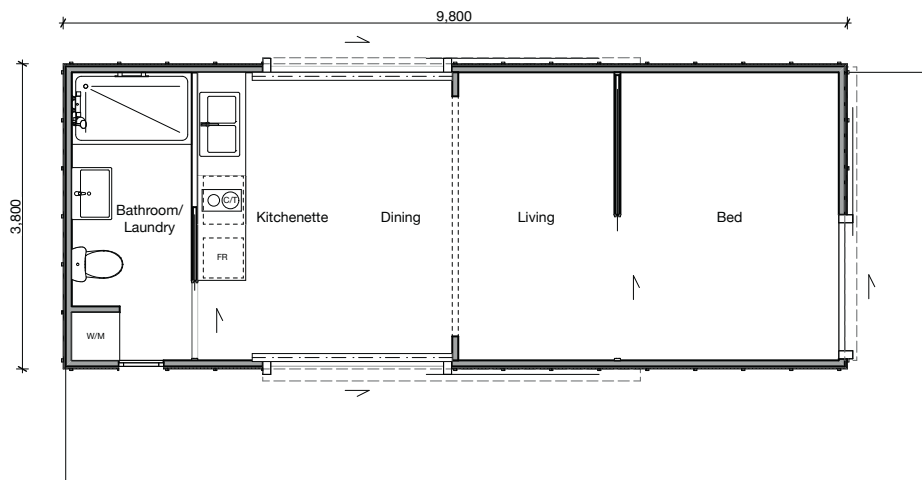
outdoor space beneath, so it comes with its own carport. Porch also lends itself to a variety of cladding options.

What the judges said "Consideration of this SNUG home design to be connected to sites was exceptional. Simple and robust, real consideration of the space around, as well as flexibility within is clearly evident."

DESIGNER'S PALETTE BY RESENE



PORCH PLAN





SANCTUM

FINALIST
snughome.nz



Sanctum's stylish offset roof ridge would make a distinctive addition to any backyard, and its varied façade with timber battens will integrate it well into a natural environment such as a garden. Its dimensions are perfect for difficult access as prefabricated parts can be walked down narrow access-ways between properties. Featuring an open-plan interior, the exterior references the vernacular of a veranda: encompassing outdoor

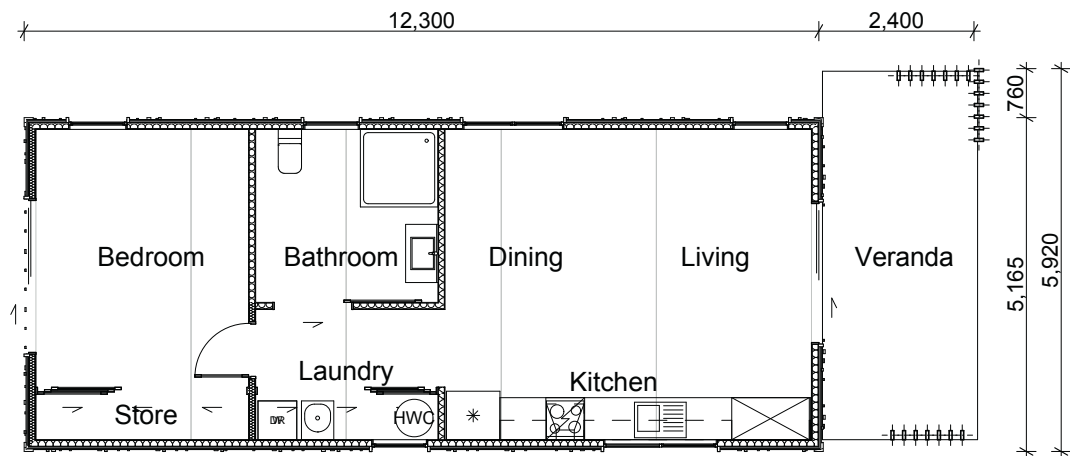
living and connection to land, family and neighbours. Non-load bearing walls are flexible in size and location, and external walls can be specified in length as needed.

What the judges said "A clearly resolved and buildable scheme. Its tidy internal layout with cabinetry lined up along the back wall will help create better flow."

DESIGNER'S PALETTE BY RESENE



SANCTUM PLAN





WHITEBAITER

FINALIST
snughome.nz



This SNUG home draws on the tradition of the small cribs or baches used by 'baiters' – people devoted to the great Kiwi pastime of netting whitebait. The entranceway of the **Whitebaiter** even has a mudroom with coat and shoe storage. The thoughtful use of space continues in a sleeping loft with wardrobe storage beneath, and an elevated reading nook in the living area that could double as

storage or a child's bed. The Whitebaiter is true low-energy architecture, designed to take little energy to heat or cool. There is the added option of installing a wood-burner.

What the judges said "A very clever design. Simple, yet well thought-through with an emphasis on economic use of space."

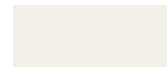
DESIGNER'S PALETTE BY RESENE



LIGNITE

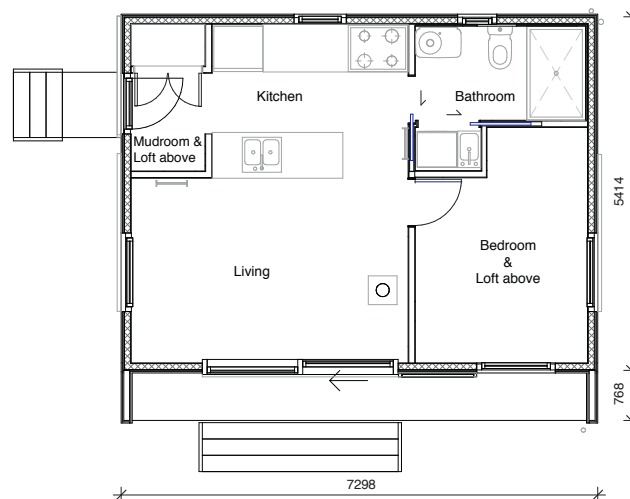


WOODSMAN WHITEWASH



ALABASTER

WHITEBAITER PLAN





The SNUG homes are brought to you by PrefabNZ + these prefabulous partners



New Zealand
Institute of Architects
Incorporated



About PrefabNZ

PrefabNZ is the heart of innovative construction in New Zealand.

Our non-profit membership organisation is passionate about how prefabrication, innovative construction and new technologies can achieve a better built environment.

Higher-quality, smarter, greener, safer, faster, healthier, higher-performance and more efficient building solutions.

Learn more at prefabnz.com

snughome.nz

Colours as close as printing process allows. View a Resene colour chart or testpot before making your final choice.