



Resene
the paint the professionals use

Other cool ideas

Create clouds

Clouds can be a very relaxing finish to any room, making it seem airy and giving something to look at when stuck in bed during the day. To create a cloudy sky, apply a base colour of blue to the full ceiling area and allow to dry. Then use a sponge to lightly apply the white clouds. Dip the sponge in the white paint, then dab onto paper to remove excess paint before applying the sponge to the ceiling. Just add a few clouds at the start and allow to dry – you can always add more clouds later, but it will be much harder to take them away!

Super stencils

Add your favourite pictures, designs or shapes to the walls and create themed walls in next to no time. Here's how...

1. Find or make the stencil you want to use. Stencil pictures can be downloaded from the Resene website, www.resene.com/stencils, traced onto light cardboard and cut out to get you started. Tape the stencil to the wall using low tack masking tape.
2. Once you've got your stencil, dip your brush into your chosen paint colour. Dab the brush on a paper towel to get rid of any extra paint then place your brush at the edge of the stencil opening and apply the paint by dabbing the surface lightly or moving the brush in a circular motion.
3. Repeat step two until you get the colour intensity you desire.

You can also stencil using a roller. Instead of step two and three above...

2. Get a small roller, moisten it with water and squeeze it between paper towels to dry the excess water off leaving a very slightly damp roller.
3. Put a small amount of the paint colour you plan to use on a paper plate or in a flat bottomed low-sided container. Roll the roller through the paint and then onto a clean part of the plate or container (or use a separate sheet of paper) to ensure the paint is distributed evenly on the roller. Roll back and forwards across the cut-out area of the stencil. Make sure you roll in several different directions to get the best coverage.

See stripes

Stripes can be a neat effect for a room, allowing you to use two (or even more) favourite colours all over the room.

Paint one colour over the complete area where you wish to create stripes and allow to dry. To create stripes, place low tack masking tape along the edge where you want the stripe to go. Make sure the tape is well pushed down on the edges otherwise the paint will creep underneath it. The best idea is to buy tape that is the same width as the stripes you want to create, as this will make your job easier. Apply as many pieces of tape as you want to create stripes.

Paint the second colour over the exposed area and onto the taped area. Carefully remove the tape before the paint dries.

If you wish to paint wider stripes and can't find wide enough tape, simply place tape down either side of the area where you wish to create stripes and then paint between the two pieces of tape and just slightly onto the taped area. Be careful not to paint beyond the tape. Carefully remove the tape before the paint dries.



Resene, proud to support Plunket.

Colour	Colour code	Tone	Approx LRV%	RGB	Undercoat (for metallics)
Ballerina	V78-058-342	W	54	232 153 190	
Bedazzle	M54-081-355	SA	22	156 67 103	Rouge
Blue Jeans	B53-058-263	L	21	78 101 144	
Bright Spark	Y83-168-082	Y	61	243 190 51	
Buzz	G92-140-093	L	80	251 235 80	
Candy Floss	R46-132-022	U	15	159 38 61	
Carnival	V43-099-337	MG	13	126 42 101	
Chaos	R44-148-034	R	14	146 42 49	
Colour Me Pink	R46-109-000	MG	15	169 12 80	
Dancing Girl	V64-080-301	P	33	148 112 196	
Dizzy Lizzy	G76-163-118	Y	50	129 202 43	
Dreamer	B91-019-237	W	79	211 229 239	
Enchanted	M60-078-344	SA	28	146 58 100	Rouge
Fairylight	V87-030-296	W	69	213 199 232	
Ferris Wheel	V53-093-303	L	21	114 74 161	
Fizz	Y84-198-087	Y	64	245 204 35	
Flower Power	V83-035-325	W	62	222 183 217	
Funtasia	M48-091-301	SA	17	76 51 113	Daisy Bush
Get Reddy	R49-160-036	R	17	173 53 57	
Glitterbug	M50-100-022	SA	18	169 42 55	Pirate Anise
Go Go Go	M73-080-131	SA	45	118 173 76	
Gobstopper	V44-095-303	M	14	88 53 128	
Hi Jinx	O69-171-062	Y	41	229 127 61	
Hopskotch	V67-072-354	L	36	205 109 147	
Kermit	G55-122-138	Y	23	54 129 54	
Lickety Split	G82-173-113	Y	60	163 217 45	
Lucky Dip	G91-067-117	W	79	209 239 159	
Neva	G80-187-101	Y	58	198 214 13	
Orang-atan	O61-167-048	Y	29	197 79 51	
Pink Panther	R53-084-002	D	21	180 56 100	
Pretty In Pink	R90-016-359	W	76	239 214 218	
Princess	R84-034-358	W	65	237 184 199	
Razzamatazz	R37-107-030	MG	10	112 31 40	
Rocket	R41-126-033	R	12	134 40 46	
Sea World	B40-097-275	D	11	50 63 117	
Sherbert	G89-055-110	W	74	210 224 158	
Shooting Star	G90-165-091	M	76	253 227 54	
Sing Song	Y91-055-084	W	78	246 224 164	
Slipper	R94-008-031	W	86	244 234 228	
Smiles	G94-108-095	P	84	251 240 115	
Snap	B70-088-235	P	41	91 160 208	
So Cool	M83-003-232	SA	62	158 160 161	Silver Chalice
Soft Whisper	Y94-028-083	W	85	248 234 202	
Softly Softly	Y96-015-089	W	90	241 235 217	
Solid Gold*	M69-066-078	SA	39	146 119 72	Apache
Splat	B84-042-243	W	65	165 206 236	
Splish Splash	B48-102-250	D	17	41 89 139	
Sports Star	B62-098-238	L	31	61 133 184	
Sugar And Spice	M67-062-336	SA	38	155 98 139	Strikemaster
Super Duper	B53-094-264	L	21	66 99 159	
Surfs Up	B29-058-284	U	6	31 33 66	
Three Wishes	B89-022-266	W	74	210 218 237	
Top Secret	G70-153-114	Y	41	122 172 33	
Tutti Frutti	G82-077-130	P	60	159 211 133	
Unicorn	V72-063-292	W	44	159 144 208	
Wet N Wild	B49-089-260	U	12	37 67 117	
Wham	G69-148-130	Y	39	95 179 58	
YabbaDabbadoo	G60-087-202	M	28	0 139 151	
Yeehaa	M59-082-236	SA	28	0 108 152	Optimist
Zappo	V83-028-285	W	62	196 192 226	
Zoop De Loop	M52-085-267	SA	20	37 70 131	Tory Blue

* H/O order only
Key: D = Deep G = Green L = Light M = Mid
 MG = Magenta O = Ochre P = Pastel R = Red
 SA = Silver aluminium U = Ultra deep W = White Y = Yellow 2

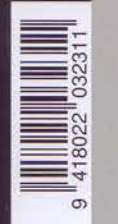
Note 1: The approximate light reflectance value (LRV) of a colour indicates the amount of visible light that a colour will reflect. Black has a light reflectance value of 0% and absorbs all light. The surfaces are consequently very dark and can get very hot. In contrast, white has a light reflectance value of 100% and keeps a building light and cool. All colours fit within these two extremes. A Resene CoolColour™ is formulated to reflect more of the sun's energy, improving the colour's heat and total solar reflectance (TSR) properties compared to a normal colour, keeping the coating, substrate and building cooler.

Note 2: Mid to dark colours are not suitable for some exterior substrates and if used may cause damage to the substrate, such as warping, checking and premature failure. Always check with the substrate supplier prior to commencing any work to ensure colour selections fit within their guidelines. Resene also manufactures Resene CoolColour technology and this may increase the colour range that can be suitable over some heat sensitive substrates - refer Resene for further information.

Note 3: Tones listed above are subject to change if colours are reformulated.

Note 4: Colours may be available in selected products or sizes only. Check with Resene ColorShop or Reseller staff to ensure your selected colour is available in the product and/or size you require.

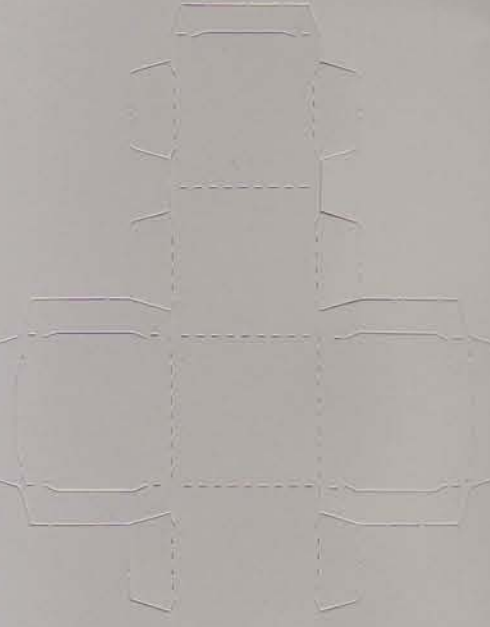
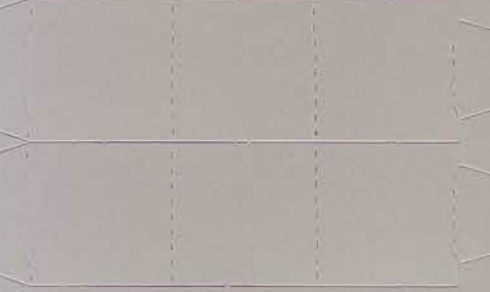
Note 5: This colour chart is finished with Resene SpaceCote Low Sheen waterborne enamel, a product ideally suited to kitchens, bathrooms and broadwall areas. Metallic chips are finished in Resene Enamacyl Metallic.



C1314 2/12

Colour chip isolator

Detach and place over selected colour to view your choice on a neutral background without it being affected by surrounding colours.



Resene Super Duper
 Resene Bright Spark



Get coloured with Resene KidzColour

Strongwilled, excitable and opinionated – today's kids know just what they want so to simplify choice for kids and their parents alike, Resene presents Resene KidzColour – a range of hues and metallics designed for kids of all ages.

Colour options have been tested with variously aged kids giving a range focused on bright bold, full chroma hues and metallics – perfect as a statement by themselves or combined with another equally bold hue for an invigorating scheme.

For those with a newborn in the house, Resene KidzColour also includes a smaller palette of soft pastels that may be mixed and matched with each other or used as a base for one of the brighter accent colours.

Be the envy of all your friends and get coloured with Resene KidzColour! Best of all, because it's just a coat of paint, you can add more colours or repaint when favourite colours change.

The Resene KidzColour range also includes favourite effects finishes, such as Resene Magnetic Magic, Resene Blackboard Paint, Resene Pearl Shimmer and Resene Pixie Dust. Plus you can download stencil images from the Resene website, www.resene.com/stencils, and create stencilled masterpieces for just the cost of a different colour of paint.

Tips and tricks

- Think ahead... kids grow fast and tastes change rapidly. So make sure your plan incorporates options for the future. If you don't mind completely revamping the room in a few years, you can opt for a fully themed room... but be prepared to change it later!
- Latest trends and fads can be incorporated using cushions, posters, wallpaper borders and toys that can be easily changed as the trends and fads do.
- Check out what others have done in the past in the online Resene Decorating inspiration gallery on the Resene website, www.resene.com/inspirationgallery, and use their ideas as inspiration for your own.
- Kids tend to spend a lot of time playing on the floor, so opt for soft flooring where possible or ensure rugs have non-slip underlay. Avoid anything too light in colour as the occasional accident is bound to occur!
- Walls and doors will also be in for a workout so opt for a washable finish, such as Resene SpaceCote Low Sheen waterborne enamel to make cleaning up marks easy.
- Check out Resene EzyPaint virtual painting software and try out your favourite colour scheme options without lifting a paintbrush. Available free online from the Resene website, www.resene.com/ezypaint. Resene EzyPaint is suitable for kids to use, provided you don't need the computer back for a while!
- Always try out the colour scheme you plan to use with Resene testpots just to make sure it's what you want before you start painting all the walls.
- There are lots of great effects you can create using effects finishes, stamps, sponges and general arts and crafts activities to add wall art, pencil holders and more to the finished room, so let your imagination run wild. Check out our tips on some of the finishes you may like to try out for yourself to get you started.
- Kids tend to have firm favourites when it comes to colours – don't be afraid to let them go with their favourites – you may just be surprised how much you like the finish!



Room sets created by Jeanette Troon



Finish!

Razzamatazz R37-107-030 69

Get Reddy R49-160-036 68

Go back 3! 67

Orang-atan 061-167-048 66

Bright Spark Y83-168-082 65

Wham G69-148-130 64

Go forward 2! 63

Extra turn! 54

Rocket R41-126-033 55

Chaos R44-148-034 56

Candy Floss R46-132-022 57

Hi Jimx 069-171-062 58

Fizz Y84-198-087 59

Lickety Split G82-173-113 60

Top Secret G70-153-114 61

Kermit G55-122-138 62

Carnival fun! Take a climb 55

Total Chaos! Down you go 56

Royal move! Take a climb 58

A cool treat! Take a climb 64

Miss the lilypad! Down you go 62

Glitterbug M50-100-022 53

Carnival V43-099-337 52

Colour Me Pink R46-109-000 51

Bedazzle M54-081-355 50

Princess R84-034-358 49

Shooting Star G90-165-091 48

Miss a turn! 47

Neva G80-187-101 46

Go Go Go M73-080-131 45

Chased by a glitterbug! Down you go 53

Looking good! Take a climb 50

Pink Panther R53-084-002 36

Enchanted M60-078-344 37

Go back 3! 38

Pretty In Pink R90-016-359 39

Smiles G94-108-095 40

Buzz G92-140-093 41

Lucky Dip G91-067-117 42

Tutti Frutti G82-077-130 43

Dizzy Lizzy G76-163-118 44

Do some baking! Take a climb 36

Buzz attack! Down you go 41

Great tunes! Take a climb 42

Hopskotch V67-072-354 35

Sugar And Spice M67-062-336 34

Ballerina V78-058-342 33

Slipper R94-008-031 32

Softly Softly Y96-015-089 31

Soft Whisper Y94-028-083 30

Sing Song Y91-055-084 29

Sherbert G89-055-110 28

Miss a turn! 27

A yummy treat! Take a climb 33

Hole in slipper! Down you go 32

Hit a home run! Take a climb 30

Too many treats! Down you go 28

Extra turn! 18

Gobstopper V44-095-303 19

Dancing Girl V64-080-301 20

Flower Power V83-035-325 21

Splat B84-042-243 22

Sports Star B62-098-238 23

Splish Splash B48-102-250 24

Yeehaa M59-082-236 25

Yabdadabadoo G60-087-202 26

Hayfever attack! Down you go 21

Looking stylish! Take a climb 24

Ferris Wheel V53-093-303 17

Funtasia M48-091-301 16

Unicorn V72-063-292 15

Fairylight V87-030-296 14

Zappo V83-028-285 13

Go back 1! 12

Three Wishes B89-022-266 11

Blue Jeans B53-058-263 10

Sea World B40-097-275 9

Take a tumble! Down you go 15

Dreams come true! Take a climb 14

Super move! Take a climb 11

Fall into the water! Down you go 9

Start!

Solid Gold M69-066-078 1

So Cool M83-003-232 2

Dreamer B91-019-237 3

Snap B70-088-235 4

Super Duper B53-094-264 5

Wet N Wild B49-089-260 6

Surfs Up B29-058-284 7

Zoop De Loop M52-085-267 8

Once you've chosen your favourite colours, join my friends and I in a game of ladders and splats!



Try out these cool effects!

Get writing
 Let your children's ideas loose on their walls with Resene Write-on Wall Paint. Once dry and cured you can use whiteboard markers or liquid chalk to write all over the wall without damaging the surface. And when it's time to delete an idea just grab a soft cloth or whiteboard eraser, rub out the marker and start again. Simply apply Resene Write-on Wall Paint over your existing light coloured wall paint or over your new wall colour. With Resene Write-on Wall Paint there's no limit to your children's ideas.

Simply magic
 Resene Magnetic Magic is a magnetic base coating loaded with iron oxides. Lots of fun for children of all ages and handy in home offices and other areas around your home. Best used with rare earth magnets for maximum magnetic effect.

Chalk artist
 Resene Blackboard Paint is a premium scrubbable waterborne coating for all types of interior and exterior smooth surfaces where a hardwearing blackboard coating is required. It is easy to apply – in fact the hardest part is keeping would-be chalk artists away long enough to give the paint time to dry before they start covering it up with chalk!

Shimmer space
 Resene Pearl Shimmer is a waterborne pearlescent glaze ideal for creating sparkled features. Perfect when a little space dust or fairy dust is needed. Either apply direct to existing painted areas for a shimmer finish or get your local Resene ColorShop or Reseller staff to add a touch of tinter and create unique two tone effects of solid colour with a shimmery colour topcoat. The most shimmering results will be seen over dark and complex hues as these provide the greatest contrast to the shimmering pigments.

Get crackled
 Create cool crackled finishes – pick your favourite colours and paint one onto the surface. Allow to dry, paint a coat of Resene Crackle Effect then leave to dry. Apply your second favourite colour and stand back and watch while the Resene Crackle Effect shrinks and cracks to reveal the first colour. Seriously cool!



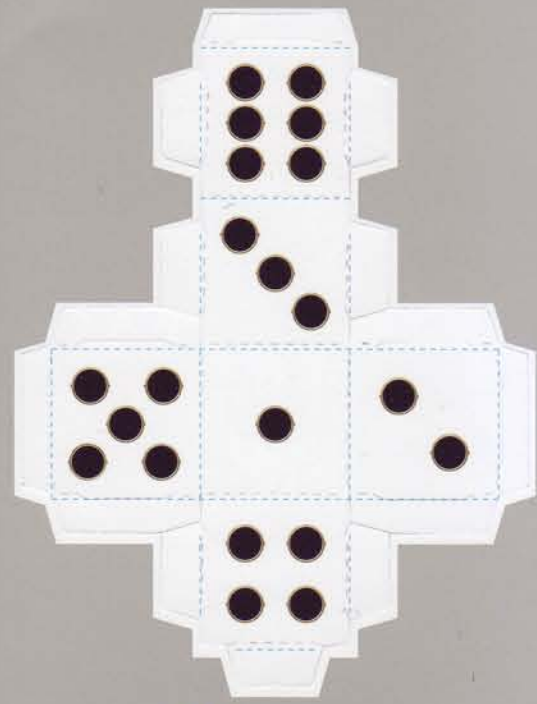
Playing counters

1. Punch out characters.
2. Fold into triangle shape. The blue lines are the fold lines.
3. Tuck in tabs to secure.



Playing dice

1. Punch out dice.
2. Fold into dice shape. The blue lines are the fold lines.
3. Tuck in tabs to secure.



...and then you're ready to play! Good luck!

