



Light versus bright

From the subtle to the adventurous – these homes showcase two different approaches to colour, with paints from Resene

Whether you want to accentuate a freestanding wall, or contrast key structural elements, colour is one of the best ways to highlight a home's architectural features.

The designers of the homes featured on these pages chose two very different colour palettes – one light and subtle, the other bold and adventurous.

For the Santa Barbara Homes project on this page, Resene Quarter Tea was specified for the walls, with Resene Merino for the ceiling. The bedroom features

Resene Tea on the walls, again paired with Resene Merino. The company says the colours, from The Range Whites & Neutrals fandeck, provide a bright and airy look, and complement the oak timber beams and other natural materials in the home.

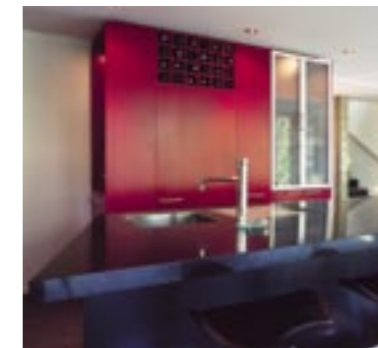
For the Wanaka holiday home shown on the facing page, designer Gary Todd contrasted Resene Sea Fog with Resene Pohutukawa. This bright red shade threads its way through the house, providing colour continuity and a vibrant contrast to the gravel-grey tones.



Both interiors were painted in Resene SpaceCote Low Sheen, a low-odour, waterborne enamel, which is well suited to kitchens, bathrooms and broadwall areas. Resene marketing manager Karen Warman says this paint provides a durable, washable enamel-like finish.

"Combined with a skim coating of Resene Broadwall Surface Prep, or 3 in 1, a great finish is easy to achieve," she says.

For further information, visit a Resene ColorShop or phone 0800 Resene (737 363). Website: www.resene.co.nz.



Facing page, top: This house, built by Santa Barbara Homes, features colours from the Resene The Range Whites & Neutrals fandeck. Kitchen walls are painted in Resene Merino. Both shades enhance the light, airy interior created by a roof that appears to float above a band of high windows.

Facing page, lower: This bedroom in the same house features walls in Resene Tea.

This page: Gary Todd Design opted for the deep red hue of Resene Pohutukawa to create bold accent walls in this Wanaka holiday home.