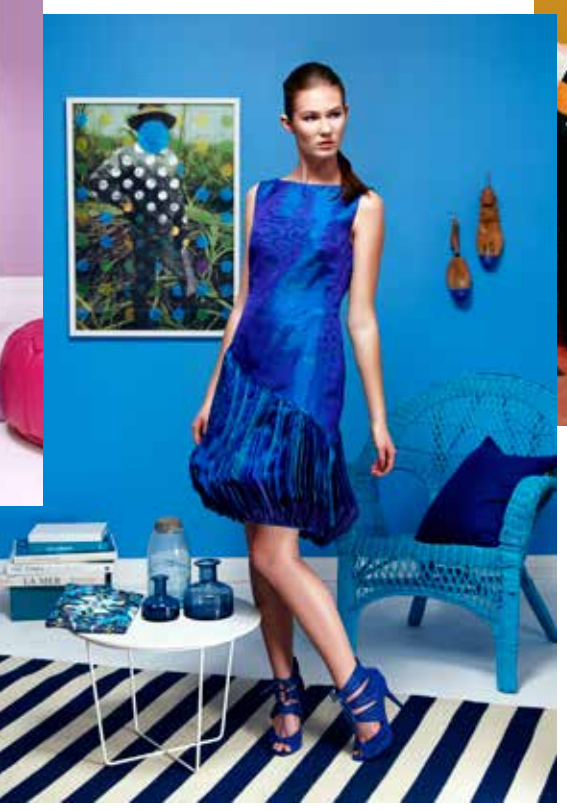


# IN LIVING COLOUR

NEW ZEALAND FASHION TECH CREATE HOME INSPIRATION A WORLD AWAY FROM BASIC BEIGE OR BORING BLACK

PHOTOGRAPHS BY MIKE ROOKE  
ROOM SETS & STYLING EMILY SOMERVILLE-RYAN



**B**anish the black and nudge aside the neutrals; it's time to embrace colour. This year up-and-coming designers from New Zealand Fashion Tech joined forces with paint specialist Resene to colour our world a little brighter.

Val Marshall-Smith, academic director at NZ Fashion Tech, says colour is all about having confidence in our choices and not being afraid to show who we really are. This year her students were tasked with transforming a traditional hand-woven silk sari, with its history of shape, pattern and draping, into a contemporary-chic garment worthy of the runway. Each sari's jewel-like tones were inspired by a Resene paint colour.

Karen Warman of Resene says for many years paint colours have been inspired by fashion trends. "It's a nice twist to reverse the order and have paint colours used as inspiration for the catwalk."

While the top 10 designs will be showcased at New Zealand Fashion Week, there's no need to keep gorgeous colour confined to the catwalk.

Here we showcase six of the stunning designs, and show you how to bring those eye-catching shades into your home. Whether you want to add a dash of drama, update your accents or go full flourish, our expert advice will help you dip into the wonderful world of colour. >>



# Purple reign

Design student Jimmie MacKay chose a rich, purple-toned silk, which was paired with the colour Resene Sassy for his tailored coat-dress creation, and the result is a powerful fashion statement. Decorating with purple, the colour of royalty, is right on trend. If you love the hue, go all out in varying shades of purple. If you have a large space, then a darker purple on the walls will make a real impact. However, if you're tight on space, stick to one dark feature wall. You can then work the vivid purple into your accessories without overwhelming your room. Purple is also a great choice in the bedroom as the colour is said to bring passion to a room.



Accent: Resene Sassy

Walls: Resene Wonderland

Accent: Resene Séance

## Resene tip

Purple gives a level of richness few other colours can achieve. A true violet purple is certainly strong, but if you add some deep red, you get eggplant and mulberry colours, which may be easier to work with. Rich purples look great with any metallic tones. Timber has similar amber tonings to gold so it also looks good alongside purple, whether you use it on the floor or through your furniture.

WALL COLOUR IN RESENE 'WONDERLAND', FRONT CHAIR IN RESENE 'SÉANCE', JARS FROM JUNK & DISORDERLY, IN RESENE 'SASSY' AND RESENE 'SÉANCE', AND FLOOR AND SKIRTING IN RESENE 'ALABASTER', 'MEETING HOUSE' SCREENPRINT WITH UNIQUE WATERCOLOUR BY MARTIN POPPELWELL, \$2500, COURTESY OF MELANIE ROGER GALLERY. ELEVATION CAFE TABLE BY DAVID MORELAND, \$1711, AND TALL TANK FLOOR LAMP BY ESTABLISHED & SONS, \$2621; BOTH FROM SIMON JAMES DESIGN. WISHBONE CHAIR BY HANS J WEGNER FOR CARL HANSEN + SON, \$1600, FROM CULT. FRUIT STAND, \$129, FROM MACY HOME. ROUND FELT RUG, \$180, FROM COLLECTED. POUFFE, \$250, FROM REPUBLIC. SHOES, \$235, SOL SANA.

**Contrast with** Resene Tarot to ground the purple, and Resene Niagara for extra freshness.



# Clockwork orange

A cutting-edge cape dress, inspired by the paint colour Resene Rock Spray, is the result of 21-year-old fashion student Rachel Thessman's creative vision. Although a bold tone, the strong design brought sophistication to the colour, which is a lesson to take note of when decorating with orange. Done in the right way, orange can create just as much attention as a red interior but with less of the aggression. The key with a successful orange decorating scheme is to keep your finished look in mind at all times. Warm orange tones are best paired with rustic furniture and accessories, while cooler orange hues work more cohesively when combined with sleek, modern pieces. >>



Accent: Resene Grenadier

Walls: Resene My Sin

Accent: Resene California

## Resene tip

Orange has a cool retro appeal that goes with mid-century style interiors. Because it's such a strong colour, orange has often been reserved as an accent for feature walls and splashbacks. You can go all out in the kitchen and living area though, where orange's warmth can create an inviting social space.

WALL COLOUR IN RESENE 'MY SIN', CONSOLE TABLE IN RESENE 'GRENADIER', BOXES IN RESENE 'CALIFORNIA', FLOOR AND SKIRTING IN RESENE 'ALABASTER', RIVER PRINT BY EMMA HAYES, \$399, FROM CULT. 'BERLIN' RUG BY BLEUX, FROM \$4873, FROM DESIGNER RUGS. PEEL COAT STAND BY EARNEST WORKSHOP, \$950, AND AVALON CHAIR BY SWEDESE, \$4290 INCLUDING FABRIC, BOTH FROM SIMON JAMES DESIGN. FORM BOWL DEEP SET (LARGE), \$369, CAST MINI JACK (ON TABLE), \$125, AND CAST FACTORY (UNDER TABLE), \$224, ALL ECLECTIC BY TOM DIXON FROM SIMON JAMES CONCEPT STORE. 'CHECKS' UMBRELLA, \$50; SCARVES, \$80 AND \$130; HINEA BAG, \$60; POLYCHROME CUSHION COVER, \$50; LAMP, \$149, AND HAT, \$139; ALL FROM CITTA DESIGN. SHARPENER DESK TIDY, \$80.50, FROM MACY HOME. SHOES, \$320, FROM MIMCO.



**Contrast with** Resene Baltic Sea to create depth and Resene Carpe Diem to add a golden hue.



# Seeing red

Ashleigh Price, 23, a student at Fashion Tech's Wellington campus, designed a feminine yet strong dress from her Indian silk. The design, inspired by striking Resene Pirate, showcases the impact of contrasting colour. If a red interior is what you're looking for, opt for shades with more raspberry tones to keep the look current. The pinker version of traditional red is perfect for those who like bold colour choices. A good decorating rule to keep in mind for colour balance is the 60-30-10 theory – the dominant (wall) colour is 60%, furniture colour is 30% and accessories make up the remaining 10%. Keep this idea in mind when opting for complementary or contrast shades in one room.



WALLS IN RESENE 'CABARET', PLINTH IN RESENE 'CANDY FLOSS', FINIALS AND EGG CUP IN RESENE 'HAVOC', FLOOR AND SKIRTING IN RESENE 'ALABASTER', 'TRAVELATOR' OIL ON LINEN BY RUTH CLELAND, \$6500, COURTESY OF MELANIE ROGER GALLERY. EGG CHAIR BY ARNE JACOBSEN FOR FRITZ HANSEN, \$13,371; PUKU CUSHION, BY KATE STOKES, \$1255; AND KALEIDO TRAYS BY HAY, FROM \$31; ALL FROM CULT. YELLOW FLYOVER TABLE BY RESIDENT, \$2020, FROM SIMON JAMES DESIGN. RED VELVET MULBERI CUSHION, \$79; WIRE PINEAPPLE, \$25; CERAMIC PINEAPPLE, \$79; AND YELLOW SKULL, \$99; ALL FROM REPUBLIC. 'ARMADILLO&CO' CASABLANCA RUG IN CRIMSON MUSK, \$1095, FROM THE IVY HOUSE. LEATHER GLOVES, \$80, FROM REDCURRENT. LEON BOOK, \$18, FROM MACY HOME. SHOES, \$299, FROM KATHRYN WILSON. RING, \$329, FROM KAREN WALKER. NECKLACE, \$39, FROM RUBY.

**Contrast with** Resene Buttercup to keep things happy and hints of Resene Cod Grey for a modern look.



# Oceans away

Traditional shades of green have made way for more fashionable tones of aqua and teal, which presented student Ting Yu, 27, with the perfect opportunity to create a unique show-shopper garment. Inspired by Resene Deep Sea, this elegant dress is both fashion-forward and glamorous.

Using these new hues in your home decorating scheme will allow you to create your own in-vogue look. This spectrum of colour has a colder-toned base, which means the result will be a room that is cool and calming, so it is best used in a space with lots of natural sunlight. With so much versatility in this colour range, a whole room can be created around the shade without the use of neutrals. >>



WALL COLOUR IN RESENE 'TRADEWIND', CHAIR FROM JUNK AND DISORDERLY IN RESENE 'SURFIE GREEN', SHELVES IN RESENE 'DEEP SEA', FLOOR AND SKIRTING IN RESENE 'ALABASTER', 'TIME GOING BACKWARDS WITH ASSISTANCE', AND 'PROUN FOR THE REGENERATION OF MINDS' MIXED MEDIA ON INKJET PRINT, BOTH BY LIYEN CHONG, \$2950 EACH, COURTESY OF MELANIE ROGER GALLERY. GREEN PHONE, \$199; AND SMALL BLUE LEON BOOK, \$18; BOTH FROM MACY HOME. DAN 300 CUSHION (ON CHAIR), \$110; AND ALL OTHER BOOKS FROM COLLECTED. HAY DESKTOP BOX BOXES, \$121 SET, AND HAY FEATHER PENS, \$16; BOTH FROM CULT. LADYLIKE BLUE BAG, \$99; AND PURSE MIGHTY, \$140, BOTH FROM REDCURRENT. BLUE NF VASE, \$75; BLUE NF JUG, \$33; CAM PARROT, \$89; BLUE OTTOMAN POUFFE, \$699; TURKISH BEACH TOWEL, \$269; AND BLUE VELVET MULBERI CUSHION, \$79; ALL FROM REPUBLIC. HEX OTTOMAN BY SIMON JAMES, FROM \$690, FROM SIMON JAMES DESIGN. 'ARMADILLO&CO' TEAL PILGRIM RUG, \$1254, FROM THE IVY HOUSE. SMALL GREEN VASES AND STRIPEY CUSHION, STYLIST'S OWN. SHOES, \$159, FROM MAX. BELT, \$25, FROM PORTMANS.

**Contrast with** Resene Scandal to add lightness and Resene Blackcurrant for a dash of drama.



## Resene tip

These mutable, magical washed blues and greens – the colours of the sea – are a strong and continuing trend: not surprising in a country with so much coastline. Don't be afraid of using more than one of these crossover colours in the same space. They look sensational together, in the same way the many tones of the sea give it depth, life and energy.



# Got the blues

Resene Deep Koamaru was the paint colour behind 20-year-old Mary Nguyen's design, a dramatic creation with strong Pacific ocean influences. Blue is also a clever choice when it comes to interior decorating, as it is a colour that can work in every room of your home. Depending on the shade of blue you choose - and the possibilities are endless - you can give the illusion that a space is larger or smaller than it is. Hues like cobalt, turquoise and ice blue have yellow in them, helping the painted area recede - and this makes your room look bigger. Tones of denim, ocean or slate blue, which have red in them, will do the opposite, allowing a space to feel cosy. Blue is said to promote a feeling of calm but also of focus, making it a good choice in areas like a home office.



ART DIRECTION LOUISE THOMSON FASHION STYLING SWE ROSS MODEL MCKENZIE AT CLIVE, STYLISTS ASSISTANTS PIP SPITE AND IMOGEN TEMMI

Accent: Resene Endorphin

Accent: Resene Toreo Bay

Walls: Resene Subzero

## Resene tip

So you thought blue was just for the boys? Think again. Apparently it's the least gender-specific colour around. Blue is predominantly a cool colour so it's ideal in sunny, north-facing rooms. It's a classic choice for bathrooms because of its feeling of cleanliness.

WALL COLOUR IN RESENE 'SUBZERO', CHAIR IN RESENE 'ENDORPHIN', SHOE LASTS FROM JUNK AND DISORDERLY DIPPED IN RESENE 'TOREA BAY', FLOOR AND SKIRTING IN RESENE 'ALABASTER'. GENERAL ECLECTIC BLUE BOTTLE VASES (MEDIUM \$20, SMALL \$15), AND MASON JAR, \$25, ALL FROM JUNK AND DISORDERLY. 'DEMETER'S MAN DISAPPEARING UNDER A FOG OF SPOTS' MIXED MEDIA ON INKJET PRINT BY LIYEN CHONG, \$3950, COURTESY OF MELANIE ROGER GALLERY. LINK SIDE TABLE BY SIMON JAMES, \$676, FROM SIMON JAMES DESIGN. 'ARMADILLO&CO' CARNIVAL STRIPE RUG (COLOUR PIRATE), \$929, FROM THE IVY HOUSE. DECORATE BOOK, \$69, FROM COLLECTED. ALL OTHER BOOKS AND CUSHION, STYLIST'S OWN. SHOES \$60, FROM BOOHOO.

**Contrast with** Resene Havelock Blue and Resene Geronimo for a hit of warmth.



# Fresh 'n' fruity

Auckland Fashion Tech student, Jamie Taylor, 20, took his creativity in a different direction by producing an elegant jumpsuit with his bold silk choice in a zingy lime green shot with gold. Unsurprisingly, his paint shade inspiration was Resene Citrus.

To stop the citrus theme overwhelming your space, team a bright wall colour with neutral furniture and save the pops of colour for your accessories. Remember yellows, greens, tangerines and even splashes of pink grapefruit fall into the citrus category. The end result will be an energetic space so opt for bold citrus tones in social areas of your home like the kitchen or living room. If you do want to carry the idea through to your bedroom, choose lighter tints of those in your main spaces and pair with crisp white for a calming effect. □



Accent: Resene Wild Thing

Accent: Resene Citrus

Walls: Resene Golden Fizz

## Resene tip

Yellow is one of the most vivid colours in the spectrum; when used on the walls of a room, it reflects off itself so the look of it intensifies. If in doubt, choose a softer, creamier yellow. Give the shade an acidic edge by adding a touch of green for sharp urban interiors.

WALL COLOUR IN RESENE 'GOLDEN FIZZ', BEER FLASKS FROM JUNK & DISORDERLY IN RESENE 'WILD THING', BOTTLE AND JARS FROM JUNK AND DISORDERLY IN RESENE 'CITRUS', FLOOR AND SKIRTING IN RESENE 'ALABASTER'. INK ON BOARD ARTWORKS 'SLANT III', 'SLANT I', 'SLANT V', 'SLANT II' BY KRISTY GORMAN, \$1950 EACH, COURTESY OF MELANIE ROGER GALLERY. FRAMED ARMCHAIR BY DAVID MORELAND, FROM \$1544, ZERO-IN COFFEE TABLE, \$2849, AND FOLD MEDIUM TABLE LAMP, \$619, BOTH BY ESTABLISHED AND SONS, ALL FROM SIMON JAMES DESIGN. 'ORBIT' RUG BY DINOSAUR DESIGNS, \$3905, FROM DESIGNER RUGS. EADIE STRIPED CUSHION, \$99, FROM REPUBLIC. SHOES, \$235, FROM SOL SANA. CUFF, \$35, FROM PORTMANS. RING, \$1779, FROM KAREN WALKER.

**Contrast with** Resene Bilbao and Resene Resolution Blue to ground the look.

