



# Masking Range & Selection Guide

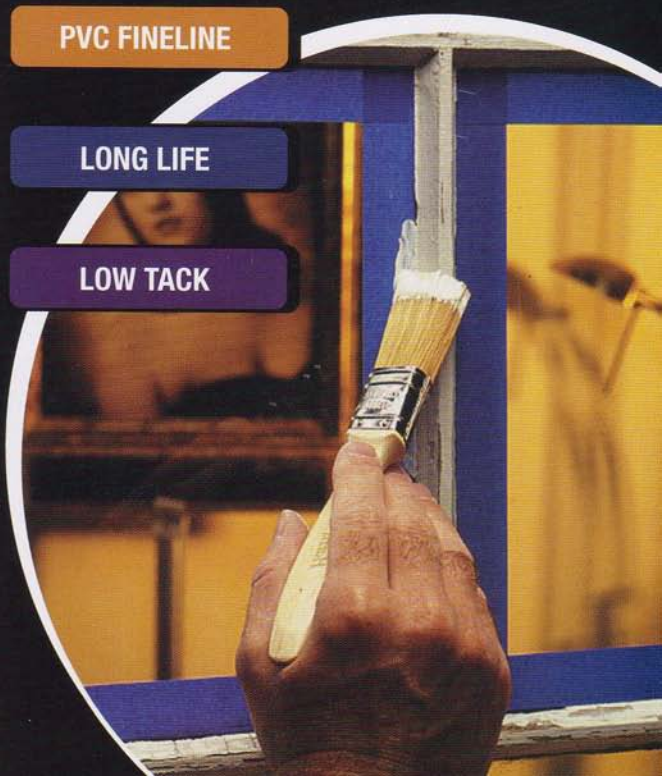
GENERAL PURPOSE

PROFESSIONAL

PVC FINELINE

LONG LIFE

LOW TACK





# COMPREHENSIVE MASKING TAPE RANGE

## WHY DO WE MASK?

Masking reduces the risk of ruining a painting job by over spray, accidental brush strokes and dripping.

## WHY RESENE?

- All Resene Masking Tapes are sourced from Sellotape® a leading manufacturer of New Zealand Masking Tapes.
- A masking tape for every situation or job big or small.
- Created with New Zealand conditions in mind.
- High Quality, innovative new masking products.
- Saves you time and money.

## WHICH TAPE TO CHOOSE

There are 4 factors that should be kept in mind when choosing a masking tape.

- **SURFACE TYPE** - What type of surface will be masked? This is the most important factor when selecting a tape.
- **TACK LEVEL** - What level of tack is needed? Choose a tape with a tack level compatible with the surface, this will ensure the tape will remove cleanly and easily without damaging the surface or the paint.
- **CLEAN REMOVAL TIME** - How long will the tape be applied for? If you are unsure how long you will keep the masking tape on for, it is always safer to choose a tape that has a longer removal time.
- **OTHER FACTORS** - There are many other factors that can influence the type of masking tape that best suits your job, such as, paint type, temperature, U.V. resistance, water resistance, interior, exterior, fine lines.

*Use this Guide to help select the right tape for the right job.*

## RECOMMENDED SURFACE TYPES

GENERAL PURPOSE

PROFESSIONAL

PVC FINELINE

LONG LIFE

LOW TACK

	GENERAL PURPOSE	PROFESSIONAL	PVC FINELINE	LONG LIFE	LOW TACK
<b>COATED</b>					
Over 30 days old (cured)	Yes	Yes	Some Surfaces	Yes	Yes
Less than 30 days old (uncured)	Not Recommended	Lacquered Surfaces*	Not Recommended	Lacquered Surfaces*	Yes
<b>UNCOATED</b>					
Delicate or damageable	Not Recommended	Wall Coverings Solid Vinyls*	Not Recommended	Wall Coverings Solid Vinyls*	Yes
Non-damageable	Yes	Yes	Yes	Yes	Yes
* Test in an inconspicuous place prior to use					
Tack Level	High	Medium	High	Medium	Low
Clean Removal Time	24 Hours	5 days	10 days	14 Days	3 days
Conformability to irregular surfaces	Very Good	Excellent	Good	Very Good	Excellent
Hand Tearable	Yes	Yes	No	Yes	Yes
Indoor	Yes	Yes	Yes	Yes	Yes
Outdoor	No	No	Yes	Yes	No
Special Properties	-	Solvent Resistant Tear Resistant	U.V Stable Moisture Resistant	U.V Stable	Safe Release

**NOTE:** Once paint has been applied, remove masking tape as soon as the paint is dry. All products in the Range are individually packaged in compact protective sleeves.

**Common product uses and applications are printed on all packs.**



## GENERAL PURPOSE

An industry standard crepe paper general purpose masking tape. This tape has excellent conformability to curves and irregular surfaces, it is also thin enough to avoid excessive paint build up on the edges of the tape. It is ideal for a wide range of short term masking applications, and is also great for temporary holding applications and craftwork.

## NEW PROFESSIONAL

A professional grade masking tape for use in professional painting and major DIY projects. Professional 5 Day Mask is coated with a special adhesive that leaves a professional and clean finish on a wide variety of surfaces. Professional is tear resistant and has excellent conformability.

## PVC FINELINE

PVC FineLine has so many features that they can't all fit on the label, as this masking tape not only leaves a perfect fine line clean edge, it is resistant to moisture, and can be used on a wide range of surface types. PVC FineLine is ideal for exterior painting, marine applications and spraying applications.

## LONG LIFE

For long term DIY and professional masking projects. This U.V resistant tape can be removed easily and cleanly for up to 14 days (7 days in extreme U.V exposure).



## LOW TACK

A low tack masking tape that is ideal for delicate or sensitive surfaces, such as wallpaper or newly painted dry surfaces. LowTack has been specifically designed for second coat painting and is ideal for use with varnishes. LowTack removes easily and leaves no adhesive residue.

NEW

## Sellotape® QUICK CORNERS MASKING™

For masking corners inside and outside of the home. Pre-cut at a perfect 90° angle, means no more fiddling with masking tape in these often tight areas. Sellotape® Quick Corners are manufactured with high quality components and feature 3 layered construction, leaving no bleed through, no dripping and no baked on adhesive residue.

### QUICK CORNERS WINDOWS 7 DAY MASKING CORNER

- The easy and precise way to mask corners on windows.
  - U.V. Resistant Adhesive-even in direct sunlight.
- USES:** Windows-Indoor/outdoor, french doors, sliding glass doors, cabinet windows, mirrors and tiles.



### QUICK CORNERS DELICATE SURFACE

- The easy and precise way to mask corners inside the house.
- Removes cleanly from drywall and wallpaper.

**USES:** Corners where trim meets wall, inside corners, spindles and furniture.

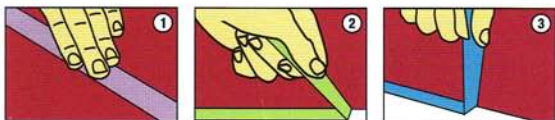
**QUICK CORNERS TAKES ALL THE HASSLE OUT OF MASKING CORNERS**

# MASKING TIPS

- Always read all information on the label (front & back) before using the product.
- Masking tapes should always be applied to clean, dry surfaces
- Masking tapes are pressure sensitive. (1) To avoid edge-bleed along the tape, press edges firmly with fingertips. This adheres the tape to the surface and prevents paint seeping underneath. For the best fine line clean edge use Resene PVC Finline (not ideal for all situations).

## REMOVAL

- All masking tapes should ideally be removed once the paint is dry.
- Remove tape at a steady moderate pace. Removing at speed may cause the tape to tear, and removing too slowly increase the risk of adhesive transfer.
- When removing masking tape, lift at 45° (2) pulling away from the painted surface as this will leave a cleaner edge. If the adhesive begins to transfer, remove the tape at a 90° angle (3)



## TEMPERATURE

- Always be aware of the temperature when masking, as differences in climate can affect the removal of the tape.

### Warm = 37°C

- Increased risk of adhesive transfer
- Removal of tape requires less effort

### Normal = 10°C - 37°C

- Clean removal

### Cool = 10°C

- Clean removal
- Extreme temperatures can cause tape to become brittle and tear
- Most masking tapes should not be used on poorly keyed surfaces, as the paint could lift when the tape is removed. For poorly keyed, delicate and sensitive surfaces use Resene Low Tack, which has been specially designed for use with these surfaces.
- Not all masking tapes are designed for long-term applications. If left in place for too long the adhesive on some tapes will dry up and go hard.
- To remove hardened tapes, soak with a solvent. (Or try oil of eucalyptus or citrus-based removal fluid). The longer the solvent soaks in the easier it is to remove. 5 to 10 minutes is usually enough. Then peel off or use a plastic scraper, razor blade or stiff-bristled brush to remove. (Test in an inconspicuous place beforehand)
- If the masking tape isn't dried on but still hard to remove, use a hair dryer to warm and soften the adhesive. After a while, peel the tape away.
- For long term applications use Resene Longlife or PVC Finline masking tape.



For further information on Resene or Sellotape® Masking Products contact us at:

Mail: P.O Box 2484, Auckland

Phone: 0508 SELLOTAPE (0508 735 568)

E-mail: [sellotape.info@henkel.com](mailto:sellotape.info@henkel.com)

Sellotape® and Quick Corners™ are trademarks.